

THE NEW ZEALAND



CRAFTSMAN

Annual Subscription, payable in Advance, 10/-. }

WELLINGTON, NEW ZEALAND, SEPTEMBER 1, 1924.

{ Published in Wellington on the first day of every month

H. W. LLOYD,

THE HOUSE FOR GREENSTONE.

Masonic Aprons and Jewels.
Silver and E.P. Presentation Goods.

WATCHMAKER AND JEWELLER,
282 Lambton Quay and 114 Cuba Street, Wellington



A "KODAK" NEVER FORGETS!

You can treasure up your good times and live over again if you take a Kodak with you. Every Kodak has the Autographic feature for noting the who, when, and where of every happy picture.

Kodak Juniors from 55/-.
Other Kodaks from 42/6.
Brownies from 11/9.

Latest Price List Free of All Kodak Dealers.
And KODAK (Australasia) PTY., LTD.,
G.P.O. BOX 1474, Wellington;
Also at Auckland, Christchurch, and Dunedin.

THE BE PREPARED!

"M&G" Consult the Mercantile and General Insurance Co., Ltd.
FIRE :: MARINE :: ACCIDENT
FRANK HURLEY, General Manager.
SUPPORT YOUR OWN LOCAL COMPANY!

NASH

*The Car You Never Tire of
and which Never Tires You.*

"NASH LEADS THE WORLD IN MOTOR VALUE."

Telegrams: "Archwilson." Telephone 21-949

A. M. WILSON & CO.

Builders and Contractors
Funeral Furnishers

268 Willis Street, Wellington

ARCH. McL. WILSON, Building Valuer.

STAR HOTEL

TAURANGA

THE LEADING COMMERCIAL HOUSE
IN THE BAY OF PLENTY

P.O. Box No. 21

Telephone No. 6

A. BROWN Proprietor

MASONIC MEETINGS IN SEPTEMBER, 1924.

AUCKLAND.

MONDAY, 1st.
Te Marama
Ara. 348, I.C.
TUESDAY, 2nd
Abercorn
Tawhiri
WEDNESDAY, 3rd
Nau Mai
Manakau
MONDAY, 8th
Beta-Waikato
Papakura
Whangarei
Morningside
TUESDAY, 9th
Franklin
Hobson
*Titirangi
Maniapoto
WEDNESDAY, 10th
Ara (1)
Coromandel
Mangonui
Ohinemuri
Taupiri
Piako
Plunket
Waikareki
Tiran
THURSDAY, 11th
Albion
Te Aroha
Marsden
Manurewa
Calliope
FRIDAY, 12th
Hokianga
Hikurangi
Karioi
Whakatane
Ohura
Ruawai
Waipatu
MONDAY, 15th
Wairoa
Waihi
St. James
Arapohue
TUESDAY, 16th
St. Andrew
Sir Walter Scott
United Waiuku
Rotorua
Waipu
Taneatua
WEDNESDAY, 17th
Alpha
Waipa
Tauranga
THURSDAY, 18th
Maungahao
*Pono
Papatoetoe
TUESDAY, 23rd
Auckland
Gisborne
WEDNESDAY, 24th
United Service
Te Puke
THURSDAY, 25th
United Masters
MONDAY, 29th
Onewa
TUESDAY, 30th
Ponsonby

HAWKES BAY.

TUESDAY, 2nd
Victoria
WEDNESDAY, 3rd
Bedford
TUESDAY, 9th
Heretaunga
Ruahine
Waikaremoana
WEDNESDAY, 10th
Puketoi
Omarunui
MONDAY, 15th
Abercorn
Lion
TUESDAY, 16th
Scinde
THURSDAY, 18th
Rawhiti
FRIDAY, 26th
Ruatanuiwha

TARANAKI.

TUESDAY, 2nd
Hawera
WEDNESDAY, 10th
Patea Kil.

TARANAKI—Contd.

THURSDAY, 11th
Whangamomona
FRIDAY, 12th
Moa
TUESDAY, 16th
St. John's
Ikaroa
WEDNESDAY, 17th
Stratford
THURSDAY, 18th
Taranaki
MONDAY, 22nd
Kaponga
WEDNESDAY, 24th
*Ngamotu

RUAPEHU.

THURSDAY, 4th
Huia
MONDAY, 8th
Feilding
Manga-te-Weka
TUESDAY, 9th
Rangitikei
Te Awahou
Otaihape
WEDNESDAY, 10th
Otangaki
Rongotea
THURSDAY, 11th
Manawatu Kil.
St. Andrew Kil.
Kimbolton
Ruapehu
FRIDAY, 12th
Rangitikei
MONDAY, 15th
Waimarino
TUESDAY, 16th
Ngauruhoe
Orona
MONDAY, 22nd
Whataru
THURSDAY, 25th
Moutoa
SATURDAY, 27th
Awatea

WELLINGTON.

MONDAY, 1st
Leinster
Waitangi
TUESDAY, 2nd
Island Bay
WEDNESDAY, 3rd
Brooklyn
Waihenga
Ruakawa
THURSDAY, 4th
Tutanekai
Russell
SATURDAY, 6th
Taia
MONDAY, 8th
*Waterloo
St. John
TUESDAY, 9th
St. Mark
Otari
Empire
Jellicoe
WEDNESDAY, 10th
Masterton
*Horowhenua
Waiwhetu
THURSDAY, 11th
Taratua
Hinemoa
FRIDAY, 15th
Eketahuna
SATURDAY, 13th
Coconation
Whetu Kairangi
MONDAY, 15th
St. Andrew
Mangahao
TUESDAY, 16th
Tawera O Kapiti
Otaki
WEDNESDAY, 17th
Ulster
Wellington E.C.
THURSDAY, 18th
Trentham
MONDAY, 22nd
N.Z. Pacific
TUESDAY, 23rd
Greytown
Mokoia
WEDNESDAY, 24th
Eastbourne
Wairarapa

WELLINGTON—Contd.

THURSDAY, 25th
Renown
SATURDAY, 27th
Karori

MARLBOROUGH AND NELSON.

TUESDAY, 9th
Unanimity
WEDNESDAY, 10th
Motueka
THURSDAY, 11th
Victory
SATURDAY, 13th
St. Cuthbert's
WEDNESDAY, 17th
Forest
FRIDAY, 19th
Havelock
TUESDAY, 23rd
Wairau
Southern Star, E.C.
FRIDAY, 26th
Waihoi

WESTLAND.

WEDNESDAY, 3rd
Aorangi
THURSDAY, 4th
Advance
SATURDAY, 6th
Mokihinui
MONDAY, 8th
Kawairi-Westport
TUESDAY, 9th
Greymouth, E.C.
WEDNESDAY, 10th
Westland Kil.
Runanga
THURSDAY, 11th
Mawhera
TUESDAY, 16th
Kumara
Waco
Pacific, E.C.
WEDNESDAY, 17th
Coanought
THURSDAY, 18th
Robert Burns
SATURDAY, 20th
Torea

CANTERBURY.

MONDAY, 1st
Caledonian
TUESDAY, 2nd
Unanimity
Lincoln
Civic
Tawera
WEDNESDAY, 3rd
Rakai
THURSDAY, 4th
Southern Cross
Crown
*Avon
TUESDAY, 9th
St. Augustine (4)
Progress
Shirley
WEDNESDAY, 10th
St. George
Methven
St. Augustine (99)
Brighton
*United Forces
THURSDAY, 11th
Ashley
Kaikoura
Mackenzie
Cheviot
Wihora
Erewhon
Coopers, E.C.
FRIDAY, 12th
*Phoenix
Amuri
MONDAY, 15th
Timaru
Acacia
*Summer
TUESDAY, 16th
Parera
Robert Burns
WEDNESDAY, 17th
Thistle
Gerddine
THURSDAY, 18th
Canterbury Kil.
Malvern
Canterbury, E.C.
FRIDAY, 19th
Mairaki

CANTERBURY—Contd.

TUESDAY, 23rd
Christchurch
Koranga
WEDNESDAY, 24th
Concord
THURSDAY, 25th
St. Martin
Aherewa
Lome

OTAGO.

MONDAY, 1st
Maori
WEDNESDAY, 3rd
St. Clair
THURSDAY, 4th
Otago Kil.
MONDAY, 8th
*Clutha
Ngapara
Ionic
Strath-Taieri
Karitane
TUESDAY, 9th
Tabarangi
WEDNESDAY, 10th
Otago
Waitaki
Hereules
Cromwell Kil.

OTAGO—Contd.

THURSDAY, 11th
St. John
St. Bathian's
*Kurov
Clinton
The Service
FRIDAY, 12th
Palmerston
Manherikia Kil.
SATURDAY, 13th
Teviot
MONDAY, 15th
Haeremai
TUESDAY, 16th
Durstan
Owaka
*Waverley
WEDNESDAY, 17th
Oamaru Kil.
Mount Ida
Oceanic
MONDAY, 22nd
Koputai
TUESDAY, 23rd
Hiram
WEDNESDAY, 24th
St. Thomas Kil.

*** Installation Meetings.**

Secretaries are asked to notify the Manager of any errors in the above table and forward correct dates of future meetings.

£7/7/- and £8/8/- for Real Tailor-made Suits

Special offer of Long-looked-for Popular Prices.

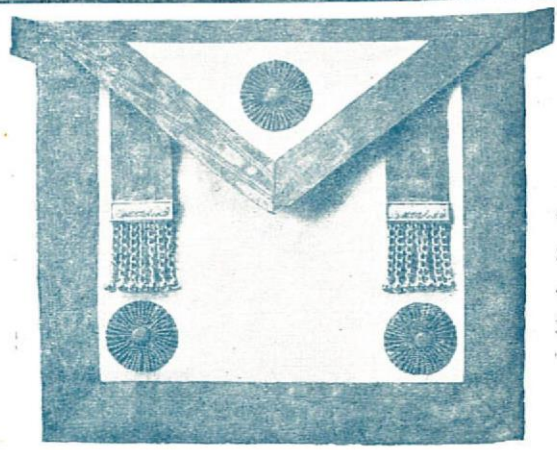
Having bought to advantage a large shipment of Woollens, we are in a position to offer them at a very reasonable price.

This means a REDUCTION of 2 Guineas in Tailor-made Suits. Best English Blue Serge, Worsteds, and Tweed Suits, Guaranteed Genuine Tailor-made, now

£7/7/- and £8/8/-.

Call and inspect our splendid selection of Suitings.

JAMES BELL Ltd. 61 Manners Street



Masonic Regalia

We specialise in the manufacture of Masonic Regalia of every description.

Presentation Jewels made to order. Highest craftsmanship at the most moderate prices.

Write or Call for our Illustrated Masonic Catalogue.

WISEMAN'S 170-172 QUEEN STREET AUCKLAND

The New Zealand Craftsman

VOL. XXX., No. 4.]

WELLINGTON, NEW ZEALAND, SEPTEMBER 1, 1924.

[A.D. 1924: A.L. 5924.

WITHOUT DETRIMENT.

—◇—

"No man ought to be allowed to enter the Order
"unless he is equal to its demands, financially as
"well as mentally and morally, able to pay its fees
"and dues, and to do his part in its work and relief."
"Yet no set of men," however intelligent
"and strong, are exempt from the vicissitudes and
"tragedies of life."—" South-western Freemason,"
Los Angeles, California.

"WITH these sentiments we cordially agree, especially in view of the fact that in our day and generation a strong impression appears to exist amongst outsiders that when a man succeeds in becoming a Freemason he has indirectly effected an insurance against death or a breakdown in the health of the family bread-winner. We may write and talk as much as we please about such an erroneous assumption, and loudly declaim that Freemasonry is not a benefit society, but the idea is one that is not easily dispelled. There is some sound reason for its existence, too, because the charity of the Craft is well known, notwithstanding that it is administered without any ostentation. The relief afforded to those in distress cannot be hidden in small communities, if for no other reason than the natural one, that the beneficiaries themselves are prone to give wide expression to their feeling of gratitude. Admission to Freemasonry, however, presupposes an ability on the part of each candidate to participate as a helper in the scheme, not as a "leaner." Financially the power to help others may be small, but it is the principle, not the individual contribution, that sanctifies the giving. We need hardly say that we are very far from asserting that membership should be restricted to the well-to-do; still we have no hesitation in affirming that it should not be open to those who have made no reasonable effort to provide for their own future, or for those who are dependent upon them. If the circumstances connected with some of the appeals that come before Lodges are frankly and honestly reviewed, it must be recognised that in many cases the question of whether the candidates were in a position to meet the necessary charges without detriment to themselves or their connections was overlooked. The obvious conclusion is that the adoption of active measures is necessary to ensure that no candidate be permitted to deprive himself or his dependents of any of the comforts they should have. It is difficult, perhaps, to speak the truth without giving offence, but it is patent that in many instances the fees accepted by the Lodges should have been devoted to life insurance, or to membership in a friendly society. Even if the applicants were actuated by noble motives, their ambition was an extravagance that should not have been countenanced, and it was not altogether honest in the circumstances to have permitted the sacrifice. The position is not without its difficulties, because, apart from the test of character and moral worth, no hard and fast line can be drawn, and all attempts to do so are met with the argument that they are not strictly in accord with the ideas, traditions, and customs of Freemasons, who "neither in their hearts nor outwards eyes, envy the great, nor do the "low despise." In some of the centres where strong Boards of Enquiry have been established particular attention is paid to the circumstances of applicants, but it is rarely that a candidate is rejected on that account; nevertheless the knowledge that such enquiries are made acts as a useful check. The danger of admitting those who are influenced by personal interest may be minimised, but it will never be wholly eliminated in a commercial age when so many men, as a matter of business, take all they can get from their fellows and give as little as they can. There is, however, excellent traditional authority for the rejection of those who are unable to properly appreciate their cares and responsibilities, or whose habits and modes of thought and thriftlessness disclose a selfish disregard for the interests of those dependent upon them. They may be good enough fellows in every other respect, but such are never likely to become useful members of an institution the members of which are drawn together under a common and unselfish impulse to help others, to feed the hungry, clothe the naked, and bind up the wounds of the afflicted. The obligation, however, is to give, and do, and carries with it no personal right to relief, prospective or otherwise. Surely there can be no objection to requiring every candidate to adduce proof before he is accepted that the step he proposes is one that can be

taken without the slightest detriment to himself or others and that he has made adequate provision against his own sickness or death. To this no prudent man of moral worth could take exception, and young men in particular should be advised by those they approach that such proof is absolutely necessary. No Lodge can afford to lay itself open to the suggestion that it has accepted fees from those who are unable to afford the luxury of assisting others, and who have not made reasonable provision for their own needs. There is reason to believe that some Lodges are not sufficiently careful in this respect, and that their loose and superficial methods call for thoughtful attention and possibly legislation in the near future.

THE EMBRYO CANDIDATE.



The official report of the proceedings at the last annual assembly of R.A. Masons of the territory discloses an interesting and, one might judge, vigorous discussion having reference to the status of a candidate for admission to Capitular Masonry. The Executive, whose responsibilities are analogous to those assumed by the B. of G.P. in Craft Masonry, submitted for adoption a rule explicitly declaring against the exaltation in one Chapter of a candidate previously balloted for and accepted in another. In the ordinary course one may assume that proposals having relation to points of jurisdiction and procedure, formulated by an Executive entrusted with the duty of supervising the administration and government of a particular branch of the fraternity, have previously received adequate consideration by persons acquainted with the details of the subject, and in this instance the argument that ensued justified such an assumption. In supporting the rule it was contended that in the case of an aspirant for R.A. membership the ceremony of exaltation constituted the factum of admission, and that no chapter other than that which had received the petition and pronounced favourably thereon through the medium of the ballot was competent, or should be permitted, to confer the degree of the R.A. whatever change of circumstances affecting residence or otherwise might have arisen. Obviously the point of view here taken was one dealing primarily with considerations of principle, to say nothing of difficulties in practice and routine that might thereby be avoided. The opposition proved numerically stronger, and the adoption of the explicit rule, designed rather in the nature of a declaratory provision, was frustrated, although the pre-existing law remains unchanged. Curiously enough, in a territory far removed from this, a contributor to an American contemporary, Bro. Melvin M. Johnson, P.G.M. of Massachusetts, covered similar ground in a reasoned and thoughtful article dealing, inter alia, with the status, rights, and obligations of a candidate for Symbolic Masonry, from the reception of his petition to its final consummation. He puts it that

"a candidate, by petitioning, submits himself to the Masonic laws of the jurisdiction, and has irrevocably given to that Lodge the right to accept or reject his application. Until that particular Lodge has either declined to do or has actually done what he has requested, no other Lodge in the world may deal with him. If the Lodge accepts his application by electing the applicant, the situation is analogous to what the law calls a contract. By that election the Lodge has bound the Fraternity to give him the degrees, subject to and in accordance with its customs and laws. Until this agreement has been carried out (or terminated in accordance with law—as, for instance, on objection duly sustained) no other Lodge in the world may deal with this unfinished material."

As the considerations thus advanced manifestly apply equally to a candidate for admission into the R.A. as to one seeking initiation into a Lodge, the exponents of the suggested law, which, as stated above, was rejected, find themselves in good company. Some of the arguments tendered ad contra would indicate that regard for principle and tradition was the last thing to consider. Members were wanted, it was asserted, and the proposal did not assist in that direction. The rejoinder might with force be made that that jurisdiction, be it a G.L., G. Chapter, or what may be, which jealously regards tradition, precedent, and custom, more worthily fulfils its function and furthers the cause of the Craft than would be the case if it permitted such consideration to be subordinated to a desire to increase by any means the roll of its membership. It has been well said that Freemasonry is a law unto itself. Drummond said, "The natural tendency to mould Masonry according to modern ideas, rather than to abide by the old laws and the ancient usages of the Craft, is the greatest danger to the prosperity and perpetuity of the institution." Tradition is everything in Masonry, and the authority which in season and out of season insists upon it, in preference to regard for expediency, is more surely assisting to preserve its perpetuity. Freemasonry, as we now know it, is essentially a democratic institution, whose forum or parliament, changing as it does in personnel from year to year, is susceptible to the influence of caprice and sentiment notwithstanding that questions of more or less moment may be involved in the issues before it. The need is so much the more obvious for leaders versed in the philosophy and history of the Craft, able and willing by logical argument and suasion to point the way.

Lodge Roof of the World, No. 109, A.F. and A.M., is located at Cerro de Pasco, Peru. This Lodge is at an altitude of 14,208 feet above sea-level, and is said to be the highest Masonic body in the world. In order to beat their own record, however, its members recently climbed to the top of a neighbouring mountain and held Lodge sessions at an altitude of 15,575 feet. A brother received his Masonic degrees at that altitude and can certainly be said to have received high degrees.

News and Notes

The additional Lodge for Napier, the petition for which was considered by the B. of G.P. recently, will be known as "Lodge Napier, No. 266." The consecration will take place on Wednesday, the 17th September, when the Pro-G.M. will officiate.

Lodge Waimea, No. 268, at Nelson, will be consecrated by the Pro-G.M. on Saturday, the 27th September. A petition has been received by the B. of G.P. for the erection of a Lodge at Cashmere Hills, Christchurch, and has been recommended to the favourable consideration of the G.M.

A petition has been prepared for the formation of an additional Lodge at Hastings, Hawkes Bay, and the opening will probably take place in September.

The meetings held in Christchurch during the visit of the 1st G.P. of R.A. Masons were of a very enthusiastic nature. The consecration of the Crown Chapter and the meeting on the following evening of the combined Chapters were both most successful functions, and the impressions created by the M.E.G.Z. were very favourable.

The meeting of the G.M. with the North Canterbury brethren at Rangiora on the 13th August was a very happy function. There was a crowded attendance, and the chair was occupied by W. Bro. Rowe (W.M., Lodge Ashley).

The G.M. was to meet the Napier brethren on the evening of Monday, 25th August.

His Excellency Lord Jellicoe proposes visiting Taranaki during September, and is to meet the local brethren at New Plymouth on the 15th of that month.

The B. of G.P. has decided to ask G.L. to extend recognition to the G.L. of Panama.

The Prov.G.M. of Otago has advised the B. of G.P. that there is a probability of the formation of a Lodge at Pembroke, Lake Wanaka.

Lodge Arawhaiti, No. 267, Remuera, Auckland, was opened by the Prov.G.M. of Auckland (M.W. Bro. Oliver Nicholson) on the 31st July. This Lodge is an offshoot from Lodge Ara, No. 1, some thirty-six members of that Lodge having signed the petition for the erection of the new body.

M.W. Bro. J. J. Dougall, P.G.M., has returned from Sydney, where he went to represent the G.L. of New Zealand at the installation of the G.M. of New South Wales. He describes the ceremony as a brilliant one, and the hospitality as being on a very high scale.

Lodge Matamata, No. 265, was consecrated by the Prov. G.M. of Auckland on Tuesday, 12th August. The brethren had erected their own hall in which the proceedings took place.

The Constitution of Lodge Camaro, No. 260, had to be deferred owing to illness of the W.M. designate, and has now been arranged, and will be conducted by the Pro-G.M. on Wednesday, 3rd September.

A charter has been granted for the new Lodge at Whangarei, which will be designated as Lodge Parahaki, No. 269.

The G.M. has granted a warrant for the new Lodge proposed to be established in Reinuera, Auckland. It will be known as "Lodge Orakei, No. 270."

A meeting of the brethren interested in the formation of another Lodge in the Southern part of Christchurch was held last month, and a petition is now in the course of circulation. The Acting-Sec. is W. Bro. Chas. Johnson.



Mr. P. N. Denton, late of Littlejohn's, wishes to announce to his friends and to the general Public that he has purchased Geo. T. White's well known Jewellery business at 274 Lambton Quay, Wellington, and solicits a share of your esteemed patronage.

ALL STYLES OF
Masonic Jewels
IN SILVER, GOLD
AND ENAMELS
PROMPTLY MADE TO ORDER.
P. N. DENTON
274 Lambton Quay, Wellington

There are quite a large number of brethren resident in the Maheno, Kakanui, and Otopopo districts who are members of the Oamaru Lodges, and a strong desire is being expressed for the formation of a Lodge for their convenience, probably at Maheno.

The G.L. of Massachusetts is the only one in the United States that permits plural membership.

In Ireland in 1753 there were only thirty-seven Lodges, all in Dublin and the south and west, with the exception of one Lodge in Fermanagh. In 1923 there were 607 Lodges on the Irish G.L. register. Antrim had 173, Down 134, Derry and Donegal 40, Tyrone and Fermanagh 31, and Armagh 28. There were forty-eight Lodges abroad, and seven military Lodges. Dublin had sixty-nine Lodges and Belfast 108. During 1923 warrants were issued for twenty-five new Lodges—all located in Ulster.

The Robert Burns Lodge (Christchurch) struck out on a new line in its installation programme this year, giving a sketch history of the Lodge in addition to the ordinary programme. That this innovation was appreciated was shown by the great rush there was for programmes. The sketch history fills eight pages, and should be useful when the Lodge celebrates its jubilee in about two years' time.

SOUTHLAND NOTES.

R.E. Comp. Wm. Irving, G.Supt. of Southland, paid an official visit to Wallace Chapter on 24th July. He was accompanied by V.E. Comp. Robt. Winning (1st Prin.) and E. Comp. Sydney Smith (Scribe N., Southern Cross LA. Chapter, No. 3).

W. Bros. Chas. Wilson and H. T. Connor have both suffered severe relapses. W. Bro. Wilson is at present still confined to his home. W. Bro. Connor is in Southland Hospital undergoing special treatment. Bros. J. McDonald and Thos. O'Connell (Lodge Waihopai) have both made good progress towards recovery.

The musical items by the Masonic orchestra and Bros. Hinton, Kummert, and McDonald were of a particularly high standard, and assisted the success of the Victoria installation.

The annual dance social held by Lodge St. John, No. 94, on 25th July in the Forth Street Hall was indeed a brilliant function. The temple was well packed by members of the Lodge and lady friends. W. Bro. Geo. Curie presided and received a large number of visiting brethren. After a short address of welcome by the W.M. a sacred solo was sung by Bro. Kummert, followed by two verses of "Lead, Kindly Light," sung by the whole assembly. The company then retired to the refectory, which was indeed a picture, as the result of extensive decorations carried out by Bro. Robt. McKillop and his assistants. Dancing was indulged in until the small hours of the morning. Good music, a well prepared floor, and an excellent supper helped to make the evening the success it was in spite of the great crowd present. Bro. Pedlar, S.W., acted as M.C., and Bro. Lange had charge of the music.

The installation of Huiroa R.A. Chapter was held on 5th August, and attracted a good attendance of members, also a good following from Southern Cross Chapter, No. 3.

The erection of Lodge Southland is now well under way, and will probably be consecrated in the month of October.

W. Bro. Brokenshire has retired from the position of Sec. of Lodge Victoria, No. 147, after ten years' service.

A splendid gathering assembled on 12th August to do honour to W. Bro. W. Fraser, who was installed W.M. of Lodge Victoria, No. 147, for a second term. The installation was ably conducted by R.W. Bro. W. A. Stout, Prov. G.M., and P.Prov.G.Ms.

The installation of Southern Cross R.A. Chapter, No. 3, will be held on 11th September, when E. Comp. Arthur Scott' will be installed as 1st. Prin.

Lodge Celtic will pay their annual visit to Lodge Southern Cross, No. 9, on 10th September.

The junior members of Lodge Southern Cross, No. 9, were entertained by the members of the Junior Lodge of Instruction under Lodge Waihopai, No. 189, on 25th August.

The members of Lodge Waihopai propose to hold their annual social and dance early in September.

The regular meeting of Murihiku Rose Croix Chapter, No. 36, S.C., will be held on 29th September.

The brethren of Lodge Harvey entertained their lady friends at a recent meeting.

Lodge Switzers will hold their annual meeting on 3rd September. The brethren of Lodge Aparima were called to labour for installation purposes on 26th August.

The speeches at the after meeting of the Huiroa KA. Chapter installation were excellent, and augur well for the coining year.

V.E. Comp. W. R. Winning (1st Prin., Southern Cross R.A. Chapter) was unable to be present at the last convocation owing to illness.

OTAGO COMMENTS.

W. Bro. Gallop (Lodge Waverley, No. 226) has earned congratulations upon his Lodge's visit to Roxburgh—some twenty-one strong—to work the First Degree in Lodge Teviot, No. 148.

The ceremonial working and the splendid reception afterwards were happy complements to a successful function.

Other fraternal visits include those of Lodge Clutha, No. 14, to Lodge St. Thomas Kil., No. 83, Kaitangata; Lodge Ngapara, No. 68, to Lodge Kurow.

Social gatherings were most enjoyable and successfully carried out by Lodge Hercules No. 36, Cromwell Kil., No. 83, while the annual ball of Lodge Karitane, No. 221, was a very happy reunion.

In the prime of early life, and after a long illness, Bro. A. E. Borrow has been called to the G.L. above, and has left Dunedin Freemasonry much the poorer. Of genial and happy disposition, he gave freely of his high musical ability to all and sundry. Lodges throughout the district all owe him a debt of deep gratitude, and join in extending sincere sympathy to his parents and relatives.

Dunedin brethren were pleased to see Rev. Bro. Col. Barclay, G.Sec., during a recent visit, and to note that he is as keen and as alert as ever.

Bro. Lischner, Prov.G.M., accompanied Lodge Waverley to Roxburgh, and has since conducted the installation ceremony of Lodge Palmerston, No. 46.

THE BEST in Pure Drugs, Photo Goods, Toilet and Surgical Requisites

are always the cheapest. You can obtain them at McKinney's Pharmacies from a well selected stock at

HERNE BAY, GREY LYNN, POINT CHEVALIER, and MOUNT ALBERT.

Phone 2951.

Phone 4200 (4 rings)

Prescriptions our Specialty.

W. H. McKINNEY, M.P.S.

CHEMIST AND DRUGGIST

MARLBOROUGH NOTES.

The Unanimity installation meeting—largely attended by members from all parts of Marlborough and Nelson—left a very good impression. It was a record in every respect, and the newly-installed W.M., W. Bro. A. M. Thomson, received a happy introduction to the chair. Brethren were enthusiastic over the comfort and attractiveness of the refectory at the new Masonic Temple, and as the Temple itself will be on a somewhat larger scale there will be so much additional comfort that attendances at meetings should not be affected by any shortcomings in appointments.

Opportunity was taken by W. Bro. W. J. Girling during the banquet to enter a strong plea for brethren to support the Temple by taking up shares. He stated that many more shares would have to be subscribed before the cost of the new building was in sight, and he looked to the Blenheim brethren to rise to the occasion. There was a satisfactory response, about 115 shares being taken up in the room.

By the way, W. Bro. Girling came over from Wellington to attend the Unanimity installation, and during his temporary absence he received the glad tidings that a son had been born. Brethren rejoice in his good fortune.

W. Bro. A. C. Nathan was the recipient of a P.M.'s jewel from the brethren as a memento of his year in the chair, and also in recognition of his services to the Lodge. The presentation was made by R.W. Bro. Furness. Bro. J. 1-1. Foster received a certificate of life honorary membership in recognition of long and faithful service as Tyler.

The installation meeting of the Marlborough Rose Croix Chapter will take place on Monday, September 22, and that of the Marlborough R.A. Chapter on the following evening. On the Tuesday morning the Wellington Preceptory will meet in Blenheim for the purpose of conferring a number of degrees, and in the afternoon the Chair degrees of the R.A.C. will be conferred. R.E. Comp. Martin and his party are helping themselves to a very busy week, because the programme will be repeated in Nelson on 24th and 25th September.

There is every likelihood of a large attendance of Marlborough brethren at the consecration of Lodge Waimea in Nelson on Saturday, 27th September. The ceremony will be conducted by the Pro.G.M., M.W. Bro. H. L. Michel, and R. W. Bro. R. P. Furness, Prov.G.M., will instal the Bishop of Nelson as the first W.M.

GRAND LODGE NOTES.

IRREGULAR MASONIC LODGES.

It was brought to the notice of the B. of G.P. that a spurious and clandestine Masonic organisation known as "Co-Masonry," which has been at work in the Homeland for some time, was now setting up Lodges in this Dominion. This body professes to work the Three Degrees of Antient Craft Masonry, to admit women, confer signs and secrets said to be Masonic, and endeavours in different ways to copy the practices of Freemasonry. It was further reported that attempts had been made to induce Freemasons to attend the meetings of the body referred to.

The Board considered it necessary to issue instructions warning brethren that if they attended any of these

GEORGE JEFFERY, "The Pen Doctor"
218 LAMBTON QUAY, WELLINGTON.

The three best Pens in the world are—
SWAN, Self-filler—25/- ONOTO, Self-filler, 20/-
WATERMAN, Self-filler—25/-

I understand them, I know them, I sell them, I recommend
them, and I repair them.

Lodges they would be violating their obligation and would render themselves liable to Masonic discipline. It was also deemed advisable to emphasise the necessity of the exercise of great caution in admitting strangers to our Lodges, and that the production of a G.L. Certificate should, in every instance, be demanded.

BOOKS, ETC., FOR GRAND LODGE.

The Board has pleasure in reporting that the late M.W. Bro. C. J. W. Griffiths, P.G.M., made a bequest to G.L. of a considerable number of Masonic books and some valuable Masonic manuscripts. Occasion has been taken to convey to the relatives of our late respected brother an expression of the Board's appreciation of this handsome addition to G.L. Library.

R.A. NOTES.

On Thursday, 31st July, the two Christchurch Chapters (St. Augustine and Prince of Wales) and the Lyttelton Chapter (Albert Edward) held a combined meeting to meet the 1st G.Prin., M.E. Comp. Colonel S. S. Allen. The R.A. Degree was worked, the officers being:—V.E. Comps. R. W. S. Eastwood (St. Augustine), Z.; R. Hyman (Prince of Wales), H.; C. J. Johnson (Albert Edward), J.; T. Hatton (Albert Edward), D.E.; and J. A. Stables (St. Augustine), S.N.; E. Comps. D. Round (St. Augustine), 1st Soj.; J. Angus (Albert Edward), 2nd

Soj.; V.E. Comps. J. DuFou (Prince of Wales), B. of. C.; Roberts (Prince of Wales), 3rd Soj.. Each of the Prins. was the 1st Prin. of his Chapter, and the three Sojs. the 1st Sojs. of their Chapters. After the R.E. G.Supt. had been received R.E. Comp. Bolani, (G.Supt., E.C., South Island) and R.E. Comp. Cousins (Dep. Prov.H., S.C.) were admitted, then followed M.E. 1st G.Prin. with his officers, among whom were M.E. Comp. C. Flavell, P.G.Z., and R.E. Comp. G. Russell, Dep.G.Z. The ceremony was excellently carried out, the slight differences in ritual being hardly distinguishable. The V.E.Z. was assisted in the work by the officers above mentioned and M.E. Comp. C. Flavell, V.E. Comps. Col. G. Barclay, and J. Gillanders.

In the refectory there was a gathering of about 100, among them a number of companions from Ashburton, and after the loyal toast had been received V.E. Comp. R. W. S. Eastwood proposed the health of Colonel S. S. Allen, 1st G.Prin. He referred to the very fine work Col. Allen had done for his country and the Empire in the late war, and that on his return he had retained his energy and devoted much of it to Masonry. Honours both military and Masonic had been showered upon him, and he had shown by his work in both spheres that they were well earned. He thanked the 1st G.Prin. for his courtesy in remaining in Christchurch to visit them. In his reply M.E. Comp. Col. Allen said he had entered heartily into the work of his office, and, although a busy man, had found time to attend five consecrations of new Chapters since February last. He had made up his mind when he accepted his office that he would at least attend all consecrations, and up till the present had done so. He hoped the Christchurch Chapters would go on and prosper. He referred to the excellence of the work, some points of which specially commended themselves to him, but there were others with which he did not exactly concur. Other toasts were proposed and duly honoured.

HIGHER DEGREES.

The Otakou Conclave of the Order of the Secret Monitor was opened in Dunedin during July, and has started on what is hoped will be a successful career.

The half-yearly muster of the Dist.G. Priory of New Zealand (Order of the Temple) took place at Christchurch on the 28th July in the presence of a good assemblage of members of the Order.

The new Conclave Secret Monitors proposed for Christchurch will be opened in the course of a week or so.

A Preceptory of the Order of the Temple is contemplated for Nelson, and will probably be opened during September.

Chips from many Ashlars

(With as many acknowledgments.)

No man who does not respect every other man in all that is his can be a good Mason. No sort of imposition or any that can make a human being innocently suffer in his property, his person, or his pride, can be done without violating the letter and spirit of Masonry.

There is an idea abroad among moral people that they should make their neighbours good. One person I have to make good: myself. But my duty to my neighbour is much more nearly expressed by saying that I have to make him happy, if I may.—R. L. Stevenson.

Every element of ignorance is anti-Masonic. The bigotry that breathes intolerance—the pride that makes distinctions—the tyranny that is cruel, and oppresses the poor—the arrogance that inaugurates its own monopolies—and the selfishness that plants itself within the narrow confines of sectarianism—as well as the devilish nature that lives and dies ignorant of humanity and charity, are all anti-Masonic. The craft cannot recognise them in any shape or form, and if any of them ever show their heads in a Lodgeroom the spirit of Masonry vanishes like ember fires before the destructive avalanche. No, the very first element of Masonry is light, and he that will comprehend it and enjoy its beauties must become a Masonic thinker.—"Scottish Rite Bulletin."

Out of the 549 Lodges in the State of Iowa there were 124 that were not represented at the last G.L. meeting. If this should happen in the State of Michigan we fear that 124 charters would be lifted and the number of Lodges in the State decreased to 425. The absent Lodges would certainly have to have a very good excuse for their negligence.—"American Tyler-Keystone."

Masonry allows its adepts perfect liberty to follow whatever religion they like, as long as they allow each one of their brethren peacefully to enjoy the same freedom. It would have him good and charitable, sincere and discreet, indulgent and modest, equitable and just, sober and honest. The Mason must make no distinction among men, whatever be the colour of their face, the latitude of their country, their social condition, their religious beliefs or their political opinions, as long as they are men of virtue.—Clavel, famous European authority.

The duty of a Mason is to endeavour to make man think better of his neighbour; to bring together those who are severed and estranged; to keep friends from becoming foes; and to persuade enemies to become friends. To accomplish this he must master his own passions and keep his own poise.

Masonry teaches its votaries to be true and to be honest in their dealings, though financial losses should result; to be charitable and unselfish; to judge justly and impartially; to be tolerant and avoid intolerance and persecution; to do that which is right whatever be the cost and to wrong no man of anything which is his.

WORK.

I am the foundation of all business. I am the fount of all prosperity. I am the parent of genius. I have laid the foundation of every fortune in America, from Rockefeller's down. I must be loved before I can bestow my greatest blessings and achieve my greatest ends. Loved, I make life sweet and purposeful and fruitful. I can do more to advance a youth than his own parents, be they ever so rich. Fools hate me; wise men love me. I am represented in every loaf of bread that comes from the oven, in every train that crosses the continent, in every newspaper that comes from the press. I am the mother of democracy. All progress springs from me. Who am I, What am I? I am Work.

Freemasonry, as it is organised to-day, is more of an aggregation of individuals than it is an arrangement of principles. There is too much consideration given to the individual and not enough to the outstanding force and importance of the fraternity. In speaking of Masonry we are too prone to discuss those who belong to it rather than the things for which the fraternity stands.

The G.L. of Cuba requires that each applicant for membership must submit two photographs with his petition for membership. One to be attached to the petition and exhibited in the ante-room before the ballot is taken. The second photograph is to be attached to the diploma issued when the candidate becomes a M.M.

Many Masons feel that rejection for membership in a Masonic Lodge is a serious blot on a man's character, from which it will take him a long time to recover. In the first place, it should never become a matter of public property. It is nobody's business outside of Masonry who has applied and been rejected, and if we are true to our obligations and the laws of the order no outsider will ever know it. In the next place, we take ourselves too seriously. Not all good men are Masons—not all of them care to be. In fact, not all Masons are good men, and when this is the case it is not much of a reflection on a man to be rejected by those who have proved themselves really unfit. No—in itself, a rejection for membership in a Masonic Lodge need not worry any man.—"N.S.W. Freemason."

Conferring a Masonic degree is a serious matter. It is a ceremonial, so serious, indeed, that it may leave an impress upon the life of the candidate, not only during his natural lifetime, but may even affect his life beyond the grave. We are not half so crazy as we are given credit with being about perfect ritualism. It is to be desired, that is true. But until a brother can go on the floor and perform his part of the ceremonies gracefully, impressively, and with ease, he should never be permitted to take the W.M.'s part.— "Illinois Masonic Review."

There are those who have expressed the thought that Freemasonry is a luxury, basing their opinion chiefly upon the initiation fees and the dues. We also are inclined to feel that Freemasonry is a luxury, but not in the sense applied by those who give it a financial aspect. As a matter of fact, the luxury which those who enter the Masonic Order accord themselves is the luxury of doing good.—"Voice Review."

"Of all the tasks which are set before man in life, the education and management of his character is the most important. He can do much to modify, dispose, and regulate the circumstances of his life so as to diminish both his sufferings and temptations, and secure for himself the eternal conditions of a happy and upright life."

When the Lodge is closed you may enjoy yourselves with innocent mirth; but you are carefully to avoid excess. You are not to compel any brother to act contrary to his inclination, nor to give offence by word or deed, but enjoy a free and easy conversation. You are not to use or indulge any immoral or obscene discourse, but to support the dignity of your character.—Trestle Board.

According to Mackey, "The York Rite is the oldest of all rites." In its original form it does not exist anywhere in the world to-day. The nearest approach to the original would perhaps be the St. John's Lodges of Scotland, with the R.A. degree of the Scottish Chapter added thereto.

The word "chapter," to designate a capitular body, was first used in England on 29th April, 1768.

The G.L. of West Australia has decreed that non-Masons may not be presented at the festive board after the toast list has been commenced. This order precludes the engagement of women and non-Masonic contributors to the musical programme.

If anger is not restrained it is frequently more hurtful to us than the injury that provokes it.—Seneca,.

"Respect is often paid in proportion as it is claimed."

"If thou art rich, thou'rt poor;
For, like an ass whose back with ingots bows,
Thou bear'st thy heavy riches but a journey,
And death unloads thee."—Shakespeare.

"Isn't it strange that Princes and Kings
And Clowns that caper in sawdust rings,
And common folks like you and me,
Are Builders for Eternity!

"To each is given a bag of tools,
A shapeless mass and a book of rules.
And each must make, ere life be flown,
A stumbling-block or a stepping-stone."

Poetry.

" DAD."

—◇—
Dad never had much to say;
Jogged along in his quiet way,
Contentedly smoking his old dudeen
As he turned the soil in the golden sheen.

Used to say, as he slapped th' mare,
One horny hand in his tangled lair,
"Rest is joy when your work's well done,
So pitch in, son."

Sometimes he an' I'd not hitch;
Couldn't agree as to which was which,
Fought it out on the same old lines
As we grubbed an' hoed 'mong the runin' vines;
And his eyes would light with a gentle quiz,
And he'd say in that old soft way of his,
As he idly stroked his wrinkled chin,
"All right, son, you win."

Dad was never no hand to fuss;
Used to hurt him to hear us miss;
Kind o' settled in his old ways,
Born and raised in the good old days,
When a tattered coat hid a kindly heart,
An' the farm was home, not a toilin' mart,
An' a man was judged by his inward self;
Not his worldly pelf.

Seems like 'twas yesterday we sat
On the old back porch for a farewell chat
Ere I changed the farm and the simple life
For the city's roar an' bustle an' strife.
While I gravely talked of the city's charm
His eyes looked out o'er the fertile farm,
An' he said as he rubbed where the, hair wee thin,
" All right, son, you win."

'Member the night I trudged hack home,
Sinkin' deep in the fresh-turned loam,
Sick and sore for the dear old place,
Hungerin' most for a loved old face.
When I climbed the hilltop o'er
There stood dad in the kitchen door,
An' he says in a voice from deep within,
"Hello, son, come in."

One winter's day, the first of snow,
He went the way that we all must go;
An' his spirit soared to the realms above
On the wings of a simple-hearted love.
An' I know that when I cross the bar
I'll find him there by the gates ajar,
An' he'll say, as he idly strokes his chin,
"Hello, son, come in."
—"New England Craftsman."

Correspondence.

We welcome correspondence on Masonic subjects, but are not responsible for the views expressed. It must be clearly understood that all letters must be couched in courteous and proper language, otherwise they will be at once declined. The Editor distinctly reserves the right not to publish, or only publish part of, any letter he may consider inimical to the best interests of The Craftsman.

ANSWERS TO CORRESPONDENTS.

Enquirer.—When standing to order the P.S. should not be altered when p.... is offered.

FROM THE SUBLIME TO THE RIDICULOUS.

—◇—
(To the Editor.)

Dear Sir and Bro.,—May I suggest that the proceedings, during the social hour following an initiation, or raising, should be somewhat in keeping with what has taken place previously. It is, I have always understood, generally conceded that on such occasions anything like undue frivolity should be carefully avoided: no one, of course, objects to good music and pure humour, but then it should be carefully selected. A young friend of mine who was raised recently set me thinking when he remarked that the sudden change from the sublime to the ridiculous, when he passed from the Lodge to the supper room, came quite as a shock, or, as he expressed it, he felt as if he had gone from the cathedral to a cheap music hall. That an intelligent candidate should so express himself indicates that some greater discrimination is necessary, and that W.Ms. might well consider whether the serious lessons of the degrees should be nullified by a form of amusement which, although harmless enough on proper occasion, is most inappropriate at times such as those to which I have referred.—Yours fraternally, P.M.

TO W.MS. OF BACK-BLOCK LODGES.

—◇—
(To the Editor.)

Dear Sir and Bro.,—In the course of my duties I have visited some of the back-block Lodges, and was surprised and sorry to see a small attendance. The reason given was, "There is no work" (no degree work). All appeared to be anxious to get through the little business; yet the Lodge closed, and into what was called (erroneously) the "Fourth Degree." In the refectory the brethren were all kind and hospitable, but had no time for anything but song (some questionable), story, and the toast of "The Visitor" (or "Visitors," as the case might be). I felt the night was absolutely wasted. As a lover of Freemasonry and the Craft I would urge on looking to the East. When a young and totally inexperienced Freemason is rushed through the chairs, not for his merit or for the good of the Craft, but because he is a sociable young man, and because the brethren, being also inexperienced, think a social evening is the chief end of Freemasonry, have him installed into the chair of K.S. I would urge in these cases that an experienced brother of ability be asked to give a ten minutes' address on a Masonic subject. Read an extract from the "N.Z. Craftsman," as it is abundantly capable of teaching young Freemasons; or read, say, a section of one of the lectures on the degrees, such as that or those written by an old P.M., and published by A. Lewis, London. This would up-lift young men. All should read that grand article in the August number of the "Craftsman"—"Look Well to the East." A W.M. should be capable of teaching, or, if not, should ask the assistance of those in the Lodge who are capable. By inserting this letter in your most helpful paper I trust it will induce Freemasons to advance in Masonic knowledge.—Yours fraternally,

A LOVER OF THE CRAFT,

PRESENTATION.

—◇—
The Masonic fraternity in the Thames district is about to lose one of its most enthusiastic and highly respected members in the person of R.W. Bro. M. J. Harris, of Paeroa, who is leaving for Australia. For the last 25 years R.W. Bro. Harris, P.J.G.W., N.Z., has been a regular attendant at the three local Masonic Lodges, and has rendered them all great assistance. At the installation of Bro. T. J. Buehan (Lodge of Light) on 11th July, the opportunity was taken by the brethren of the three Constitutions to say farewell to R.W. Bro. Harris and make him a presentation.

W. Bro. Bongard (Lodge Sir Walter Scott) expressed to R.W. Bro. Harris the thanks of the brethren for the many services rendered to Masonry throughout this district, and the general regret at his departure. In doing so he requested R.W. Bro. Harris to accept an album containing photographs of the interior of the two Masonic Halls, the sitting W.Ms. and Secs., and some of the oldest P.Ms. of the three constitutions. The best wishes for a happy and prosperous future accompanied the present. V.W. Bro. G. Cullen (Lodge of Light,

I.C.) and W. Bro. R. H. Ellis (Corinthian Lodge) also spoke. R.W. Harris was taken by complete surprise. He sincerely thanked the brethren for the present, which was quite unique, and he doubted if any other brother in the Dominion had received a presentation such as this, coming from three different Constitutions. It was only further evidence of the harmony and brotherly feeling existing between the three Constitutions at Thames, and he therefore would prize the present very highly.

CONSECRATION OF LODGE ARAWHAITI, No. 267.

A large and representative gathering of the Craft was present at the Masonic Hall, Princes Street, Auckland, on 31st July, when Lodge Arawhaiti, No. 267, was constituted and dedicated by W.M. Bro. O. Nicholson, P.G.M., Prov.G.M., assisted by R.W. Bros. Jas. Armstrong, D.G.M.; P. Kearsley, P.D.G.M.; W. T. Leighton, P.G.W. (S.W.); G. A. Gribbin, P.G.W. (J.W.); V.W. Bro. Rev. Angus MacDonald, P.G.C. (G.C.); R.W. Bro. Powley, P.D.G.M. (acting G.S.); V.W. Bro. C. E. Dutton, G.D. of C.; Bros. A. H. Waring, P.G.D. (S.D.); H. N. Gill, P.G.D. (J.D.); A. M. Bartley, P.G.O. (Org.); and F. H. Hounsell, G.P. (I.G.). In addition to a large attendance of G.L. officers, representatives of the Dist.G.L. of Auckland (E.C.), Prov. G.L. of New Zealand (I.C.), and Dist.G.L., North Island of New Zealand (S.C.) were present. The impressive ceremony was performed in a manner which evoked the admiration of all present, especially those who had never witnessed a similar ceremony before. The whole meeting went through without a single hitch. The Prov.G.M. afterwards installed W. Bro. A. G. Graham, P.M. as the first W.M. W. Bros. C. S. Lees (W.M., Ara Lodge, No. 1), and H. French (W.M., Lodge St. Andrew, No. 8) acted as presenting officers. W. Bros. G. Johnston (W.M., Lodge Maungawhau, No. 168), E. McDonald (W.M., Lodge Wairoa, No. 55), and A. S. Bailey (W.M., Ponsonby Lodge, No. 54) presented the W.Ts. The Dep. G.M. addressed the W.M.; R.W. Bro. W. T. Leighton, P.G.W., the Wardens; and the Prov.G.M. the brethren.

The following brethren were invested by the W.M. and Dep.M.:—D.M., W. Bro. D. Duncan, P.M.; S.W., A. Burns, jun.; J.W., E. W. Inder; Chap., W. L. Henton, P.M.; Treas., A. J. Harding; Sec., A. Burns, P.G.P.; D. of C., C. M. Luke, P.M.; S.D., B. C. Chilwell; J.D., O. E. Nicholson; Asst.-D. of C., P. H. Buck; I.G., N. H. Purdy; S.S. C. Robinson; J.S., M. Elliffe; Asst.Ss., C. F. Nicholson, W. V. Worth, S. Thorne George, L. J. Patrick, and W. S. Spence.

Four candidates were proposed for initiation. The W.M. gave notice of his intention to propose the election of M.W. Bro. Oliver Nicholson, Consecrating Officer, as an honorary member. H.G.W. and congratulations were extended by G.L. and the visiting Prov. and Dist. G.Ls. and representatives of about thirty Craft Lodges. The usual toast list was honoured in the refectory.

The new Lodge, which will meet in St. Mark's Hall, Remuera, is an offshoot of Lodge Ara, No. 1. Among the Forty-two founders, who all reside in Remuera, Epsom, and adjacent suburbs, are three P.G. Officers and six other P.Ms., so that the Lodge is starting under the most favourable auspices.

CONSECRATION OF CROWN CHAPTER AT CHRISTCHURCH.

An event of considerable interest and importance in the annals of Capitular Freemasonry took place at Sydenham, Christchurch, on Wednesday, 30th July, when a new R.A. Chapter was opened. This Chapter, which is to be known as the "Crown Chapter, No. 56," will meet in the hall of Lodge Crown, No. 138, in Wordsworth Street, Sydenham, a building well suited for the purpose.

Additional interest was lent to the occasion from the fact that the 1st G.Prin. (M.E. Camp. S. S. Allen) had notified his intention of personally conducting the ceremony of consecration. The members of the Christchurch and neighbouring Chapters assembled in good force, and having been called to order, the Consecrating Officer entered, accompanied by the following companions:—M.E. Comps. S. C. Bingham, A. C. Andrews, and C. Flavell P.G.Z.; R.E. Comps. G. Russell, D.G.Z.; G. J. Wallace, G.J.; W M. Hindmarch, G.Sup.; V.E. Comps. G. Barclay, G. H. Cooper, G. H. Harle, P.G.Soj.; J. Robertson P.G.S.W.; J. Furneaux, G.S.W.; J. A. Stables and J. N. Du Feu, P.G.D.C.; A. H. Hobbs, P.G.S.B.; F. C. A'Court, P.G.O. A Chapter having been formed, the object of the gathering was explained, and the Petition and Charter were read by V.E. Comp. Barclay, Acting-G.S.E., the petitioners were ranged in the customary manner, and having signified their approval of the officers named in the warrant, the G.Z. proceeded to carry out the beautiful ceremony of consecration. He was assisted by N.E. Comps. Bingham (corn), Andrews (wine), Flavell (oil),

and Hindmarch (salt). The invocations and prayers were delivered by G.J., and the duties of the G.D. of C. were capably carried out by V.E. Comp. J. N. Du Feu, while E. Comp. A'Court presided at the organ.

The installation of principals and officers was subsequently carried out by RE. Comp. Hindmarch, G.Supt., who installed Comp. W. A. Gribble into the chair of Z., the 2nd Prin. was installed and invested by V.E. Comp. Robertson, while V.E. Comp. Hobbs acted similarly with respect to the 3rd Prin. The Charter, etc., were presented by M.E. Comp. Andrews, M.E. Comp. Flavell addressed the 2nd Prin., and V.E. Comp. Harle the 3rd Prin. The officers were invested by V.E. Comp. Barclay. The G.Supt. addressed the 1st. Prin., M.E. Comp. Flavell delivered the address to the officers, and M.E. Comp. Allen addressed the companions. Congratulations to the infant Chapter were tendered by the representatives of the various Chapters present.

A banquet was held at the close of the Chapter meeting, and the usual toasts were honoured.

The following is the list of officers installed and invested:—Z., V.E. Comp. W. A. Gribble; H., E. Comp. J. E. Cooper; J., E. Comp. J. S. Temple; Treas., V.E. Comp. J. Gough; S.E., E. Comp. J. W. Piper; S.N., E. Comp. J. Scott; let Soj., E. Comp. R. S. Draper; 2nd Soj., E. Comp. B. E. Estall; 3rd Soj., E. Comp. J. L. Gant.

MASONIC LITERATURE

WRITE TO

C. A. INNES

28 Willis Street, Wellington

for

COMPLETE LIST OF MASONIC WORKS

The Future of Your Estate

An individual who spends his lifetime in providing means for his support and that of his family in his declining years, and of his family after his death, should, with equal forethought and care, select the best qualified representative available to look after the affairs of his estate after his death.

The Public Trustee has had fifty years' experience in the administration of estates of all classes. Included in these have been those of business men, farmers, and land-owners which have been administered to the complete satisfaction of beneficiaries.

The Office numbers amongst its staff specially appointed experts to advise on financial and farming problems. The services of these officers are available without charge to estates under administration.

Any testator who so desires may nominate a business man, farmers, and land-owners, which either to co-operate as Advisory Trustee with the Public Trustee in the management of his estate.

This system enables the advantages of private administration to be combined with the State Guarantee of estate moneys held in the Common Fund of the Public Trust Office, and is growing in favour amongst business men.

The charges for the administration of estates have recently been reduced.

Full particulars of the charges will be supplied on application at any of the 107 Branches and Agencies of the Public Trust Office throughout the Dominion.

The Public Trustee will prepare and hold in safe custody free of charge any will in which he is nominated as Executor.

No less than 40,000 Wills are at the present time held in safe custody by the Public Trustee on behalf of living testators.

“Value of Assets and Funds
under administration
on 31st March, 1924—£32,404,724.”

PUBLIC TRUST OFFICE

ESTABLISHED 1872.

STOP; LOOK, LISTEN!



Somewhere we have seen, as a part of the collect of an organisation, the appeal, "O God, keep us from pettiness," and it occurs to us that this same appeal might well be made by some members of our own order who seem to have forgotten—if they ever knew them—our fundamental principles.

Not that there is anything specific in the cardinal virtues, the principal tenets or ancient charges referred to in such adjuration, but rather that a consistent following out of their principles would relieve some of the members of the Masonic fraternity from a habit which ought not to be permitted to grow.

Too often, in the gossip of the Lodge ante-room, on the street, and elsewhere are heard comments upon a brother, and even the circulation of statements which are injurious to, or reflection upon a brother member of the Craft, all without consideration of the possible inaccuracy or even falsity of the statement, not to mention recollection of or consideration for the obligation entered into by every Freemason.

We are aware that it is human nature, perhaps, to talk injudiciously and to accept as true really unfounded statements when a little investigation of the right sort would set a brother right and prevent injury of or reflection upon another member of the Craft.

Too often, indeed, it is asserted that this or that brother has one or another faults when, perhaps, a little more intimate acquaintance with the brother in question might prove the contrary to be the truth. A frequent quotation, credited sometimes to Charles Lamb and at others to Ben Jenson, runs to the effect, in reference to a stranger sitting near by: "I do not know that man, therefore I hate him. If I knew him I probably should love him." There is a great deal more of human nature in this reputed quotation than we are sometimes willing to admit. Nevertheless indiscriminate gossip of one kind or another about a member of the Craft with whom those circulating the reports are not in any manner acquainted is very far from an exhibition of the true Masonic spirit. It is always well to be sure of facts before passing them along. Many an individual is led into an unfortunate situation by a willingness to repeat and even elaborate upon statements coming to him without authority.

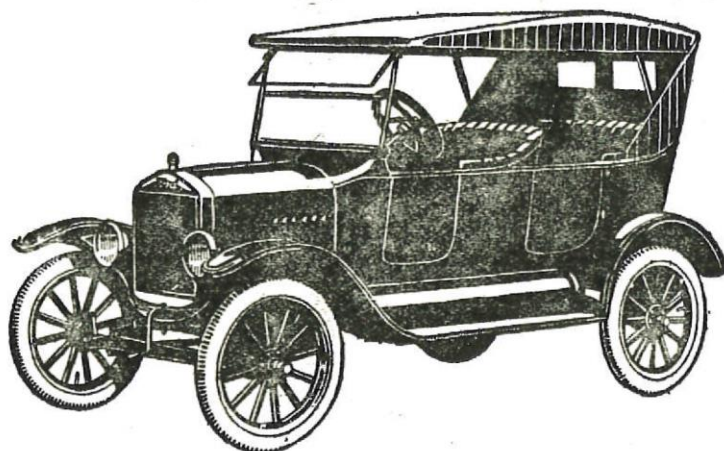
If there is anything at all which a Mason can well do with relation to a brother member of the Craft it is to "Stop, look, and listen," and then do a little investigating on his own account. —"Missouri Freemason."

MASONIC EQUALITY.



The idea of perfect equality in the Lodgeroom is one of the most charming principles in the whole Masonic system. A man is received into the fraternity on account of, his intrinsic and not his exterior, worth. Brains and heart, not wealth or estate, are the tests we apply to the Masonic qualifications. The poor man who can barely pay his annual dues, yet one who appreciates the grand philosophy of human life and lives up to that knowledge, is as worthy in the sight of God and the Lodge as the man who, with millions of dollars in a bank, barely understands the principles of our institution. The quality does not cease with personal merit alone, but extends to all individual rights of manhood and membership; for one man's religion, medicine, politics, and personal views is as good as another's, and must be respected. The law is not alone in favour of the humble, but is also just to the favoured, for the merits of all must be respected and all must be treated as gentlemen and brethren.

In the Lodge no title other than brother is recognised; let him be king, prince, potentate, or President, he is known and hailed as just "brother." Hence we are led to believe that if a man is a real Mason he would prefer the title of brother rather than that of some political or professional title; this is the carrying out of that grand principle, "All men are created equal, and have the same inalienable right." —"Masonic Home Journal."



See New Zealand First!

See New Zealand first—in a Ford!

The Ford will take you anywhere—quickly, surely economically. Neither steep hills nor muddy roads can keep a Ford away from its destination.

Your family will get a bigger share of health and happiness from the week you buy your Ford.

A Ford is always reliable, simple, easy to handle, and running cost is very low. Ford service wherever you go.

Summer is coming—get your Ford now!

FORD TOURING CAR £163 *F.O.B.*
Wellington

Subject to change without Notice.

Electric Starting, £17 extra.

BRITISH Manufacture! The Ford car is completely made in Canada, with the exception of parts to the value of £3/10/-

Ford

CARS - TRUCKS - TRACTORS

VISITING.

(A "Ten Minutes' Chat" by R.W. Bro. Wm. Hindmarsh, P.G.W., delivered in the refectory after the meeting of Lodge St. Augustine, No. 4., on 12th August.)

Omitting recently-formed Lodges, there are eleven Lodges in Christchurch with a total membership of 1455, and the interchange of official visits is unlimited.

The annual report of a city Lodge discloses:—

Number on roll (31 country members)	..	140
Average attendance of members at monthly meetings ..		53
Average attendance of visitors at monthly meetings ..		417

Omitting installation and special meetings to which G.L., P.G.L., sister Constitutions, and other Lodges were invited, the figures are:—

Number on roll..		140
Average attendance of members per meeting ..		52
Average attendance of visitors per meeting ..		28

Summarising the attendance figures of nine of the city Lodges shows:—

Number of members on combined roll		1212
Average attendance per meeting—members ..		434
Average attendance per meeting—visitors ..		463

And it is patent that the attendance of members is too small, and that of visitors unduly large.

Each W.M., moved apparently by the desire to have large meetings and maintain the prestige of his Lodge for hospitality, encourages other W.Ms. to pay frequent official visits, and he reciprocates as often as possible, and with as large a following as possible.

The only "pros" for this unrestricted system of which I can think are:—

That it promotes a strong fraternal feeling between the officers of the various Lodges.

That it creates a rivalry or tension which tends to keep the ceremonial work of each Lodge up to a high standard. Some of the "cons" are:—

That the W.M. who desires to keep step with those who set the pace must attend an unreasonably large number of meetings in addition to his own regular and installation meetings.

That he cannot do so without neglecting his business, his family, and the individual members of his Lodge.

That the time spent in receiving a lot of visitors unduly prolongs the meeting and the time taken in getting them settled at the F.B. so further delays matters.

That the social gathering after the meeting which ought to mean so much to the members of the Lodge, more particularly to the floor members, becomes more or less a scramble, and there is neither time nor proper opportunity for fraternal intercourse between the officers and members of the Lodge.

That in all cases the amount spent in entertaining is too large in proportion to the sum spent in benevolence, and in most cases too large in comparison with the annual income.

That the frequent calls upon brethren to accompany the W.M. on his official visits adversely affects their regular attendance at their own Lodge meetings.

That brethren are induced to attend so many meetings in addition to the regular meetings of their own Lodge that only 13 per cent. of the M.Ms. in Christchurch can spare time to take the R.A. Degree and complete their Masonic education.

I have endeavoured to state the case fairly, and it appears to me that the "cons" have it, and that there is room for reform.

The maxim "He who seeks only for applause from without has all his happiness in another's keeping" applies to Lodges as well as to individuals. My considered opinion is that it would be better for Freemasonry in

general and each Lodge in particular if official visits were reduced to a minimum and were restricted to the W.M. and Wardens, except perhaps at installation or very special meetings.

The W.M. and officers would then have time to get into more intimate touch with the floor members, to promote their happiness, to increase their knowledge, to improve their esprit de corps, and incidentally win their more regular attendance at their own Lodge meetings.

Speaking generally, each brother has other important interests and obligations to consider, and should not be expected to do more for Freemasonry than to attend regularly to his Lodge and Chapter duties. And I am convinced that the brother who does this will make firmer friendships and take a deeper and longer interest in Freemasonry than one who is addicted to visiting.

I trust my chat has not wearied you, and I hope the points mentioned may be deemed worthy of your earnest consideration.

HAVE WE TOO MANY PIN MASONS?

—◇—
By A. B. Leigh, 32deg.
—

A friend of mine was speaking of a certain Mason in our town, and called him a "pin Mason."

"He wears the Masonic pin all right, and a Consistory ring, and can spout the lingo; but when it comes to putting into actual practice some of the things that Masonry teaches he isn't there."

It is too often true; we have too many "pin Masons"; we forget the wonderful lessons we learned in such impressive ways; we feel puffed up when we say we are Masons, -forgetting that in real genuine practice only can we truthfully say we are Masons. Theories are beautiful things—to think about,—but doing the things we have been told to do are more helpful and more needed in these strenuous times of ours.

To-day as never before we need to be real Masons; to put into practice the sound doctrines of our Order, and to lift our lives to the possibilities of a day made glorious by the splendid teachings of the sacred laws of Masonry. For they are sacred laws, laws out of the great Book; tested and tried and found sufficient by thousands who have lived by their teachings.

In the out-of-joint condition of the world to-day Masonry stands like a spiritual Gibraltar and points the way to a happy solution of the troubles that afflict mankind. To reach out a helping hand; to speak a kind word where a kind word is needed; to be tolerant; to be true to the manhood that is in you; simple, isn't it? And yet a whole world of happiness is built out of these simple laws.

And a man who has been made a Mason knows these laws, and he knows how to use them; he is no longer blind, and he is no longer a fool unless he desires to be. He no longer stands outside the walls of spiritual insight, but has a keener and broader vision.

We do not have to wait for an opportunity to help; help is needed at your very door, and not an hour passes but that you have a chance to reach out a kindly hand and help some troubled brother; and the places for kind words are legion, and they cost so little and mean so much.

Haven't you had your heart go dancing for hours over some right word said in the right way and at the right time? You bet you have, and it gave the fellow who said the words a great warm glow in his heart, and it will you, too. If you haven't the habit of saying nice things once in a while to a brother, cultivate the habit and see how much you get out of it; and note how it cheers him.

To be tolerant is the duty of a true Mason; we are prone to judge harshly, to see only faults, to forget virtues. Don't think your friend is a failure if he falls; if he stays down he is, but his ability and agility to rise proves his worth. We are told to forgive many times and to judge with the judgment that should be kind when we are also told that as we judge so shall we be judged. It is a wonderful thing to think of, and means a wonderful thing individually applied.

—"The New Age."

SOME VIRTUES OF MASONRY.

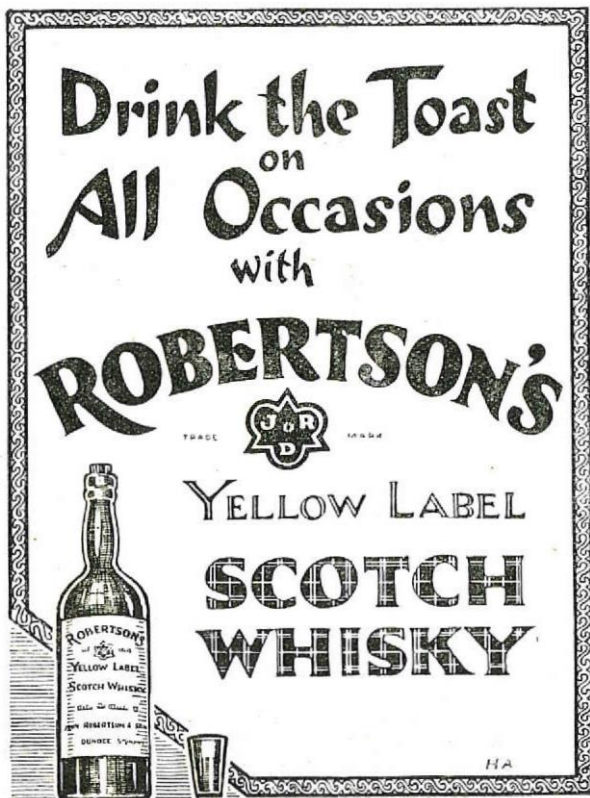
Obedience, Constancy, Fidelity, and Charitableness are some of the virtues of the great Masonic fraternity. One of the first virtues of a Mason is to be obedient, to bend to the high authority that is above, to feel that the officer in whose presence he stands is clothed with rights and powers that command respect. The character and worldly condition of the man is merged in the office, and he sits in the East not to exercise an arbitrary, but a delegated, power; and he is thus in some degree the infallible exponent of the rules and landmarks of the Craft, the impersonation of the genius and the authority of Masonry. No man is ever indeed with the spirit of the Craft without having that fixed attachment to its principles, its ordinances, and its labours which makes him a willing attendant upon the Lodge and induces in him a constantly growing fondness for our assemblies. The man who catches the honours of the Craft and leaves the Lodge, as he hands to his successor the jewels of his place may have some of the secrets of Masonry, but he has none of its principles. His attachments are to the fleeting honours of the officers, and he knows nothing of the constancy of the true and faithful brother.

Fidelity is another virtue implying a strict conformity to all the solemn requirements of a M.M.; a full, perfect, continued fulfilment of all the obligations of the Craft; obligations deep, strict, unconditional. Some of these may not be mentioned with more distinctness. But fidelity—the fidelity of a Mason—involves a watchful care; a delicate, but unwinking, vigilance upon all that concerns the Craft. No movement that has a direct bearing upon the Masonic institution can escape the faithful Mason's notice. He will see the evil and give the alarm. No true Mason will see a brother falling, relapsing from the path of rectitude, and neglect the solemn duty of admonition. If he admonish and entreat the erring brother in vain, he cannot be faithful if he neglect to inform the Craft of the danger they incur by the relaxed morals of the offender. If he is neglectful he forgets the letter and spirit of the Craft; he overlooks the ties that bind him by one link to the brother, and

by another to the institution. Fidelity to the Craft involves the unpleasant duty of rebuking, the erring as well as of admonishing the tempted brother.

A Mason must be charitable. With some the charitable man is he that gives his thousands to an object of public benevolence, or who doles a small portion to the beggar at the door. Either act may be charitable, or it may be a contemptible ostentation, undeserving the name of virtue, unworthy the approval of the Great Architect. The charity which is the bond of love with Masons lies deeper in the heart; it is the principle of the act rather than the act itself; it is the motive sanctifying the movement and giving merit to the deed. True Masonic charity finds its expression often in alms deeds; it is evidenced in the small pittance which the brother can spare to the widow and the fatherless; it is evident in the liberality with which the Masons of Chicago and Illinois have given to the Masonic homes and to the Masonic hospital and other worthy institutions. But charity also has other modes of expressing itself. It searches out the object for its exercise; it pours a light on the pathway of the wanderer; it guides him onward in his course and silently blesses him.

True Masonic charity exhibits itself in solicitude for the welfare of all interested in the benefits of the institution; it rejoices in the elevation and prosperity of a brother; and it sympathises in the humiliation and adversity of the unfortunate.—"Masonic Chronicler.



himself and generous to a fault. A talented musician with a remarkable adaptability which rendered the musical portion of any ceremony in which he participated appropriate and most impressive. Bro. Greer's contributions to the Wellington Lodge of Research have enriched our Masonic literature, many of them having been reproduced and favourably reviewed in Masonic journals throughout the British Empire, of which he was a devoted and patriotic son. His familiar presence will be greatly missed in Lodge, Chapter, and Temple.

The funeral was largely attended by members of both constitutions. The Rev. James Gibb, D.D., officiated in the mortuary chapel, and the W.M., Lodge Wellington, No. 1521, E.C., recited the brief Masonic service.'

"SOLOMON'S TEMPLE" WAS NEVER BUILT.

(By Bro. W. England, Chap., Lodge Rotorua, No. 153.)

Very crude are some of the statements made by writers who set out to throw discredit on the ancient and honourable Order of Freemasonry, but Richard Carlile, author of a work which he styles "A Manual of Freemasonry," seems to head the list with his absolute denial of Biblical history and his unequivocal challenge to all and sundry to prove Old Testament events from any source other than the V.S.L. It seems strange that man, as a rule, will place implicit reliance on that which he happens to find in old writings or inscriptions that may be unearthed in one place or another, while at the same time he looks askance at what is stated in the Bible. I often try to imagine the furore and excitement that would be occasioned among the learned of our time had the books forming the Bible but recently been brought to light from, say, Tutankhamen's tomb. What jabberings and consultations would take place in every tongue under heaven! and the newspapers would print columns of translations and publish photo lithographic reproductions of selected passages and chapters. All the old writers—now so highly commended—Eusebius., Herodotus, Moses of Chorene, Diodorus, etc.—would be discredited at once if they differed by a single fact from what was stated in the Bible, and the Scriptures would be lauded even more than the Koran, or the writings of Confucius, or the Book of the Dead, or the Vedas are lauded now. As it is, the V.S.L. is considered by some to be a mere collection of moral lessons padded out with fairy stories—wholly historic and unreliable. The Bible needs no defender—least of all myself,—but what I set out to do was to show where Carlile had erred, and to point a way whereby any who are not able to refute that writer's claims may find ample material to prove that his statements are loose and vain. I append some extracts from the anti-Masonic publication mentioned at the head of this paper, and, judging from these, the remainder of his work may be gauged at its proper value.

"The great subject of Freemasonry is Solomon's Temple . . . I am about to throw light upon it. My historical researches have taught me that that which has been called Solomon's Temple never existed upon earth; that a nation of people called Israelites never existed upon earth, and that the supposed history of the Israelites and their Temple is nothing more than an allegory relating to the mystery of physics generally and the moral culture of the human mind. Hence the real secret of-Masonry."

"Thus, again, that which was called the building of the first Solomon's Temple never took place on earth: but the story of the Temple was fabricated."

"That there was no such nation as the Israelites is a truth found in the consideration that they are not mentioned beyond the Bible in any record whatever. Egypt knew them not; Persia knew them not; Hindoostan knew them not; Scythia knew them not; Phoenicia knew them not; Greece knew them not as a nation.

". . . the Bible in its theological character is wholly, independently, exclusively, entirely a mythological book: and that from the name of Adam to the name of Christ in the supposed line of Jewish descent there is not the name of any one human being that has lived and passed the stage of life; every such name being the name of a principle, relating to human conditions."

"No such building as Soloman's Temple according to the literal reading of the Books of Kings and Chronicles in the Bible was ever raised in that country now called Judean but the mythological sketch existing, a colony of men called Jews under the protection and sanction of the Ptolemies of Egypt, about 2,000 years ago, did build a Temple on a spot of ground in Syria or Palestine which was called the second Temple, and became subject to the fate of all such structures, and at or after the building of that Temple the

name of Jerusalem was first given to the city by which it was to be surrounded, and the name of Judea to the district of land that had previously been called Palestine: the former Jerusalem having meant nothing more than a mythological city as it is explained in the Epistle to the Galatians and in the Book of Revelation, a Jerusalem or city of peace yet to be built."

Consequently, according to this writer, "the esoterical principles of Freemasonry, as of Christianity and of Judaism, is sun worship and science."

As Carlile considers the men and places mentioned in the Old Testament to be simply airy mirages, let us turn to witnesses who never saw or heard of the V.S.L. and find what they can tell us.

"The second Temple was built under the Ptolemies of Egypt, and the name Jerusalem was first given to the city by which it was to be surrounded."

The Ptolemies were in power in Egypt from 332-30 B.C. Herod, King of Judea, rebuilt a Temple at Jerusalem, beginning the work in the year B.C., or 10 years after the close of the Ptolemaic dynasty. This edifice is known to us as "Herod's" or the "Third Temple," the Second having been plundered and desecrated by Antiochus Epiphanes in 168 B.C.

Among the Tel-el-Amarna tablets or diplomatic correspondence is one from a certain "Abdi-taba, King of Urusalim (or Jerusalem)." This letter from the King of Jerusalem was sent to Tutankhamen's predecessor, and he lived in 1375 B.C.

Here, then, we have outside records that there was a city named Jerusalem in Palestine as early as 1375 B.C.; that a Temple existed in that city in 168 B.C. and that that Temple suffered at the hands of Antiochus

"A nation of people called Israelites never existed upon earth; Egypt knew them not."

In 1225 to 1215 B.C. there reigned in Egypt a Pharaoh whose name was Merenptah. A portrait statue of Merenptah and a stela which gives the most complete account of the Libyan Invasion were discovered in the funeral temple of this king. The hymn ends with a record of defeats, then we read:—

"The people of Israel is laid waste—their crops are not. Khor (Palestine) has become as a widow for Egypt."

The discovery of papyri at Elephantine in 1901 has given evidence that a Jewish settlement had their Temple there before 525 B.C. Perhaps this was for a little while the only Jewish one standing upon this island in the Nile at Assouan on the frontiers of Egypt.

Evidently there were Israelites ages ago, and Egypt did know them.

Solomon's Temple: If the Koran is not barred, mention of this Temple and many legends and stories of Solomon are to be found within its covers.

Pierson tells us that Rabbinical traditions say that in preparing the foundation of the second temple the workmen discovered a subterranean vault or cavity supported by seven pairs of pillars supporting so many arches. The entrance to the vault at the destruction of Solomon's Temple had been covered with rubbish, and so escaped observation.

The researches of archæologists have traced the existence of the arches both pointed and round 2,000 years anterior to the classic piles of Greece and Rome. In Barkett's "Walks About the City of Jerusalem" is described a small vault under that part of the Mosque of Omar, which occupies the site of the sanctum sanctorum of the Ancient Temple, and the Mohammedans claim that it was built by Solomon.

We are told that this Temple of Solomon's was lavishly adorned with gold, and that the articles used in the celebration of Divine Service were also of gold and silver. Where did Hezekiah, King of Judah, get his gold and treasure to pacify Sennacherib, King of Assyria, on that monarch's first expedition against Judea? The Bible relates that "at that time did Hezekiah cut off the gold from the doors of the Temple of the Lord and from the pillars which Hezekiah, King of Judah, had overlaid, and gave it to the King of Assyria."

Now, according to Richard Carlile, the name Hezekiah was simply the name of a "principle" and the Temple building a myth. Here's what Sennacherib himself has to say about this occurrence:—

"Because Hezekiah, King of Judah, would not submit to my yoke, I came up against him, and by force of arms and by the might of my power I took forty-six of his strong fenced cities; and of the smaller towns which were scattered about I took and plundered a countless number. And from these places I captured and carried off as spoil 200,150 people, old and young, male and female, together with harts, asses and camels, oxen and sheep, a countless multitude. And Hezekiah himself I shut up in Jerusalem, his capital city, like a bird in a cage, building towers round the city to hem him in, and raising banks of earth against the gates so as to prevent escape. . . . Then upon this Hezekiah there fell the feat of the power of my arms, and

he sent out to me the chiefs and elders of Jerusalem with thirty talents of gold and eight hundred talents of silver and divers treasures, a rich booty. . . . All these things were brought to me at Nineveh, the seat of my government, Hezekiah having sent them by way of tribute, and as a token of his submission to my power."

The foregoing is an absolutely independent corroboration of this piece of Biblical history. Naturally, Sennacherib did not concern himself as to the source of the treasure taken from Hezekiah, but as the Assyrian records have borne out the Scripture story in all its main points, the law of evidence will surely admit Hezekiah's further statement that he obtained the treasure by stripping the Temple—and that Temple was the one built by Solomon. Sennacherib, moreover, proves that Hezekiah was a man and not a nonentity, and that there was an earthly city called Jerusalem and a country known as Judea. And this was many years before the building of even the real "second" Temple.

Here is another point confirming the Biblical history. We are told that at a subsequent expedition against Hezekiah and the Pharaoh of Egypt a mysterious happening to the Assyrian army caused the King to terminate the war and hurry off home as fast as he could. You know the story: Hezekiah entered into negotiations with the Egyptians, and Sennacherib, understanding that the real enemy whom he had to fear was not Judea, but Egypt, marched his army through Palestine without stopping to chastise Hezekiah and the people of Jerusalem. He, however, sent Rab-shakeh to deliver an insulting letter to Hezekiah and to work upon the fears of the inhabitants of the city with the object of getting them to capitulate. Hezekiah spread this letter before the Lord in the Temple. At this time the Assyrians were facing the Egyptians and boasting of the morrow, which for them never came, for "the angel of the Lord went out and smote in the camp of the Assyrians an hundred four score and five thousand, and when they arose in the morning, behold they were all dead corpses." We get the confirmatory evidence from Egypt, for Assyrian Kings do not seem to have been in the habit of recording their defeats: Herodotus, in Book II., 141, writes this about the peculiar mishap that befell the Assyrians:—

"After this, Sennacherib, King of the Arabians and Assyrians, marched a large army against Egypt, whereupon the Egyptian warriors refused to assist him (Sethon), and the priest, being reduced to a strait, entered the temple and bewailed before the image the calamities he was in danger of suffering. While he was lamenting, sleep fell upon him, and it appeared to him in a vision that the god stood by and encouraged him, assuring him that he should suffer nothing disagreeable in meeting the Arabian army, for he would himself send assistance to him. Confiding in this vision, he took with him such of the Egyptians as were willing to follow him and encamped in Pelusium, for here the entrance into Egypt is; but none of the military caste followed him, but tradesmen, mechanics, and sutlers. When they arrived there a number of field mice, pouring in upon their enemies, devoured their quivers and their bows, and, moreover, the handles of their shields, so that on the next day, when they fled, bereft of their arms, many of them fell. And to this day a stone statue of this king stands in the temple of Vulcan, with a mouse in his hand and an inscription to the following effect: "Whoever looks on me let him revere the gods."

Shalmaneser, another King of Assyria, who reigned before Sennacherib, also knew the Israelites as a nation, for Jehu, King of Samaria, or, as he is known in the inscriptions, "son of Omri," sent as tribute to Shalmaneser a quantity of gold, silver, and articles manufactured of these precious Metals. Shalmaneser evidently was so proud of this acknowledgement of MS power that he had the event sculptured, and a reproduction appears in Rawlinson's "The Second Monarchy," p. 365. The sculpture shows a procession of Israelites—men not "principles"—carrying the treasure from Jehu, and the chief ambassador of the Israelites prostrating himself before the King of Assyria.

Another record states that Tiglath-Pileser also received submission and tribute from Ahaz, King of Judea.

Col. Gander, in one of his books, says that "'The land of Israel was called by the Assyrians the country of the Kumri, as on a pavement slab at Nineveh here Ivalush, King of Assyria, is spoken of as receiving tribute from the land of Kumri or Samaria. Also on a marble found by Rankin it is said, "Sargon, King of Assyria, came up against the city of Samaria and the tribes of the house of Kymri, and carried captive into Assyria 27,800 people."

Somewhere about the middle of the last century what is known as a "fragment" was unearthed in Mesopotamia. It gives the interesting information that among Ben-Hadad's allies when he was attacked by the Assyrians in B.C. 853 was "Ahab of Jezreel." Ahab, King of Samaria, seeing the importance of the crisis, sent a contingent of 10,000 men and 2,000 chariots—a contingent which took part in the first great battle between the armies of Syria and Assyria. Ahab, and not Jehu, is the first Israelitish monarch of whom we have mention in the Assyrian records.

The names of the Kings mentioned in the 14th chapter of Genesis have been proved beyond dispute to be those of Chaldean and allied Kings and as the greater part of the events detailed in that chapter are fully corroborated, we are quite justified in assuming that the rest is also true, and that the remaining names—Abraham and Lot—are also the names of men who took part in the events of that day, and not the names of some obscure "principle."

Another Egyptian witness is Shishak (or, according to the Egyptian records, Sheshank I.), who, in the sculptures in the great temple of Karnac, tells the tale of an expedition which he made against Rehoboam and Jerusalem.

My field of research is extremely limited, but I hope I have shown that the Old Testament stories may not lightly be set aside.

NOTICE TO CONTRIBUTORS.

All advertising matter, except Lodge advertisements, appearing in "The New Zealand Craftsman" is now under the entire control of THE CHARLES HAINES ADVERTISING AGENCY, LTD., Dalgety Buildings, Featherston Street, Wellington, to whom all cheques and other remittances on account of advertising should be made payable. Communications regarding publicity in the columns of the "Craftsman" must also be addressed to that Firm. Literary matter intended for publication is to be directed, as usual, to The Editor, G.P.O. Box 8, Wellington.

MASONIC PRINTING

Of every description may be
obtained with despatch at

“EVENING POST” General
Printing Works

INSTALLATION PROGRAMMES,
INVITATIONS, etc., a Specialty.

Reports.

It is requested that Correspondents will be good enough to limit the length of their reports by making them as concise and brief as possible. The Editor reserves the right to condense and shorten over-long reports.

CRAFT LODGES.

SOUTHLAND.

Southern Cross, No. 9.—The regular meeting was conducted on 7th August, W. Bro. H. J. Farrant presiding over a satisfactory attendance of members. The W.Ms. of Waihopai and St. John, accompanied by various brethren, were received. The business was the Third Degree, W. Bro. Farrant being assisted by R.W. Bros. Steans, Stout (Prov.G.M.), Wm. Smith (P.D.G.M.), W. Bros. Robinson and F. Padget, and Bros. Watson, Sherborne, and junior officers. Several brethren were presented with their diplomas and V.S.L. by W. Bro. Camm on behalf of the Lodge. The sociable gathering was held in the refectory at the close of the meeting.—
[Lodge Correspondent.]

Mokoreta, No. 63.—The monthly meeting was held on 17th July at Wyndham, when W. Bro. Williams presided over a satisfactory attendance of members and visitors, including W. Bro. Sydney Smith (W.M., Waihopai, No. 189), accompanied by a number of his brethren. The ceremony was the passing of two E.As., conducted by the W.M. and P.Ms., assisted by junior officers as follows:—Ob., W.M.; Ss., W. Bro. McRae; S.E.Ch., W. Bro. Richardson; T.B., W. Bro. Rice; Final Ch., W. Bro. Mortimer. A M.M.'s diploma was presented to a brother, and nominations accepted for office-bearers for the coming year. H.G.W. were received and Lodge closed, and an enjoyable social hour spent in the refectory.—[Lodge Correspondent.]

St. John, No. 94.—The regular monthly meeting was held on 17th July, when a large muster of brethren and visitors signed the attendance book. Bro. Geo. Curle, W.M., presided and conducted the Second Degree, being assisted by W. Bro. Ed. Jackson (S.E. Ch.) and W. Bro. Bonifant (Final Ch.). An enjoyable hour was spent in harmony at the close of the meeting.

An emergent meeting was held on 18th July, when the W.M. presided over a fair attendance. The W.M. of Lodge Waihopai, accompanied by several brethren, was in attendance. The ceremony of initiation was conducted as follows: Ob. and Ss., W.M.; Inv., Bro. Pedlar (S.W.); Ch.Ch., W. Bro. J. Fraser; R. for Prep., Bro. N. Thompson (S.D.); W.Ts., Bro. Wm. Falconer; Final Ch., W. Bro. Fortune. After the ceremony an adjournment was made to the refectory, where the customary social hour was spent.

Taringatura, No. 100.—The regular meeting was held on 14th July, when the W.M. (Bro. F. Gluyas) was in the chair. There was a good attendance of members, together with a number of visitors. The ceremony was the initiation of two candidates, carried out by the W.M. Ob.; Se. and Ch. after Inv., W. Bro. G. F. Johnson; N.E., Bro. C. It. Belsham; Prep., W. Bro. H. Graham; W.Ts., J.W. Bro. G. W. Johnson. V.W. Bro. E. C. Smith, Dep.Pro.G.M. visited the Lodge and addressed the brethren and congratulated the Lodge on the evident signs of progress. The visit of the Dep.Pro.G.M. was much appreciated by the officers and brethren of the Lodge. A very pleasant social hour was spent in the refectory.—[Lodge Correspondent.]

Victoria, No. 147.—The installation was held on 12th August, W. Bro. Denton presiding over a crowded temple. Members were in strong force, also large numbers of visitors from all parts of the Southland district. Official visits were paid by the W.Ms. and members of the three town Lodges, also several of the country Lodges. R.W. Bro. W. A. Stout, Prov.G.M., accompanied by P.Prov.G.Ms. in strong force, was received with customary honours, and conducted the ceremony. W. Bro. W. Fraser, W.M.-elect, was presented, Antient Charges read by W. Bro. Yule, Ob. administered, and W. Bro. W. Fraser placed in the chair for a second term, his previous Mastership being in 1921. Address to W.M. by R.W. Bro. W. A. Stout (Inst. Officer); Wardens addressed and invested by R.W. Bro. F. A. Steans; address to the brethren by R.W. Bro. T. M. Rankin; Investing Officers – R.W. Bros. Wm. Smith, Haggitt, and Hoyles, and W. Bro. E. B. Pitcher. Greetings were extended by visitors, and an adjournment made to the refectory, where a splendid banquet was provided. List of officers: S.W., Bro. McEachran; J.W., Bro. Dennison; Treas., W. Bro. Yule; Sec., W. Bro. Wilson; Chap., W. Bro. Petrie; S.D., Bro. Fraser; J.D., Bro. Caddie; D. of C., W. Bro. H. Geddes; Org., Bro. Leck; I.G., Bro. Young; Tyler, Bro. A. Cockroft; Stewards, Bros. Ellis, Geddes, Robie, Wilkinson, and Rae.—[Lodge Correspondent.]

Winton, No. 108.—The regular meeting was held on 15th July, Bro. Millar presiding over a good attendance of members. A considerable amount of routine business was disposed of and visitors admitted. W. Bro. Sydney Smith (W.M., Lodge Waihopai), accompanied by a following of brethren, was received with fitting honours, and at the request of the W.M. conducted the ceremony of initiation as follows:—Ob. and R. for Prep., W. Bro. S. Smith; Inv. and W.Ts., Bro. W. R. Copland, S.W.; Ch., W. Bro. Geo. Winter; Final Ch., Bro. A. Millar. Bro. A. Dix, J.D., did good service amidst strange surroundings. The Lodge was closed in P.L. and H. and an enjoyable hour spent around the "festive board."—[Lodge Correspondent.]

Waihopai, No. 189.—The regular meeting was held on 21st July in the Masonic Hall, Invercargill, W. Bro. Sydney Smith, W.M., presiding over an attendance of just over sixty members. About fifty visitors were admitted. W. Bro. Geo. Curle (W.M., Lodge St. John, No. 94) and W. Bro. H. Denton (W.M., Lodge Victoria, No. 147), supported by several of their members, together with P.Ms. and brethren of Lodge Southern Cross, No. 9. The meeting was in reality a military night owing to the presence of such a large

number of returned soldier brethren to see two of their number initiated. One of the candidates held a very important position in the N.Z.E.P. in the Great War. Most of the work was conducted by ex-soldier brethren, and was classed by visitors well qualified to judge as particularly good—in fact, a red-letter night in the history of the Lodge. The ceremony was conducted as follows:—Ob., W.M.; Inv., Bro. Copland, S.W.; Ch.Ch., W. Bro. J. D. Campbell; R. for Prep., W. Bro. Robt. Todd; W.Ts., Bro. Wm. Bell; 1st T.B., Bro. J. Cushen, J.W.; Final Ch. Bro. H. McKenzie. After H.G.W. by visiting brethren the Lodge was closed, and an enjoyable hour spent around the "festive board." The excellent speech of Bro. Rev. Gilbert (Chap.) in proposing the toast of "The Candidates," together with several good musical items, were greatly appreciated.—[Lodge Correspondent.]

OTAGO.

Palmerston, No. 26.—The installation of W.M. Bro. Jas. Lang and officers took place on 8th August by special dispensation, owing to Lodge Karitane, No. 221 being misled by taking our date from an unofficial calendar, and having already arrangements for their annual ball. The weather being fine, a record attendance was present, the following Lodges being represented:—Karitane, No. 221; Ngapara, No. 68; Arrow Kil., No. 86; Oceanic, No. 154; Waitaki, No. 11; Maori, No. 105; Hiram, No. 46; Taharangi, No. 235; Teviot, No. 148; St. John, No. 461, S.C.; Waverley, No. 226; and Otago Kil., No. 82. It seemed like old times to see such a good muster of Oamaru brethren. The installation was conducted by R.W. Bro. W. C. Lischner, Proy.G.M. (who, unfortunately, was suffering from a severe cold), assisted by R.W. Bro. O. H. Moller, P.Prov.G.M.; W. Bros. W. H. Hopkins, P.G.J.D.; G. R. Henderson, P.G.P.; P. McCaskill W. R. McKenzie, S. L. Beck, D. Munro, and R. Cameron, and R.W. Bro. P. Ledingham (Otago Kil., No. 82). The ceremony was capably carried out under the directorship of V.W. Bro. J. H. Moir, G.D.C. The addresses were delivered by W. Bro. P. McCaskill. After the Lodge was closed, those present—about sixty—adjourned to the Town Hall, where the usual banquet was held, and although the night was exceedingly cold the brethren appeared to enjoy themselves, and kept going till after midnight. The usual toasts were duly honoured, and items were contributed by Bro. McKillop, W. Bros. Moodie and D. Ross, Bros. Reid, Tipini, and Balmbra, W. Bros. Moodie and Ross. Bro. J. Thomson, of Lodge Karitane, was well up to his usual dramatic form in recitations. [Lodge Correspondent.]

A Roberts Suit is 2 Guineas Cheaper—!
Genuine Tailor-made Suits
 from £6/10/-

G. S. ROBERTS
 TAILOR AND MERCER
 STOCK EXCHANGE, DUNEDIN.

The National Mutual Life Association of Australasia, Limited

By the world's greatest authorities on Life Assurance the Limited Payment Policy is recommended. The premium charged by the National Mutual for this Policy is the lowest on record.

Enquiries solicited.

C. EUGENE SMITH,
 New Business Manager,
 30 Shortland Street, Auckland.

(*Phone Number: Business, 116.)

H. J. FREEMAN
WATCHMAKER AND JEWELLER
 16 MANNERS STREET, WELLINGTON

Has in Stock

ROYAL ARCH SASHES AND APRONS

SUITS FOR FIRST PRINCIPAL

Manufacturers of Officers', Presentation, R.A., and Mark Jewels, R.A. and Craft Working Tools.

W. CRIGHTON & CO.

Sawmillers, Ohakune.

Timber Supplied at Lowest Current Rates.

Hiram, No. 46.—An emergency meeting was held on 1st July, three brethren being raised to the Third Degree.

The regular meeting was held on 22nd July, W. Bro. A. Logie, W.M., presiding. R.W. Bro. Lischner, Prov.G.M. of Otago, was admitted and received with the customary honours. The ritual work was the initiation of a candidate. The Prov.G.M. congratulated the W.M. on the excellent manner in which the ceremony was conducted. Three affiliating brethren were balloted for and elected. Two candidates were proposed for membership. A collection was taken up in aid of the W. and O. and A.M. Fund, realising a satisfactory amount.—[Lodge Correspondent.]

Waverley, No. 226.—The W.M., W. Bro. C. B. Gollop, presided at the regular monthly meeting on 15th July. The ceremonial work was the passing of two candidates. The agenda included the nomination of officers for the ensuing year. With the exception of that of Chief Steward, there is only one nomination for each office, the S.W. for W.M., S.D. for S.W., Sec. for J.W.; the remainder take one step up, and the only Rev. brother in the Lodge has been nominated for Chap.

On the following Saturday the W.M., accompanied by eighteen officers and brethren, including the Prov.G.M. for Otago, R.W. Bro. Wm. Lischner, journeyed by motor cars (five) to Roxburgh to visit Lodge Teviot, No. 148. Weather conditions were most unfavourable, heavy snowstorms being encountered on the hundred-mile journey. However, an exceedingly optimistic spirit prevailed throughout, the ears reaching their destination without mishap (not even a puncture) at 5.45 p.m. After Lodge Teviot had transacted its routine business the visiting Lodge was received. The Lodge was then raised to the Third Degree, and the Prov. G.M. received with full Masonic honours. The Lodge was then lowered to the First Degree and the gavel handed over to the visiting W.M., who, with his officers, conducted the ceremony of initiation on one candidate. At the first time of asking, the Prov.G.M., on behalf of G.L., congratulated the visiting Lodge on the excellent rendering of the ceremonial. Afterwards a pleasant hour or so was spent in the refectory, where toasts, usual and unusual, were duly proposed and honoured, interspersed with song and story. Before leaving on the following day the visiting brethren were taken by several local brethren to see the new hydro-electric power plant. The visit, despite the unpleasant climatic conditions, was most enjoyable, and will long live in the remembrance of those who were privileged to make the trip.—[Lodge Correspondent.]

CANTERBURY.

Unanimity, No. 3.—The regular monthly meeting was held on 5th August, the W.M., W. Bro. Kerr, presiding over a good attendance. For the first time for a long period no degree was worked, there being no candidate ready. So the W.M. carried out the injunctions of the I.M., and had the Lodge By-laws read. The method adopted was rather unique, the S.D. passing a copy around the Lodge, and each member present reading a portion aloud. This was followed by an extremely instructive paper being read by W. Bro. T. C. Hatton, the Lodge Preceptor, who took for his subject "Side-lights on the Ritual." Two propositions were read, and the W.M. announced that the G.Sec. had promised to read a paper at our next meeting. A ladies' evening has been fixed for 30th August. The subsequent proceedings in the refectory were most enjoyable.—[Lodge Correspondent.]

St. Augustine, No. 4.—The regular monthly meeting was held in the Christchurch Masonic Hall on 12th August. Contrary to expectations, in view of the particular date, a large muster of his own P.Ms. and brethren were assembled when W. Bro. C. J. Jones (W.M.) and his officers entered. The business included two ballots (both clear), one proposition for membership, a resignation, and a recommendation to make a donation to the funds of M. and P.M., No. 130. One P.M. was nominated for office in Prov.G.L. Report was made of bereavements suffered by some of the brethren, and resolutions of sympathy were adopted. The ceremonial work was to initiate two candidates, and the W.M. was assisted in the ceremony by W. Bros. Temple (W.M., Lodge Crown, No. 138), Nedman (W.M., Lodge Robert Burns, No. 139), and Anthony, Tomkinson-Y and Duff. During the subsequent period in the refectory R.W. Bro. W. M. Hindmarsh, P.G.W., a P.M., gave a most interesting "ten minutes' chat" on the vexed subject of visiting, stressing the fact that too much visiting was indulged in by members of town Lodges, to the detriment of that daily advancement in Masonic knowledge recommended to all members in one of the earliest charges delivered to initiates. Congratulations were extended to two P.Ms. on their reappearance after a period of ill-health. [Lodge Correspondent.]

Christchurch, No. 91.—The monthly meeting was held on 22nd July, W. Bro. H. L. Adams, W.M., presiding over a large muster. After routine business the W.M. received V.W. Bro. Du Feu, Dep.Prov.G.M., and his officers, also the W.M., officers, and 20 brethren of Lodge Lincoln. W. Bro. Adams then handed over the gavel to W. Bro. Smithers (W.M., Lodge Lincoln), and asked him to conduct the ceremony of raising two brethren to the H. and S. Degree of M.M. The W.M. ob. the candidates, and conducted the raising. W. Bro. McKenzie communicated the Ss, the S.W. continued the T.M., W. Bro. Adams explained the T.B., and W. Bro. Forbes presented the W.Ts. After the Lodge was closed a social hour was spent in the refectory.

The twenty-third annual adult social was held in the social hall at the Masonic Temple. A large gathering of the brethren and their lady friends was present. A musical programme was given for the first hour, after which dancing was indulged in till the "wee sma' hours."—[Lodge Correspondent.]

St. Augustine, No. 99.—The installation of W.M. and officers for the year 1924-25 took place on Wednesday, 13th August. The meeting proved a record one for this Lodge, between 140 and 150 signing on, including representatives of 21 Lodges of the various Constitutions. Such a meeting must be regarded as a tribute of high respect for the outgoing and incoming W.Ms. W. Bro. A. J. Jones presided. A letter was received stating that the old charter of this Lodge (St. Augustine, No. 576) had been forwarded to the G.L. of Scotland for cancellation and request for its return to this Lodge. R.W. Bro. W. McBride, Prov.G.M., was accompanied by the following Prov. G.L. officers:—W. Bros. J. W. Souter, S.G.W.; J. W. Beanland, J.G.W.; G. J. Shackleton Act.-G.S.; H. H. Pawson, S.G.D.; C. Dash, J.G.D.; G. Mckitterick, G.D.C.; G. Tate, G.S.; F. Stowell, G.S.; D. A. Fulton, I.G. W. E. Evans, J. T. Hunt, J. Manchester. R.W. Bro. McBride was greeted in due form. The Dist.G.L. of Canterbury, E.C., was represented by V.W. Bro. A. J. Jones, sen., D.D.G.M., accompanied by Dist.G.L. officers. G.L. was duly greeted with full honours. W. Bro. A. S. Jones presented Bro. Samuel Malthus, S.W., for Ob. A board of 20 P.Ms. was formed by R.W. Bro. McBride. The W.Ts. in the three degrees were presented by W. Bro. G. Dellow (W.M., Lodge Pareora, No. 134), A. L. Taylor (W.M., Lodge Timaru, No. 196), W. McKinney (W.M., Lodge Caledonian No. 6) respectively. M.W. Bro. M. Thompson presented the Warrant, Book of C., and By-laws. R.W. Bro. McBride addressed the W.M. The Wardens were invested by W. Bro. J. H. Beanland, Prov.G.J.W., and they were addressed by W. Bro. F. Stowell, Prov.G.S. Upon W. Bro. J. W. Souter devolved the duty of investing the officers. W. Bro. A. J. Hoskins, P.G. Purs., addressed the brethren. The sum of £16 15s. was gathered in for the W. and O. and A. M. Fund. Owing to the greatly overcrowded state of the Lodgeroom the processional part of the ceremony had to be dispensed with. The trumpet calls were given by W. Bro. T. Mitchell. The Lodge being closed, an adjournment was made to the Olympia Hall, where a most sumptuous repast had been prepared by Bro. Burford, and a long list of toasts, etc., was gone through. R.W. Bro. McBride made a few preliminary remarks as to the worthiness of the recipient, and then gracefully asked V.W. Bro. A. J. Jones, sen., to pin on his son's breast a P.M.'s jewel. Proud father, no doubt! The following is the list of officers for the incoming year:—S.W., Bro. B. Watkin; J.W., Bro. J. Bird; Chap., Bro. C. Asher; Treas., W. Bro. G. J. Shackleton; Sec., W. Bro. A. J. Hoskins; D. of C., W. Bro. A. Colville; S.D., Bro. R. R. Clear; J.D., Bro. G. H. O. Barclay; I.G., Bro. L. C. McLauchlan; Org., W. Bro. J. Menzies; Stewards, Bros. W. Barford, G. B. Turnbull, H. H. Meredith; Tyler, Bro. Arthur Slade; Auditor, W. Bro. W. A. Lee.

MARLBOROUGH AND NELSON.

Unanimity, No. 106.—The installation meeting was held in Ledge Wairau on 9th August, and the attendance was easily a record for such a gathering in Marlborough. Over 150 brethren signed the attendance book, and there were large parties representing Lodges Victory (Nelson), Havelock, Waitohi (Piston), and Wairau (Blenheim), whilst several brethren conveyed greetings from Lodges in various parts. The installation of Bro. A. M. Thomson into the W.M.'s chair was performed by R.W. Bro. R. P. Furness, Prov.G.M., and the Nelson brethren assisted as acting G.L. officers, the following taking part:—W. Bros. A. G. Shrimpton, J. L. Ching, A. E. Davis, H. Harris, J. Morgan, L. M. Estcourt, H. Hobbs. Bro. A. E. L. Scantlebury was at the organ, and the trumpet calls were introduced by Bro. Lock (Nelson). W. Bro. J. M. Lightfoot assisted in the Board. The following officers were invested by W. Bros. Shrimpton, Davies, and Harris:—Chap., Bro. C. E. Butcher; Treas., Bro. J. G. S. Thompson; Sec., W. Bro. T. F. Bull, P.G.S.; S.D., Bro. J. Bary; J.D., Bro. A. W. Wanden; D. of C., W. Bro. C. A. Eckford; Org., Bro. A. E. L. Scantlebury; I.G., Bro. G. H. Gray; S.S., Bro. W. J. Elvy; J.S., Bro. J. E. Barton; Assistants, Bros. E. H. Whiting, F. Mogridge, O. G. Thomas, L. Barltrop; Tyler, Bro. C. N. Fisk. The banquet was held in the refectory of the

new Masonic Temple, and it was a very successful function. Again there were over 150 brethren in attendance, and as they were comfortably accommodated in the new building their enjoyment was much enhanced. Songs were rendered by Bros. Plum and Gray, and a small orchestra, led by Bro. Scantlebury, helped materially to enliven the gathering.—[Lodge Correspondent.]

HAWKES BAY.

Abercorn, No. 30.—Our regular monthly meeting was held on 21st July, when the business was to raise a candidate. The W.M. invited the P.Ms. to work the degree, and W. Bro. G. H. Hunt took the chair. The other offices were taken by following W. brethren:—S.W., C. H. Critchley; J.W., R. J. Pellow; S.D., A. Parkin; J.D., G. Neilson; Chap., T. Williams; LG., R. N. Verran; Org., E. E. Boit. The candidate was ob. by W. Bro. G. H. Hunt. The Exh. was delivered by W. Bro. C. H. Critchley, the first part of the T.H. by W. Bro. V. Williams, and W. Bro. Critchley recited a passage of Scripture, W. Bro. G. Neilson gave the Ch. after R., and W. Bro. R. J. Pellow communicated the Ss. The S.W. invested, W. Bro. E. E. Bott gave the second part of the T.H., and W. Bro. A. Parkin explained the further Ss. The W.T. were presented by W. Bro. R. J. Pellow, and the Final Ch. was rendered by W. Bro. Critchley. The gavel was then handed back to the W.M., who expressed his appreciation of the way that the work had been carried through. A pleasant hour was spent in the refectory, during which our W.M. invited the Lodge to accompany him to Divine Service at a date to be arranged.—[Lodge Correspondent.]

On Sunday evening, 17th August, the brethren of Ledge Abercorn, on the invitation of the W.M., attended Divine service at the Methodist Church, Waipawa. The service was conducted by the Rev. F. J. Parker in a most impressive and inspiring manner, and was greatly appreciated by all the brethren present.

The regular monthly meeting was held on 18th August. There was a very fair attendance, and we also had the pleasure of receiving several visitors. The work, the raising of one brother, was well done, being carried out by the following:—Questions and Ob., W.M., Bro. W. S. Thackeray; Exh., W. Bro. C. H. Critchley; 1st part T.H., W. Bro. T. Williams; Ch. and Ss., W. Bro. R. N. Verran; W. Bro. E. E. Bott; Ex.Ss., W. Bro. A. Parkin. The J.W., Bro. F. Holt, presented the W.Ts., and the Final Ch. was given by W. Bro. Chaplin. The copies of the V.S.L. upon which they had been ob. in all degrees were presented to two brethren. W. Bro. G. H. Hunt delivered a lecture on the duties and obligations of a Freemason. A pleasant hour in the refectory was spent, and the usual toasts honoured.—[Lodge Correspondent.]

AUCKLAND.

United Service, No. 10.—The regular monthly meeting was held on 30th July, W. Bro. A. W. T. Pooley in the chair. Business was the First Degree, two candidates being initiated. The work was carried out as follows:—Ob. and Ss., the W.M.; M.E. Ch., W. Bro. S. W. Turley, I.P.M.; M. of Prep., W. Bro. W. Tailby, P.M.; W.Ts., Bro. A. V. Swales, J.W.; Final Ch., Bro. L. E. Harvey, S.W. The Lodge was closed in P., L. and H., after which a pleasant hour was spent in the refectory.—[Lodge Correspondent.]

Waipu, No. 179.—The regular monthly meeting was held on 12th August, W. Bro. Fenton McKay, W.M., being in the chair. A fair number of brethren signed the A.B. No degree work being on hand, the Charges of a Freemason, from the Book of C., were read. The Lodge being closed in P., L. and H., half an hour was pleasantly spent in the refectory.—[Lodge Correspondent.]

Onewa, No. 182.—The first meeting of the Lodge since the loss of our W.M., the late Bro. G. W. Lewis, was held on 28th July. W. Bro. J. M. Cassie, I.P.M., initiated one candidate, being assisted as follows: W. Bro. J. Leckie. Ch. after Inv.; W. Bro. W. E. Carter, N.E.Ch.; W. Bro. J. P. Verran, R. for Prep.; Bro. H. W. Tyer, J.W., W.Ts.; and Bro. Kinnear Smith, S.W., Final Ch. Bro. A. Golden was invested as S.D. The Lodge will be in mourning for three months.—[Lodge Correspondent.]

Morningside, No. 228.—An emergency meeting was held in Hirst's Hall on 28th July. The W.M., W. Bro. W. H. Keatley presided, when five F.Cs. were raised. The W.M. was ably assisted in the ceremony by W. Bro. W. L. Harding (W.M., Lodge Arahonui, No. 264) and W. Bros. L. Dodds, J. Heerdegan, M. A. Benny, C. H. Taylor, and the officers of the Lodge.

The regular monthly meeting was held on 11th August, the W.M. presiding over a good attendance. There were three proposals for membership. The ritual was the initiation of two candidates. W. Bro. C. Drew gave the Ch. after Inv., W. Bro. M. Blair the address in the N.E.C., and the M. of Prep. was explained by W. Bro. M. A. Benny, P.G.B.B. The J.W. presented the W.Ts., and the Final Ch. was delivered by the S.W. The customary social was held after each meeting.—[Lodge Correspondent.]

Te Puke, No. 261.—The regular monthly meeting was held on 23rd July, W. Bro. G. W. Brown presiding over a full muster of brethren. A number of visitors were present, including the W.M. of Lodge Tauranga (W. Bro. H. L. Jones). The work was the initiation of two candidates, The W.M. ob. the candidates and communicated the Ss., W. Bro. ——— delivered the N.E. Ch., the R. for Prep. were explained by the S.W., the W.Ts. wore presented by Bro. D. N. Wilson, and W. Bro. F. A. B. Cameron delivered the Final Ch. The customary social gathering was held after the Lodge closed.—[Lodge Correspondent.]

WELLINGTON.

Tutanekai, No. 156.—The regular meeting was held in the Lodgeroom, Adelaide Road, on 7th August, the W.M., W. Bro. Jones, presiding. In spite of the inclement weather there was a good attendance of members and visiting brethren. Three candidates for the Second Degree were passed. After the Lodge had closed a pleasant hour was spent in music, song, and story.—[Lodge Correspondent.]

Whetu Kairangi, No. 201.—An emergency meeting was hold on 17th July. The work consisted of passing two candidates to the Second Degree. The W.M., Bro. T. H. R. Boon, filleted the work as follows:—Ob. and Ss., W.M.; Ch. after Inv., R.W. Bro. Russell; S.E., W. Bro. Morris; W.Ts., W. Bro. Robertson; Final Ch., W. Bro. T. W. Boon. A pleasant hour was spent in the refectory, and regret was expressed at the inability (owing to sickness) of V.W. Bro. T. Porritt, P.M. P.G.Chap. assisting in the ceremony.

The regular monthly meeting was held on 9th August, when two candidates were initiated. The work was allotted as follows:—Ob., W.M.; Ss., W. Bro. Robertson; .Ch. after Inv., W. Bro. L. A. Ayson; N.E., Bro. Brown; Ex. of Prep., Bro. Marshall, 1.G.; W.Ts., Bro. Snelling, J.S.; Ch. after Initiation, Bro. Huggin, S.W. A pleasant hour was spent in the refectory. Amongst the visitors were the W.M., Lodge Leinster, accompanied by a number of his brethren, also two P.Ms., father and brother of one of the candidates.

The "ladies' evening," which was held in the Lodgeroom, Masonic Hall, Seatoun, on the 26th July, 1924, was pronounced a great success. There were about sixty couples present, who spent a very enjoyable evening dancing. There were also a number of songs and recitations given. An adjournment was made to the Kiosk for supper. The W.M. welcomed the ladies, and the S.W. responded humorously on their behalf.—[Lodge Correspondent.]

ROYAL ARCH CHAPTERS.

Southern Cross, No. 3.—The monthly convocation was held on 6th August, when V.E. Comp. ———, in the absence of the 1st Prin., presided, and opened the Chapter, assisted by E. Comps. A. Scott (2nd Prin.) and E. Comp. Bonifant (3rd Prin.). Election of officers was taken, and resulted in E Comp. A. Scott being declared 1st Prin.-elect. The wads was the exalting of two E.Ms., conducted as follows:—Oh and Ss., V.E. Comp. Hoyles; Ss. Further Must., E. Comp. McCarroll; W.Ts., E. Comp. Sydney Smith; Final Ch., R.E. Comp. Wm. Irvine, G.Supt, E. Comp. Wilson as 1st Soj did good work. A very enjoyable hour was spent in the refectory afterwards.— [Chapter Correspondent.]

Wallace, No. 34.—The monthly convocation was held at Otautau on 24th July, when V.E. Comp. G. Charlton, 1st Prin., presided over a good attendance of companions an visitors. An official visit was paid by R.E. Comp. W. F Irvine, G.Supt., and V.E. Comp. Winning (1st Prin. of Southern Cross, No. 3). The ceremony was Passing of the Veils, and was conducted by W.E.M. Bro. Sinclair and officers. Able assistance was rendered by Bros. Hill and Bird. Lodge of E.Ms. closed, and business resumed in the R.A. Degree. To put the Chapter on a sound financial basil it was decided to raise the annual dues from. 12/6 to £1. very enjoyable hour was spent in the refectory at the close of the meeting.—[Chapter Correspondent.]

Huiroa, No. 47.—The annual meeting was held on 5th August, a week earlier than usual, to avoid clashing with the installation of Lodge Victoria, No. 147. V.E. Comp. W. Gee, Z., occupied the chair, and received visitors from Southern Cross Chapter, No. 3. R.E. Comp. Wm. Irvine (G.Supt. of Southland), supported by M.E. Comp. W. M. Smith (P.G.Z.), R.E. Comps. T. M. Rankin (G.H.), F. A. Steans (P.G.Supt.), V.E. Comps. Critchfield (G.Std.B.), Hoyles, and Rusden were received with fitting honours. E. Comp. F. Young was installed and invested 1st Prin. Z. by R.E. Comp. Irvine; E. Comp. J. C. Ray, 2nd Prin. H., by R.E. Comp. T. M. Rankin (G.H.); and E. Comp. E. Frobarth, 3rd Prin. J. by V.E. Comp. Hoyles. Installation of W.M.M. was conducted by V.E. Comp. Jos. Critchfield. The three Prins. were addressed by M.E. Comp. Wm. Smith, R.E. Comps. Rankin and Irvine, and V.E. Comp. Hoyles. Scribes E., H., and Treas. were invested by E. Comp. Sydney Smith; 1st, 2nd, and 3rd Sojs. by E. Comp. A. Scott. Address to officers, V.E. Comp. Rusden; to companions, by V.E. Comp. E. C. Smith, G.D.C. Greetings were extended by visiting companions, and the Chapter closed in L. and U., and a very enjoyable hour spent in the social room.— [Chapter Correspondent.]

Hauraki, No. 454, I.C.—The annual meeting was held on 11th July in the presence of a large attendance of visiting R.A. Masons, in the Masonic Hall, Queen Street, Thames. The Prins. installed were Comp. C. Palmer as King, Comp. H. C. Cordes as High Priest, and Comp. A. J. Brokenshire as Chief Scribe. The 1st Prin. was installed by E. Com. J. A. Messenger (P.Z., Auckland Chapter), the 2nd Prin. by V.E. Comp. F. Wiseman (D.G.S., Ara Chapter), and the 3rd Prin. by C. H. Jenkins (P.Z., Auckland Chapter). The three Prins. received an interesting address by E. Comp. F. E. McCullough. The following officers were invested by E. Comp. C. Palmer:—C. of H., E. Comp. Jas. H. Hodge, P.K.; Supt. of T., Comp. T. W. Newman; R.A. Capt., Comp. T. J. Buchan; Capt. of S.V., Comp. G. W. Stamper; Capt. of P.V., Comp. A. Phillips; Capt. of B.V., Comp. J. Mogg; Chap., E. Comp. G. Cullen, P.K.; D. of C., E. Comp. F. McCullough, P.K.; Inner Janitor, Comp. P. Gooder; Senior Steward, Comp. J. Pratt; Junior Steward, Comp. N. Jonassen; Outer Steward, Comp. W. F. Kemp; Auditors, E. Comp. J. G. Shand, P.K.; E. Comp. F. McCullough, P.K.— [Chapter Correspondent.]

KNIGHTS TEMPLAR.

Wellington Preceptory.—A. meeting was held in the Chapel, Donald McLean Street, on Thursday, 31st July. There was a full muster of members. The venerable Preceptor made eloquent allusion to the great loss the Preceptory had suffered in the death of Sir Knight J. C. Greer, who was in every respect a worthy member. The ceremony of the Templars' Degree was worked and two companions were received, admitted, and consecrated Knights of the Temple. The annual meeting will be held in September, when Sir Knight James Rod will be installed Preceptor.—[Preceptory Correspondent.]

WHEN IN CHRISTCHURCH

Visit

DOMINION HOTEL

GLOUCESTER STREET.

FIRST-CLASS ACCOMMODATION.

PERCY CURTIS, Proprietor.

Phone 904.

Box 530.

THE GRAND LODGE OF NEW ZEALAND

OF ANTIENT FREE AND ACCEPTED MASONS

258 Active Lodges, with an Approximate Membership of 22,000.

PATRON:

H.R.H. the Duke of Connaught (M.W.G.M. of England).

GRAND MASTER:

M.W. Bro. John Rushworth, Viscount Jellicoe, Government House, Wellington.

PRO GRAND MASTER:

M.W. Bro. Henry Leslie Michel, Hokitika.

PAST GRAND MASTERS:

M.W. Bro. Henry Thomson (deceased)	1890-92
M.W. Bro. Malcolm Niccol	1892-94
M.W. Bro. Francis Henry Dillon Bell (resigned)	1894-96
M.W. Bro. William Barron (deceased)	1896-98
M.W. Bro. Richard John Seddon (deceased)	1898-1900
M.W. Bro. Alexander Stuart Russell (resigned) (deceased)	1900-02
M.W. Bro. Herbert James Williams (deceased)	1902-04
M.W. Bro. Alfred Henry Burton (deceased)	1904-06
M.W. Bro. His Excellency Lord Plunket (deceased)	1906-10
M.W. Bro. C. J. W. Griffiths (deceased)	1910-12
M.W. Bro. F. C. Binns (honoris causa) (deceased)	1911
M.W. Bro. M. Thompson	1912-14
M.W. Bro. John Joseph Dougall	1914-16
M.W. Bro. Oliver Nicholson	1916-18
M.W. Bro. A. L. Herdman	1918-20
M.W. Bro. Thos. Ross	1920-22
M.W. Bro. S. C. Bingham (honoris causa)	1922

PAST PRO GRAND MASTERS:

M.W. Bro. F. C. Binns (deceased)	1906-08
M.W. Bro. O. Nicholson	1908-10

GRAND LODGE OFFICERS, 1923-24:

Deputy Grand Master—R.W. Bro. James Armstrong.

Provincial Grand Masters of Districts—

Auckland—M.W. Bro. Oliver Nicholson.

Canterbury Province—R.W. Bro. Wm. McBride.

Wellington—R.W. Bro. G. Russell.

Otago—R.W. Bro. Wm. Lischner.

Southland—R.W. Bro. W. A. Stout.

West Coast—R.W. Bro. F. C. Wade.

Hawkes Bay—R.W. Bro. J. W. Ritchie.

Nelson and Marlborough—R.W. Bro. R. P. Furness.

Taranaki—R.W. Bro. W. N. Ewing.

Ruapehu—R.W. Bro. W. Haydon Maclean.

Senior Grand Warden—R.W. Bro. W. G. Hay.

Junior Grand Warden—R.W. Bro. J. K. Hornblow.

Grand Chaplains—V.W. Bro. Rev. J. W. P. Dyer, V.W. Bro. Rev. E. Drake.

Grand Treasurer—V.W. Bro. J. W. Hillary.

Grand Registrar—V.W. Bro. T. H. Williams.

President of Board of General Purposes—V.W. Bro. A. H. Hobbs.

President of Board of Benevolence—V.W. Bro. R. W. S. Eastwood.

Grand Directors of Ceremonies—V.W. Bro. J. Simpson, V.W. Bro. C. E. Dutton, V.W. Bro. H. G. Teagle, V.W. Bro. J. H. Moir.

Assistant Provincial Grand Masters—

Auckland—V.W. Bro. S. S. Allen.

Ruapehu—V.W. Bro. A. J. Graham.

Southland—V.W. Bro. E. C. Smith.

Senior Grand Deacons—W. Bro. A. C. McKillop, W. Bro. R. A. Gillespie.

Junior Grand Deacons—W. Bro. H. Y. Collins, W. Bro. H. V. Futter.

Grand Superintendents of Works—W. Bro. W. B. McEwan, W. Bro. J. B. Auld.

Grand Bible Bearers—W. Bro. A. Scott, W. Bro. J. M. Carnahan.

Grand Sword Bearers—W. Bro. J. R. Dreaver, W. Bro. E. B. B. Holben.

Grand Standard Bearers—W. Bro. M. McInnes, W. Bro. E. C. Hayton.

Grand Organist—W. Bro. J. C. Greer.

Grand Pursuivants—W. Bro. F. H. Hounsell, W. Bro. P. J. De La Mare.

Grand Stewards—W. Bro. F. L. Adams, W. Bro. J. D. Mackay, W. Bro. F. V. Carpenter, W. Bro. C. H. Dement, W. Bro. V. C. Robinson, W. Bro. S. F. Bridgman, W. Bro. R. P. Boyne, W. Bro. S. H. Snell, W. Bro. R. Shaw, W. Bro. A. G. Shrimpton, W. Bro. D. Kerr, W. Bro. D. B. Howard.

BOARD OF GENERAL PURPOSES.

(Meets on the second Thursday in each month, at 7.30 p.m. in the Offices of the Grand Lodge).

President—V.W. Bro. A. H. Hobbs.

Members ex-officio—M.W. Bro. John Rushworth, Viscount Jellicoe, G.M.; M.W. Bro. H. L. Michel, Pro G.M.; R.W. Bro. James Armstrong, Dep.G.M.; R.W. Bro. W. G. Hay, S.G.W.; R.W. Bro. J. K. Hornblow, J.G.W.; V.W. Bro. J. W. Hillary, G.Treas.; V. W. Bro. _____, G.Reg.; all P.G.Ms. and P.Pro G.Ms.; all P.Dep.G.Ms.; all Prov.G.Ms. and P.Prov.G.Ms.

Elected Members—V.W. Bro. W. Brown; W. Bros. G. Yemm, J. W. Beanland, A. C. Andrews, B. Falck, F. A. Read, R. J. McCausland, R. J. Shakes, R. A. Shore, J. C. Imlay, H. J. Fagan, M. Steffensen, A. Gibson, D. McGregor, R. H. Rockel.

BOARD OF BENEVOLENCE.

(Meets in the Offices of Grand Lodge, Christchurch, on the third Monday in each month (if required).

President—R.W. Bro. R. W. S. Eastwood.

Members ex-officio—M.W. Bro. John Rushworth, Viscount Jellicoe, G.M.; M.W. Bro. H. L. Michel, Pro G.M.; R.W. Bro. Jas. Armstrong, Dep.G.M.; V.W. Bro. J. W. Hillary, G.Treas.; V.W. Bro. T. H. Williams, G.Reg.; V.W. Bro. A. H. Hobbs, Pres. of B. of G.P.; all P.G.Ms. and P.Pro.G.Ms.; all P.Dep.G.Ms.; all Prov.G.Ms. and P.Prov.G.Ms.; the I.P.Pres. of the Board.

Elected Members—W. Bros. A. J. Allan, N. W. Taylor, J. Gillanders, G. Rutherford, R. J. Connal, G. H. French, W. F. Brooke Taylor, H. Hobbs, J. Pringle, L. L. Padget, W. Rees Jones, J. Rockell, W. Max, W. H. Shannon, R. N. Renaud, W. E. Kiddey, J. Hurley, M. Dorreen.

BOARD OF MANAGEMENT WIDOWS' AND ORPHANS' AND AGED MASONS' FUND, also SPECIAL (WAR) BENEVOLENT FUND.

Chairman—V.W. Bro. R. W. S. Eastwood.

Members—The members of the Boards of General Purposes and Benevolence (sitting together).

(Meets on the same night as the Board of Benevolence.)

TRUSTEES OF GRAND LODGE FUNDS AND PROPERTY.

M.W. Bro. J. J. Dougall.

M.W. Bro. S. C. Bingham.

R.W. Bro. Wm. McBride.

R.W. Bro. C. J. Ronaldson.

V.W. Bro. A. H. Hobbs.

COLONEL G. BARCLAY, P.G.W., Grand Secretary,
P.O. Box 649, Christchurch.

Telegrams: "Freemason," Christchurch.

Grand Lodge Office: 221 Manchester Street, Christchurch.

The charge for Advertising Lodges, with names of officers, times and places of meeting, etc., is £1 per annum, payable yearly, in advance. Secretaries are requested to send corrections, and notify alterations when necessary.

Lodges here given by name and number only do not advertise in the Journal.

NORTH ISLAND.

CRAFT LODGES.

(Under Grand Lodge of New Zealand).

PROVINCE OF AUCKLAND: 61 LODGES.

(W.M., BRO. O. Nicholson, P.G.M.)

Ara, 1:—Founded 1842, meets Freemasons' Hall, Princes St., Auckland, second Wed. (except Jan.), 7.30. Install. June. W.M., C. S. Lees; S.W., H. M. Rogerson; J.W., A. Burns; Sec., M. A. Benney, P.M., 23 Halston Rd., Mt. Eden, Auckland.

St. Andrew, 8:—Founded 1861, meets Freemasons' Hall, Princes St., Auckland, third Tues., 7.45. Install. July. W.M., J. W. Probert; S.W., H. French; J.W., A. Doel; Sec., J. P. McPhail, 43 Phoenix Chambers, Queen St., Auckland.

United Servie, 10:—Founded 1864, meets Freemasons' Hall, Princes St., Auckland, last Wed. 7.30. Install. June. W.M., A. W. T. Pooley; S.W., E. L. Harvie; J.W., A. V. Swales; Sec., M. Berry, P.M., 5 Kingsland Av., Mt. Albert, Auckland.

Beta-Waikato, 12:—Founded 1865, meets Masonic Hall, Hamilton, second Mon., 7.30. Install. Thurs. on or after 24th June. W.M., T. G. Reynolds; S.W., F. Vickery; J.W., A. W. Smith; Sec., C. Speight, P.M., Box 48, Hamilton.

Sir Walter Scott, 15:—Founded 1870, meets Freemasons' Hall, Mackay St., Thames, third Tues., 7.30. Install. March. W.M., R. M. Rhodes; S.W., J. Hogg; J.W., H. Crawford; Sec., J. H. Hodge, P.M., Rolleston St., Thames, Thames.

Coromandel, 17:—Founded 1872, meets Masonic Hall, Coromandel, nearest Wed. to full moon, 7.30. Install. Mar. W.M., C. J. Steel; S.W., J. W. Edgar; J.W., W. A. Midwinter; Sec., W. H. French, P.M., Driving Creek, Coromandel.

Manakau, 24:—Founded 1876, meets Masonic Hall, Princes St., Onehunga, first Wed., 7.30. Install. Mar. W.M., F. Walsh; S.W., F. Claydon; J.W., C. H. Barker; Sec., J. E. Cowell, P.M., Onehunga.

Albion, 45:—Founded 1883, meets Masonic Hall, Devonport, second Thurs., 7.30, except Jan. Install. June. W.M., C. H. Forte; S.W., V. V. Bremner; J.W., F. K. Lomas; Sec., J. E. Hammond, P.M., Victoria Av., Devonport.

Te Aroha, 52:—Founded 1884, meets Masonic Hall, Te Aroha, Thurs., nearest full moon, 7.30. Install. March. W.M., G. H. Deverell, P.M.; S.W., G. Gilchrist; J.W., E. C. Wykes; Sec., G. Hedge, P.M., Box 64, Te Aroha.

Ponsonby, 54:—Founded 1890, meets Freemasons' Hall, Princes St., Auckland, last Tues., 7.30. Install. first Tues. in July. W.M., A. S. Bailey; S.W., W. F. Fowlds; J.W., C. J. Lovegrove; Sec., C. E. Dutton, G.D.C., 406 Queen St., Auckland.

Wairoa, 55:—Founded 1884, meets Masonic Hall, Arthur St., Ellerslie, third Mon., 7.30. Install. April. W.M., E. McDonald; S.W., O. A. Darby; J.W., F. Alpe; Sec., E. D. Reid, 11 Ascot Av., Remuera.

Franklin, 55:—Founded 1885, meets Masonic Hall, Papakura, Tues. on or before full moon, 7.30. Install. April. W.M., F. J. Cossey; S.W., R. Dowling; J.W., J. B. Page; Sec., H. Willis, P.M., P.O., Papakura.

Papakura, 56:—Founded 1885, meets Masonic Hall, Pukekohe, second Mon., 7.30. Install. Nov. W.M., H. Bockett; S.W., J. Duncan; J.W., J. N. Massey; Sec., D. Jamieson, P.G.D., Pukekohe.

Hokianga, 69:—Founded 1891, meets Masonic Hall, Kohukohu, nearest Fri. to full moon, 7.30. Install. Feb. W.M., F. C. Hargrave; S.W., H. F. Thronsen; J.W., G. F. G. Millar; Sec., C. D. Melville, Box 27, Rawene.

Abercorn, 76:—Founded 1886, meets Masonic Hall, Ormond Rd., Gisborne, first Tues., 7.30. Install. Oct. W.M., V. C. R. Mitford; S.W., W. R. L. Williams; J.W., J. D. Smith; Sec., G. T. Bull, P.G.W., Box 208, Gisborne.

Mangonui, 78:—Founded 1892, meets Freemasons' Hall, Kaitiaki, Wed. nearest full moon, 7.30. Install. Feb. W.M., J. Black; S.W., C. E. Scott; J.W., W. Marsh; Sec., F. H. S. Matthews, P.M., Box 7, Kaitiaki.

Alpha, 81:—Founded 1881, meets Masonic Hall, Cambridge, third Wed., 7.30. Install. March. W.M., W. L. Cartmill; S.W., H. Benge; J.W., W. Moore; Sec., G. H. Bellamy, Box 26, Cambridge.

Auckland, 87:—Founded 1893, meets Masonic Hall, Eden Terrace, fourth Tues., 7.30. Install. last Sat. May. W.M., J. Balmer; S.W., A. F. Stone; J.W., A. L. Hume; Sec., W. S. Williams, P.M., 12 Wynyard Rd., Mt. Eden.

United Waluku, 90:—Founded 1903, meets Tues. nearest full moon, 7.30. Install. Feb. W.M., W. T. M. Watson; S.W., E. G. Burt; J.W., P. Quilter; Sec., J. D. Chalmers, Waiuku.

Ohaeawai, 101.

Whangarei 102:—Founded 1876, meets Freemasons' Hall, Walton St., Whangarei, second Mon., 7.30. Install. April. W.M., W. Reynolds; S.W., W. J. Bell; J.W., J. C. Reynolds; Sec., J. M. Dawson, P.M., Shortland St., Whangarei.

Ohinemuri, 107:—Founded 1896, meets Masonic Hall, Paeroa, Wed. on or before full moon, 7.30. Install. Nov. W.M., G. R. Davidson; S.W., N. C. Busby; J.W., D. McWatters; Sec., C. B. Gentil, P.M., Box 33, Paeroa.

Waihi, 112:—Founded 1889, meets Masonic Hall, Waihi, Mon. nearest full moon, 7.30. Install. April. W.M., A. Stapleton; S.W., Dushka; J.W., R. Henderson; Sec., E. M. Morgan, Seddon St., Waihi.

Taupiri, 118:—Founded 1900, meets Masonic Hall, Huntly, Wed. nearest full moon, 7.30. Install. Oct. W.M., E. W. Davey; S.W., D. C. Low; J.W., T. Ingram; Sec., F. Harris, P.M., Box 14, Huntly.

Waipa, 119:—Founded 1901, meets Masonic Hall, Te Awamutu, Wed. of full moon (or nearest Wed. after), 7.30. Install. Oct. W.M., W. Mensforth; S.W., A. E. Patterson; J.W., J. M. Spear; Sec., D. McArthur, Box 34, Te Awamutu.

Hobson, 120:—Founded 1901, meets Masonic Hall, Aratapu, Tues. on or before full moon, 7.30. Install. Jan. W.M., B. V. Rope; S.W., A. Rolfe; J.W., W. Dalbeth; Sec., J. Jackson, sen., P.M., Te Kopuru.

Tauranga, 125:—Founded 1901, meets Masonic Hall, First Avenue, Tauranga, third Wed., 7.30. Install. Nov. W.M., H. L. Jones; S.W., G. W. Henderson; J.W., R. Petherbridge; Sec., E. B. Hammond, P.M., Cameron Rd., Tauranga.

Hikurangi, 140:—Founded 1905, meets Masonic Hall, Hikurangi, Fri. on or before full moon, 7.30. Install. April. W.M., P. C. Cunnold; S.W., W. Bastas; J.W., W. Twisell; Sec., E. Richards, P.M., Hikurangi.

Rotorua, 153:—Founded 1907, meets Masonic Hall, Fenton St., Rotorua, Tues. nearest full moon, 7.30. Install. Aug. W.M., E. H. Robinson; S.W., F. D. Davies; J.W., P. Winterbottom; Sec., G. H. French, P.M., Box 79, Rotorua.

Piako, 160:—Founded 1908, meets Masonic Hall, Morrinsville, Wed. on or nearest full moon, 7.30. Install. Mar. W.M., W. Morrice; S.W., M. B. Mackenzie; J.W., D. R. F. Campbell; Sec., F. A. Pickett.

Plunket, 163:—Founded 1910, meets Masonic Hall, Te Kuiti, Wed. on or before full moon, 7.30. Install. April. W.M., Wm. McRae; S.W., A. S. Gresham; J.W., J. T. Dodds; Sec., J. A. Sparks, Box 43, Te Kuiti.

Karioi, 165:—Founded 1909, meets Masonic Hall, Raglan, second Fri., 7.30. W.M., A. Bentley; S.W., O. F. Wells; J.W., G. S. Fuller; Sec., C. W. Ralfe, P.O. Box 8, Raglan.

Tawhiri, 166:—Founded 1909, meets Masonic Hall, Kent St., Frankton Junction, first Tues., 7.30. Install. Nov. W.M., T. S. Webster; S.W., A. E. Webb; J.W., F. T. Innes; Sec., W. H. Patterson, P.M., 45 Victoria St., Hamilton.

United Masters, 167:—Founded 1909, meets last Thurs. each month (except Jan.) in Freemasons' Hall, Princes St., Auckland, 7.30. Install. Oct. W.M., M. Copeland, P.M.; S.W., G. A. Gribbin, P.G.W.; J.W., W. L. Harding, P.M.; Sec., D. B. Wallace, P.G.D., 21 Orakei Road, Remuera.

Maungawahao, 168:—Founded 1909, meets Masonic Hall, Woodside Rd., Mt. Eden, third Thurs., 7.30. Install. Nov. W.M., G. Johnston; S.W., W. H. Haslett; J.W., G. F. Lane; Sec., C. Semadeni, P.M., 11 Paice Avenue, Mt. Eden.

Marsden, 169:—Founded 1910, meets Masonic Hall, Maungaturoto, Thurs. nearest full moon, 7.30. Install. Feb. W.M., A. B. Cox; S.W., W. A. Grant; J.W., W. S. Wallace; Sec., W. J. Dell, P.M., Box 5, Maungaturoto.

Waitakeri, 170:—Founded 1910, meets Masonic Hall, Henderson, Wed. nearest full moon, 7.30. Install. March. W.M., A. Perris; S.W., R. Carey; J.W., W. Stevens; Sec., H. Paltridge, P.M., Rathgan Rd., Henderson.

Nau Mai, 177:—Founded 1910, meets Masonic Hall, Hakiha St., Taumarunui, first Wed., 7.30. Install. Nov. W.M., F. E. Otto; S.W., G. F. Thompson; J.W., R. H. Ross; Sec., A. E. Seaton, Box 9, Taumarunui.

Waipuu, 179:—Founded 1911, meets Masonic Hall, Waipuu, Tues. nearest full moon, 7.30. Install. April. W.M., F. McKay; S.W., D. Sutherland; J.W., R. R. Mackay; Sec., A. S. Boldero, P.M., P.O., Waipuu.

Onewa, 182:—Founded 1911, meets Masonic Hall, Northcote, last Mon. (Dec. excepted), 7.30. Install. last Mon. May. W.M., G. W. Lewis; S.W., K. Smith; J.W., H. W. Tyer; Sec., J. P. Verran, P.M., Brassey Rd., Birkenhead.

Te Marama, 186:—Founded 1911, meets Masonic Temple, Ngarawahia, first Mon., 7.30. Install. Oct. W.M., Allan H. Cameron; S.W., A. Brewer; J.W., T. A. Clayton; Sec., H. M. Thorpe, P.G.D., Box 63, Ngarawahia.

Tirau, 193:—Founded 1913, meets Masonic Hall, Tirau, Wed. nearest full moon, 7.30. Install. April. W.M., S. J. Parker; S.W., P. Dec; J.W., R. D. Thorpe; Sec., J. R. O. Lochhead, Putaruru.

Whakatane, 198:—Founded 1914, meets Masonic Hall, Whakatane, Fri. on or before full moon, 7.30. Install. Aug. W.M., H. J. Ryde; S.W., W. R. Sloane; J.W., J. A. Ruddy; Sec., P. Pridoux, Whakatane.

Takapuna, 202.

Pono, 203:—Founded 1915, meets Masonic Hall, Hokiangra Rd., Dargaville, Thurs. after full moon, 7.30. Install. Sept. W.M., A. Costello; S.W., S. G. Chaplin; J.W., J. Capper; Sec., C. S. Rush, P.M., Box 96, Dargaville.

Titirangi, 204:—Founded 1915, meets Masonic Hall, Rosebank Rd., Avondale, second Tues., 7.30. Install. Sept. W.M., G. Cordes; S.W., W. J. Thompson; J.W., R. Ward; Sec., J. B. Barlow, Myers Rd., Avondale.

Maniapoto, 206:—Founded 1916, meets Masonic Hall, Otorohanga, Tues. on or before full moon, 8. Install. Oct. W.M., H. G. Corbett; S.W., J. Budge; J.W., W. Rust; Sec., R. R. Morton, Box 45, Otorohanga.

Ruawai, 207:—Founded 1917, meets Masonic Hall, Ruawai, Fri. on or before full moon, 7.30. Install. Jan. W.M., J. B. Craven; S.W., W. P. Fitness; J.W., R. Finlayson; Sec., J. R. Bayliss, Ruawai.

Ohura, 214:—Founded 1920, meets Lodge-room, Ohura, Fri. nearest full moon, 8. Install. Feb. W.M., F. S. MacClure; S.W., C. V. Smith; J.W., G. Bleasel; Sec., A. M. Tovey-Tennant, Box 8, Ohura.

Taneatua, 220:—Founded 1921, meets Freemasons' Hall, Taneatua, Tues. nearest full moon, 7.30. Install. Aug. W.M., E. W. Bryenton; S.W., C. Old; J.W., W. H. Richardson; Sec., J. W. McPeake, Box 31, Taneatua.

Manurewa, 222:—Founded 1921, meets Lodge-room, Manurewa Theatre, Thurs. nearest full moon, 7.30. Install. May. W.M., P. A. Nield; S.W., T. J. Corin; J.W., C. Hawthorne; Sec., W. Roberts, care N.Z.R., Manurewa.

Papatoetoe, 227:—Founded 1921, meets third Thurs., 8. Public Hall, Station Rd., Papatoetoe. Install. Dec. W.M., W. J. Jordan; S.W., H. P. Andrew; J.W., J. Buchanan; Sec., Bro. R. Henderson, Papatoetoe.

Morningside, 228:—Founded 1921, meets Hirst's Hall, Morningside, second Mon., 7.30. Install. Nov. W.M., W. H. Keatley; S.W., W. Simmonds; J.W., J. S. Palmer; Sec., T. S. Miller, Gleeson's Buildings, High St., Auckland.

Uawa, 232.

Gisborne, 233:—Founded 1922, meets Masonic Hall, Childer's Rd., Gisborne, fourth Tues., 7.30. Install. Feb. W.M., W. Ogilvie; S.W., H. J. Edwards; J.W., H. A. Armstrong; Sec., A. Stoneham, P. Prov. G.M., Box 25, Gisborne.

Waipuu, 241:—Founded 1922, meets Masonic Hall, Tokomaru Bay, Fri. nearest full moon, 7.30. Install. Oct. W.M., F. V. Carpenter; S.W., P. J. R. Fordham; J.W., R. C. Schofield; Sec., H. H. Fairlie, Box 13, Tokomaru Bay.

St. James, 244:—Founded 1923, meets Public Hall, Drury, Mon. on or after full moon, 7.30. Install. Mar. W.M., A. Wright; S.W., T. L. Currie; J.W., J. Gordon; Sec., G. M. Scott.

Arapohue, 248:—Founded 1923, meets Public Hall, Mititai, Mon. on or nearest full moon, 7.30. Install. Jan. W.M., A. A. Todd; S.W., W. J. Ellison; J.W., W. B. Frost; Sec., C. C. Todd, Mititai, Northern Wairoa.

Hauraki Plains, 249:—Ngatea.

Calliope, 252:—Founded 1923, meets Masonic Temple, Apia, Thurs. nearest full moon, 7.30. Install. Aug. W.M., H. L. Halliday; S.W., G. S. Warren; J.W., A. G. Smyth; Sec., F. J. Lewer, Box 36, Apia.

Te Puke, 261—Founded 1924, meets McDowell's Hall, Te Puke, fourth Wed., 7.30. Install. Feb. W.M., G. W. Brown; S.W., A. B. Mollgaard; J.W., A. S. Warner; Sec., W. E. Hookey, Box 36, Te Puke.

Irish Constitution.

Ara, 348, I.C.—Founded 1842, meets Freemasons' Hall, Princes St., Auckland, first Mon. (Jan. and Feb. excepted), 7.30. Install. June (St. John's Day), high noon. W.M., W. E. Hedditch; S.W., H. M. Smith; J.W., A. I. McFarlane; Sec., R. J. Lusher, P.M., 2 Market Rd., Remuera.

Arohanui, 264—Grey Lynn.

PROVINCE OF HAWKES BAY: 12 LODGES.

(R.W. Bro. J. W. Ritchie, Prov. G.M.)

Seindo, 5—Founded 1858, meets Masonic Hall, Tennyson St., Napier, third Tues. Install. Wed. following third Tues. in June. W.M., W. J. Simkin; S.W., G. P. Tudehope; J.W., L. Wood; Sec., L. Freedman, P.G.D., Box 109, Napier.

Victoria, 21—Founded 1875, meets Masonic Hall, Munroe St., Napier, first Tues. (except Jan.), 7.30. Install. first Wed. in June. W.M., J. Rockell, P.M.; S.W., F. R. Lee; J.W., R. E. Arroll; Sec., H. A. Whitton, P.M., Box 253, Napier.

Bedford, 25—Founded 1878, meets Masonic Hall, Waipukurau, first Wed., 7.30. Install. April. W.M., J. Warren; S.W., E. E. Jones; J.W., L. J. Taylor; Sec., E. C. Hurdfield, Box 58, Waipukurau.

Abercorn, 30—Founded 1878, meets Masonic Hall, Waipawa, third Mon., 7.30. Install. third Wed. in Mar. W.M., W. S. Thackeray; S.W., S. W. Strang; J.W., F. Holt; Sec., E. E. Bott, P.M., Waipawa.

Rawhiti, 66—Founded 1890, meets Freemasons' Hall, High St., Dannevirke, third Thurs., 7.30. Install. May. W.M., J. K. Gilmour; S.W., J. Livingston; J.W., A. H. Ross; Sec., C. A. Mears, High St., Dannevirke.

Heretaunga, 73—Founded 1878, meets Masonic Hall, Hastings, second Tues., 7.30. Install. second Wed. in July. W.M., R. R. Waugh; S.W., C. S. Palmer; J.W., A. W. Parkinson; Sec., J. H. Colbourne, P.M., Box 62, Hastings.

Ruahine, 80—Founded 1886, meets Masonic Hall, Woodville, Tues. on or before full moon, 7.30. Install. fourth Wed. in June. W.M., G. W. Wardrop; S.W., W. Galbraith; J.W., J. Pearson; Sec., R. A. Offwood, P.M., Woodville.

Lion, 114—Founded 1890, meets Masonic Hall, Ormondville, Mon. or on nearest full moon, 7.30. Install. third Wed. in April. W.M., — Barclay; S.W., A. Cantwell; J.W., — Bowden; Sec., D. Wilson, P.G.S., Box 12, Ormondville.

Puketoi, 149—Founded 1907, meets Masonic Hall, Pongoroa, Wed. nearest full moon, 7.30. Install. Feb. W.M., G. Cox; S.W., T. Hopcroft; J.W., P. R. Kent; Act.-Sec., W. Lunt, Route 4, Dannevirke.

Waikaremoana, No. 153—Founded 1909, meets Masonic Hall, Wairoa, H.B., second Tues., 7.30. Install. Dec. W.M., R. M. Motwa; S.W., F. T. Ager; J.W., J. Boyd; Sec., T. S. Crarer, Wairoa, H.B.

Ruataniwha, 172—Founded 1910, meets Masonic Hall, Takapau, last Fri., 7. Install. third Wed. in Aug. W.M., F. H. Hillier; S.W., R. Meredith; J.W., T. Balfour; Sec., E. Johnston, P.M., Takapau.

Omarunui, 216—Founded 1920, meets Masonic Hall, Taradale, second Wed. 7.30. Install. March. W.M., P. C. B. Swansinger; S.W., W. W. Brooks; J.W., A. B. Davis; Sec., W. G. Jarvis, P.M., "Abbeywood," Greenmeadows.

PROVINCE OF TARANAKI: 10 LODGES.

(R.W. Bro. T. C. Fookes, Acting-Prov. G.M.)

Patea Kil, 18—Founded 1870, meets Masonic Hall, second Wed., 7.30. Install. March. W.M., F. W. Hamel; S.W., N. C. Harding; J.W., S. J. Hird; Sec., E. C. Wood, P.M., Box 46, Patea.

Hawera, 34—Founded 1880, meets Masonic Temple, Union St., Hawera, first Tues., 7.30. Install. July. W.M., R. G. Cuming; S.W., F. G. Hancock; J.W., J. M. Westaway; Sec., H. D. Caplin, Box 125, Hawera.

Ngamotu, 45—Founded 1888, meets Masonic Hall, Robe St., New Plymouth, fourth Wed. (except Dec., second Thurs.), 7.30 p.m. Install. Sept. W.M., A. L. B. Ross; S.W., A. E. Washer; J.W., A. U. Woollett; Sec., C. H. Wyatt, Gover St., New Plymouth.

Stratford, 75—Founded 1888, meets Masonic Hall, Stratford, third Wed., 7.30. Install. Mar. W.M., E. Carrier; S.W. J. C. Robins; J.W., D. Steven; Sec., J. McAlister, Box 103, Stratford.

St. John's, 95—Founded 1892, meets Masonic Hall, Eltham, third Tues., 7.30. Install. Feb. W.M., R. H. Free; S.W., T. Hodgen; J.W., H. Whittington; Sec., H. G. McDonald, Box 65, Eltham.

Moa, 110—Founded 1896, meets Freemasons' Hall, Inglewood, second Fri., 7.30. Install. Mar. W.M., G. H. Taylor; S.W., Geo. Farquhar; J.W., L. J. Carmine; Sec., Jas. Roberts, P.M., Inglewood.

Ikaroa, 115—Founded 1899, meets Masonic Hall, Opunake, Tues. nearest full moon, 7.30. Install. Nov. W.M., J. Hewson; S.W., W. Tait; J.W., F. J. Young; Sec., G. W. Rogers, P.G.W., Box 19, Opunake.

Kaponga, 208—Founded 1918; meets Parish Hall, Kaponga, fourth Mon., 7.30. Install. Aug. W.M., W. H. L. Roberts; S.W., Gardner; J.W., D. Barlow; Sec., J. Hessel, Box 3, Kaponga.

Whangamomona, 234—Founded 1922; meets Thurs. nearest full moon, Oddfellows' Hall, 7.30. Install. Mar. W.M., E. Jenkinson; S.W., J. M'Gillivray; J.W., C. Riley; Sec., D. B. Howard, P.M., P.O., Kohuratahi.

Taranaki, 240—Founded 1922, meets Masonic Temple, Union St., Hawera, third Thurs. in month, 7.30. Install. May. W.M., J. C. Barclay; S.W., T. G. Liddington; J.W., A. J. Ching; Sec., G. Roberts, 1 Union St., Hawera.

RUAPEHU DISTRICT: 19 LODGES.

(R.W. Bro. W. Haydon M'Lean, Prov. G.M.)

Rangitikei, 38—Founded 1880, meets Masonic Hall, Bulls, Tues. before full moon, 7.30. Install. Oct. W.M., W. D. Carson; S.W., G. W. Smith; J.W., J. Cockburn; Sec., F. G. H. Wilson, Bulls.

Feilding, 41—Founded 1881; meets Masonic Temple, Feilding, second Mon. Install. July. W.M., W. E. Carthew; S.W., A. H. Sutton; J.W., H. Wilkinson; Sec., R. F. Haybittle, Box 58, Feilding.

Manawatu Kil, 47—Founded 1883, meets Masonic Hall, Church St., Palmerston North, second Thurs., 7.30. Install. April. W.M., W. R. Douglas; S.W. W. P. Henderson; J.W., W. H. Boon; Sec., C. D. Fraser, Box 94, Palmerston North.

Otagaki, 70—Founded 1891; meets Masonic Hall, Ashhurst, Wed. nearest full moon, 7.30. Install. Aug. W.M., W. G. S. Romley; S.W., H. W. Lacey; J.W., J. Kershaw; Sec., P. J. P. Tulloch, Bunnythorpe.

Rangitira, 71—Founded 1891; meets Masonic Hall, Hunterville, Rangitikei, Fri. on or before full moon. Install. Mar. W.M., L. J. Thompson; S.W., I. C. Bartlett; J.W., G. M' Rae; Sec., R. M. S. Jones, Hunterville.

St. Andrew Kil, 79—Founded 1866, meets Freemasons' Hall, Wanganui, second Thurs. 7.30 (excepting Dec., first Thurs.; and Jan., no meeting. Install. second Thurs. July. W.M., J. J. Meuli; S.W., J. A. Inkster; J.W., A. A. Barton; Sec., N. G. Armstrong, Box 236, Wanganui.

Kimbolton, 123—Founded 1902; meets Masonic Hall, Kimbolton, Thurs. nearest full moon, 7.30. Install. Feb. W.M., R. H. T. W. Southey; S.W., G. Taverdale; J.W., W. Scott; Sec., H. F. W. Hansen, P.M., Box 11, Kimbolton.

Ruapehu, 128—Founded 1885; meets Masonic Hall, Marton, second Thurs., 7.30. Install. Feb. W.M., J. D. Gorrie; S.W., S. Whitehead; J.W., J. A. Bush; Sec., J. Mogrige, P.M., Stationer, Marton.

Te Awahou, 133—Founded 1906; meets Masonic Hall, Liddle St., Foxton, second Tues., 7.30. Install. May. W.M., R. Rangihenia; S.W., G. Alexander; J.W., D. Campbell; Sec., J. Ross, P.M., Box 7, Foxton.

Otaihape, 142—Founded 1905; meets Masonic Hall, Taihape, Tues. on or before full moon, 7.45. Install. May. W.M., W. F. Stent; S.W., W. McCombie; J.W., C. Henrichs; Sec., A. Leighton, 83 Tautapu St., Taihape.

Rongotea, 146—Founded 1906; meets Masonic Hall, Rongotea, Wed. before full moon, 7.30. Install. July. W.M., W. J. Croucher; S.W., J. Currie; J.W., T. M'Gee; Sec., C. W. Liggins, Rongotea.

Huia, 171—Founded 1910, meets Masonic Hall, Church St., Palmerston North, first Thurs., 7.30. Install. Mar. W.M., H. G. Fletcher; S.W., M. J. Millar; J.W., J. R. T. Slipper; Sec., S. W. Oliver, P.M., Box 214, Palmerston North.

Waimarino, 175—Founded 1910; meets Masonic Hall, Ward St., Raetihi, Mon. nearest full moon, 7.30. Install. Oct. W.M., W. H. Sandford; S.W., M. A. Johansen; J.W., F. Todd; Sec., W. M'Leod, Seddon St., Raetihi.

Manga-te-Weka, 178—Founded 1910, meets Masonic Hall, Mangaweka, Mon. on or before full moon, 8. Install. June. W.M., S. A. Meads; S.W., D. T. Cooper; J.W., F. H. Thompson; Sec., D. Galloway, P.M., Mangaweka.

Moutoa, 195—Founded 1913; meets Masonic Hall, Gonville, fourth Thurs (excepting Dec., third Thurs.). Install. fourth Thurs. in April. W.M., E. Senior; S.W., W. B. Allan; J.W., F. Hayward; Sec., F. Symes, 144 Victoria Av., Wanganui.

Ngauruhoe, 205—Founded 1916, meets Masonic Hall, Miro St., Ohakune, Tues. nearest full moon, 7.30. Install. May. W.M., C. P. Bates; S.W., E. O. Lightband; J.W., M. H. Morris; Sec., E. Larkin, P.M., Box 30, Ohakune.

Oroua, 215—Founded 1920; meets Oddfellows' Hall, Apiti, Tues. nearest full moon, 7.30. Install. April. W.M., G. Cowan; S.W., H. W. Watson; J.W., T. Nix; Sec., P. McKay, P.O., Apiti.

Whanganui, 219—Founded 1920; meets Masonic Hall, Bell St., fourth Mon. (Dec. and Jan. excepted). Install. May. W.M., W. T. Ridd; S.W., F. H. Allen; J.W., L. J. B. Chapple; Sec., L. J. Verry, P.M., Box 398, Wanganui.

Awatea, 258—Founded Jan., 1924; meets Masonic Temple, Church St., Palmerston N., last Sat. in month, Dec. excepted. Install. Mar. W.M., E. V. West; S.W., J. W. W. Beale; J.W., G. W. Ashworth; Sec., E. H. Jamieson, Box 344, Palmerston North.

PROVINCE OF WELLINGTON: 37 LODGES.

(R.W. Bro. G. Russell, Prov. G.M.)

N.Z. Pacific, 2—Founded 1842; meets Masonic Hall, Boulcott St., Wellington, fourth Mon., 7.30 p.m. No meeting Dec. Install. Mar. W.M., B. T. Blake; S.W., T. Hills; J.W., A. C. Carter; Sec., J. Hutchings, P.M., Box 386, Wellington.

Waterloo, 13—Founded 1866, meets Masonic Hall, Boulcott St., Wellington, second Mon., 7.30. Install. Sept. W.M., J. E. Dawson; S.W., C. N. Cathie; J.W., R. K. G. Hardie; Sec., A. Erskine, Box 466, Wellington.

Masterton, 19—Founded 1878, meets Masonic Hall, Bannister St., Masterton, second Wed., 8. Install. third Thurs. in May. W.M., E. H. Morton; S.W., W. H. Judd; J.W., J. V. Gordon; Sec., F. J. Hunn, P.G.D.C., 128 Dixon St., Masterton.

St. Andrew, 32—Founded 1879, meets Masonic Hall, Boulcott St., Wellington, third Mon., 7.30. Install. Nov. (St. Andrew's Day). W.M., W. J. Scammell; S.W., W. T. Johnson; J.W., E. E. Moyes; Sec., Geo. Cameron, P.M., Box 661, Wellington.

St. John, 37—Founded 1873. Meets Masonic Hall, Wakefield St., Featherston, second Mon., 7.30. Install. Oct. W.M., G. A. Vincent; S.W., J. Cross; J.W., H. Lawson; Sec., C. W. Ritchie, Box 39, Featherston.

Leinster, 44—Founded 1882, meets Masonic Hall, Boulcott St., Wellington, first Mon., 7.30. Install. July. W.M., E. A. Thompson; S.W., T. H. Wilson; J.W., G. A. Jamieson; Sec., A. McLaren, P.M., 126 Austin St., Wellington.

St. Mark, 52—Founded 1884, meets Freemasons' Hall, Carterton, second Tues., 7.30. Install. April (St. Mark's Day). W.M., J. Stringer; S.W., W. H. Bredin; J.W., R. Leith; Sec., Arthur Phillipott, P.M., Box 7, Carterton.

Uister, 62—Founded 1887, meets Masonic Hall, Petone, third Wed. 7.30. Install. third Sat. in June. W.M., B. Tremain; S.W., L. Blacker; J.W., J. Mason; Sec., W. H. Melhuish, 49 Britannia St., Petone.

Tararua, 67—Founded 1890, meets Masonic Hall, Pahiatua, Thurs. nearest full moon, 7.30. Install. Nov. W.M., W. R. Richardson; S.W., J. J. Boagay; J.W., L. T. Herbert; Sec., W. H. Purdie, Main St., Pahiatua.

Otaki, 72—Founded 1891, meets Masonic Hall, Otaki, Wed. nearest full moon, 8 (Sept. meeting Tues.). Install. Nov. W.M., F. W. Box; S.W., T. B. Bax; J.W., Y. Bills; Sec., H. Freeman, P.M., Riverbank Rd., Otaki.

Greytown, 74—Founded 1877, meets Masonic Hall, Greytown, fourth Tues., 8. Install. June (St. John's Day). W.M., R. W. Beu; S.W., C. T. Lord; J.W., G. H. Scrimgeour; Sec., A. K. Hansen, P.M., Moroa, Greytown.

Eketahuna, 92—Founded 1885, meets Masonic Hall, Bengston St., Eketahuna, second Fri. (except May). Install. second Thurs., 7.30. W.M., J. Metcalfe; S.W., T. Bedding; J.W., L. Houlbrooke; Sec., F. E. Grinlinton, Main St., Eketahuna.

Hinemoa, 122—Founded 1901, meets Masonic Temple, Donald M'Lean St., Wellington South, second Thurs., 7.30. Install. Aug. W.M., E. Vine; S.W., J. M'Ardele; J.W., E. B. Tamplin; Sec., S. T. S. Martin, P.M., 11 Millward St., Wellington South.

Coronation, 127—Founded 1902, meets Masonic Hall, Johnsonville, Sat. on or before full moon, 7.30. Install. Nov. W.M., R. Turner, P.M.; S.W., A. D. Sloane; J.W., H. B. Wolf; Sec., G. C. Boyes, Wakefield Road, Johnsonville.

Brooklyn, 132—Founded Oct., 1903, meets Masonic Hall, Brooklyn, first Wed., 7.30. Install. Oct. W.M., L. H. Hartley; S.W., J. T. Goldsmith; J.W., Bro. J. Parkin; Sec., T. I. Webster, Fortunatus St., Brooklyn.

Horowhenua, 135—Founded 1906, meets Masonic Temple, Stanley St., Levin, Thurs. nearest full moon, 8. Install. Wed. nearest in Sept. W.M., E. S. Lancaster; S.W., W. B. Macintosh; J.W., W. Greggan; Sec., R. J. Foss, P.M., Oxford St., Levin.

Waihanga, 150—Founded 1907, meets Masonic Hall, Martinborough, first Wed., 7.30. Install. Oct. W.M., W. Roper; S.W., R. P. George; J.W., F. T. Arkle; Sec., A. McGregor, P.M., Box 12, Martinborough.

Tutanekai, 156—Founded 1908, meets Masonic Hall, Adelaide Rd., Berhampore, first Thurs. (except Jan., second Thurs.), 7.30. Install. Feb. W.M., T. Jones; S.W., J. McIntosh; J.W., A. Barn; Sec., J. P. Shand, P.M., 129 Cuba St., Wellington.

Waiwhetu, 176—Founded 1906, meets Masonic Hall, Huia St., Lower Hutt, second Wed., 7.30. Install. Oct. W.M., A. Burgess; S.W., T. H. McIntyre; J.W., W. B. Hardy; Sec., J. McLaughlan, P.M., Pretoria St., Lower Hutt.

Otari, 190—Founded 1912, meets Freemasons' Hall, Nairnville, Ngāio, second Tues., 7.30. Install. July. W.M., C. Colpus; S.W., V. E. Johansen; J.W., L. L. Hills, P.M.; Sec., E. Meek, P.M., Te Kainga, Khandallah.

Research Lodge of Wellington, 194—Founded 1912, meets Freemasons' Hall, Boulcott St., first Tues. Nov., *Feb., *April, *June, *Aug., *Oct. Install. Oct. W.M., R. H. Webb; S.W., B. E. Murphy; J.W., A. G. Cate; Sec., A. Schmidt, P.M., 247 The Parade, Island Bay. (*Open to visiting M.M.s.)

Whetu Kairangi, 201—Founded 1914, meets Masonic Hall, Seaton, second Sat., 7 (Nov. to May inclusive, 7.30). Install. Oct. W.M., T. H. R. Boon; S.W., R. G. Huggins; J.W., S. M. Stone; Sec., T. S. Robertson, P.M., Seaton Heights Rd., Seaton.

Mokoia, 213—Founded 1919, meets Masonic Hall, Daniel St., Wellington South, fourth Tues., 7.30. Install. first Sat. in Dec. W.M., R. Binns; S.W., J. Harlen; J.W., J. F. Rockstrom; Sec., C. A. Cook, 16 Kuapapa Rd., Northland.

Eastbourne, 217—Founded 1920, meets Masonic Hall, Main Rd., Eastbourne, fourth Wed., 7.30. Install. Aug. W.M., A. C. H. Beu; S.W., H. Wright; J.W., A. W. Clulce; Sec., C. A. Willis, care G. Thomson, P.O., Eastbourne.

Renown, 218—Founded 1920, meets Freemasons' Hall, Boulcott St., Wellington, fourth Thurs., 7.30. Install. Nov. W.M., M. S. Martin; S.W., J. Melville; J.W., L. Quinlan; Sec., R. Laurie, P.M., 13 Everton Terrace, Wellington.

Raukawa, 224—Founded 1921, meets Masonic Hall, Boulcott St., Wellington, first Wed. Install. July. W.M., A. C. Turnbull; S.W., L. Williams; J.W., A. H. L. Treadwell; Sec., R. Witherford, 84 Fairlie Terrace, Kelburn.

Empire, 225—Founded 1921, meets Masonic Hall, Boulcott St., Wellington, second Tues., 7.30. Install. Aug. W.M., O. C. Mazengarb; S.W., W. Johnstone; J.W., V. R. Earnshaw; Sec., T. C. Ward, P.O. Box 281, Wellington.

Taia, 229—Founded 1921, meets Masonic Temple, Donald McLean Street, Wellington South, first Sat., 7.30. Install. Feb. W.M., L. D. Paterson; S.W., W. D. Rough; J.W., H. Wade; Sec., S. L. Hall, 46, Rodrigo Rd., Kilbirnie, or "Evening Post."

Mangahao, 231—Founded 1922, meets Parish Hall, Shannon, third Mon., at 8. Install. May. W.M., G. E. Murphy; S.W., C. H. Speirs; J.W., A. F. Stewart; Sec., G. G. Mitchell, Box 19, Shannon.

Wairarapa, 238—Founded 1922, meets Masonic Hall, Bannister St., Masterton, fourth Wed., 7.30. Install. March. W.M., J. Kerr; S.W., N. R. Brown; J.W., F. Mason; Sec., R. Hanna, P.M., Box 39, Masterton.

Island Bay, 243—Founded 1922, meets St. Hilda's Hall, Island Bay, first Tues., 7.30. W.M., C. C. Odlin; S.W., A. F. Barnes; J.W., J. A. Campbell; Sec., A. T. Wells, P.M., 28 Tiber St., Island Bay.

Karori, 247—Founded 1923, meets St. Mary's Church Hall, Karori, last Sat. W.M., H. W. Johnson; S.W., G. B. Dixon; J.W., C. W. Sandford; Sec., G. D. James, Box 1420, Wellington.

Waitangi, 251—Founded May, 1923, meets Hinemoa Masonic Temple, Wellington South, first Mon. each month. W.M., T. F. Foley; S.W., F. M. J. Jenkins; J.W., P. W. C. Dement; Sec., W. C. Collier, 37 Derwent St., Island Bay, Wellington.

Tawera O Kapiti, 253—Founded 1923, meets Paraparaumu, Tues. nearest full moon, 7.30. Install. July. W.M., J. D. Howell; S.W., W. H. Potts; J.W., —; Sec., A. J. Petherick, Box 16, Paraparaumu.

Russell, 254—Founded 1923, meets Masonic Hall, Donald McLean St., Wellington South, first Thurs., 7.30. W.M., W. J. Courtney Greer; S.W., H. H. Flanagan; J.W., W. Bailey; Sec., L. C. Gibbins, Box 267, Wellington.

Jellicoe, 259—Founded 1924, meets Orange Hall, Elizabeth St., Petone, second Tues., 7.30. Install. —. W.M., R. W. M'Villy; S.W., G. Wilson; J.W., J. W. Longman; Sec., A. E. Frost, 25 Buick St., Petone.

Trentham, 262—Consecrated 5th April, 1924, meets Oddfellows' Hall, Main Rd., Trentham, third Thursday each month, at 7.30 p.m. W.M., A. Johnson; S.W., J. P. Blyth; J.W., F. H. Thornton; Sec., T. M. Milligan, Main Rd., Heretaunga, Hutt County.

SOUTH ISLAND.

MARLBOROUGH AND NELSON: 8 LODGES.
(R.W. Bro. R. P. Furness, Prov. G.M.)

Victory, 40—Founded 1881, meets Freemasons' Hall, Collingwood St., Nelson, second Thurs. (except May, fourth Thurs.), 7.30. Install. May. W.M., L. M. Estcourt; S.W., C. M. Collins; J.W., P. W. Harrold; Sec., R. W. Stiles, P. Prov. G.M., Box 105, Nelson.

Wairau, 42—Founded 1881, meets Masonic Hall, Andrew St., Blenheim, fourth Tues., 7.30. Install. June. W.M., A. W. O. Renner; S.W., J. J. McFarlane; J.W., R. Reid; Sec., W. C. Lucas, Redwood St., Blenheim.

Havelock, 104—Founded 1896, meets Masonic Hall, Havelock, third Fri., 7.30. Install. Mar. W.M., H. F. Pickett; S.W., S. G. Buckman; J.W., J. Kennington; Sec., V. N. Granville, P.M., Havelock.

Marlborough Unanimity, 106—Founded 1899, meets Masonic Hall, Charles St., Blenheim, second Tues., 7.30. Install. Aug. W.M., A. C. Nathan; S.W., A. M. Thomson; J.W., G. Mitchell; Sec., T. F. Bull, P.M., Box 3, Blenheim.

Waitohi, 111—Founded 1897, meets Masonic Hall, Pictou, last Fri., 7.30. Install. April. W.M., W. McP. Mutton; S.W., O. E. Barron; J.W., G. M. Blizzard; Sec., T. W. Bragge, P.M., Wairau Rd., Pictou.

Forest, 116—Founded 1898, meets Masonic Hall, Wakefield, third Wed. Install. Nov. W.M., H. Tunnickiff; S.W., J. A. Phelan; J.W., F. C. Page; Sec., H. C. Fitzsimmons, P.M., Wakefield.

Motueka, 117—Founded 1900, meets Masonic Hall, Motueka, Wed. nearest full moon, 7.30. Install. Oct. W.M., R. H. Shaw Thompson; S.W., F. Knapp; J.W., J. Brough; Sec., J. Jenkinson, Box 31, Motueka.

St. Cuthbert's, 144—Founded 1905, meets Masonic Hall, Collingwood, Sat. nearest full moon, 7.30. Install. Oct. W.M., R. E. Heenan; S.W., W. J. Graham; J.W., C. H. Curran; Sec., P. V. M'Nabb, Collingwood.

Murchison, 257—Murchison.

PROVINCE OF WESTLAND: 12 LODGES.
(R.W. Bro. F. C. Wade, Prov. G.M.)

Robert Burns, 50—Founded 1883, meets Burns' Masonic Hall, Kelly St., Reefton, third Thurs., 7.30. Install. 25th Jan. W.M., W. N. Prentice; S.W., J. Banks; J.W., R. A. Thomas; Sec., J. B. Auld, P.M., Reefton.

Advance, 61—Founded 1871, meets Masonic Hall, Taylorville, Brunner, first Thurs., 7.30. Install. last Thurs. in Jan. W.M., W. Dando; S.W., W. Angel; J.W., F. Bousbridge; Sec., J. Watson, Brunner.

Kumara, 65—Founded 1889, meets Freemasons' Hall, Seddon Street, Kumara, Tues. nearest full moon, 8. Install. Feb. W.M., John Hurren; S.W., Herbert A. M'Nabb; J.W., William Stewart; Sec., Walter H. Evenden, P.M., Kumara.

Westland, Kil., 88—Founded 1867, meets Freemasons' Hall, Hokitika, Wed. nearest full moon, 7.30. Install. St. Andrew's Day, W.M., T. A. Ecclesfield; S.W., H. Lawn; J.W., A. W. Vogan; Sec., W. E. Richards, Box 79, Hokitika.

Aorangi, 89—Founded 1893, meets Masonic Hall, Denniston, first Wed., 7. Install. April. W.M., L. V. D. Peacock; S.W., A. E. Wishart; J.W., L. Johnstone; Sec., P. Samley, Denniston Hill, Westport.

Mokihinui, 96—Founded 1896, meets Masonic Hall, Seddonville, first Sat. 7.30. Install. Dec. W.M., T. Brownlie; S.W., L. C. Voyce; J.W., J. M'Farlane; Sec., Bro. T. Quinn, P.M., Waimarie.

Torea, 121—Founded 1900, meets Masonic Hall, Granity, third Sat., 7.30. Install. Dec. W.M., S. Campbell; S.W., A. Nicholls; J.W., A. A. G. Kerr; Sec., A. B. Franklin, P.M., Ngakawau.

Mawhera, 136—Founded 1904, meets Masonic Hall, Tainui St., Greymouth, second Thurs., 7.30. Install. Nov. W.M., J. M'Indoe; S.W., T. A. W. Tate; J.W., N. A. Gandell; Sec., A. J. Aitken, Box 157, Greymouth.

Kawatiri-Westport 152—Founded 1907, meets Masonic Hall, Russell St., Westport, second Mon., 8. Install. May. W.M., J. Rose; S.W., S. Strachan; J.W., R. M. McDonagh; Sec., H. Greenwood, P.M., Russell St., Westport.

Runanga, 159—Founded 1908, meets Masonic Hall, Seddon St., Runanga, Wed. nearest full moon, 7.30. Install. Oct. W.M., D. M'Yvor; S.W., A. J. Boddy; J.W., C. Strongman; Sec., J. Rowse, P.M., Runanga.

Waro, 173—Founded 1910, meets Oddfellows' Hall, Hilton St., Blackball, Tues. nearest full moon, 7.30. Install. June. W.M., J. Neilson; S.W., R. Lowe; J.W., S. B. Burdon; Sec., W. Richardson, Main St., Blackball.

Connaught, 187—Founded 1911, meets Masonic Hall, Karamea, Wed., on or first after full moon, 7.30. Install. Dec. W.M., F. W. Musson; S.W., C. Jones; J.W., W. Duncan; Sec., W. C. Alley, P.M., Market Cross, Karamea.

PROVINCE OF CANTERBURY: 41 LODGES.
(R.W. Bro. W. M'Brice, Prov. G.M.)

Unanimity, 3—Founded 1851, meets Masonic Hall, Sumner road, Lyttelton, first Tues., 7.30. Install. Feb. W.M., F. N. Kerr; S.W., H. E. Ayers; J.W., T. Wales; Sec., D. E. L. Collett, P.M., Box 34, Lyttelton.

St. Augustine, 4—Founded 1852, meets Masonic Hall, Christchurch, second Tues., 7.30. Install. Mar. W.M., C. J. Jones; S.W., F. J. Tattle; J.W., A. S. Drayton; Sec., J. A. Stables, P.M., Box 363, Christchurch.

Southern Cross, 6—Founded 1858, meets Masonic Hall, Kalapoi, first Thurs., 7.30. Install. Dec. W.M., G. A. Broadley; S.W., J. S. Richards; J.W., A. E. Brown; Sec., T. Hoskin, P.M., High St., Kaiapoi.

Caledonian, 16—Founded 1871, meets Masonic Hall, Sophia St., Timaru, first Mon., 7.30. Install. June. W.M., W. McKinney; S.W., J. Donaldson; J.W., J. Brown; Sec., J. Simpson, P.M., Church St., Timaru.

Progress, 22—Founded 1876, meets Masonic Hall, Southbridge, Tues. on or before full moon, 8. Install. Dec. W.M., J. Hutton; S.W., W. Scott; J.W., W. J. Hampton; Sec., J. S. McClelland, Southbridge.

Canterbury Kil., 23—Founded 1875, meets Masonic Hall, Canterbury St., Lyttelton, third Thurs., 7.30. Install. July. W.M., J. N. Carson; S.W., T. Hempstalk; J.W., B. H. Jones; Sec., E. W. Brown, P.M., Reserve Terrace, Lyttelton.

Geraldine, 27—Founded 1890, meets Masonic Hall, Geraldine, third Wed., 7.30. Install. Mar. W.M., W. E. Moyle; S.W., J. A. Scarff; J.W., J. Gillies; Treas., J. P. Cliff; Sec., W. A. Sherratt, P.M., Geraldine.

Ashley, 28—Founded 1878, meets Masonic Hall, Rangiora, second Thurs., 7.30. Install. Mar. W.M., E. D. Rowe; S.W., R. McIntosh; J.W., A. Cambridge; Sec., W. C. Prosser, Box 12, Rangiora.

St. George, 29—Founded 1880, meets Masonic Hall, Winkin St., Temuka, second Wed., 7.30. Install. Dec. W.M., A. R. Guild; S.W., G. N. Langford; J.W., A. Botting; Sec., J. H. Worboys, Temuka.

Rakaia, 31—Founded 1879, meets Masonic Hall, Rakaia, first Wed., 7.30. Install. April. W.M., A. Doig; S.W., P. B. Shepherd; J.W., C. E. Featherstone; Sec., A. Holmes, Rakaia.

Lincoln, 33—Founded 1880, meets Masonic Hall, Lincoln, first Tues., 7.30. No meeting Jan. Install. Oct. W.M., A. J. R. Smither; S.W., W. Phillips; J.W., J. Mackenzie; Sec., G. O. Templeton, Motukarara.

Concord, 39—Founded 1881, meets Masonic Hall, Papanui, fourth Wed. Install. May. W.M., T. Taylor; S.W., F. H. C. Hehden; J.W., W. J. Trustum; Sec., A. J. Nicholas, P.M., 21 Petrie St., North Richmond, Christchurch.

Phoenix, 43—Founded 1882, meets Masonic Hall, Jolle St., Akaroa, second Fri., 7.30. Install. Sept. W.M., C. Hall; S.W., H. J. Barnham; J.W., T. J. Wakelin; Sec., Rev. A. H. Julius, P.O.C., Smith St., Akaroa.

Methven, 51:—Founded 1884; meets Masonic Hall, Methven, second Wed., 7.30. Install. May. W.M., J. Campbell; S.W., W. T. P. Lock; J.W., A. W. Bremer; Sec., H. H. Pawson, P.M., Box 21, Methven.

Kaikoura, 60:—Founded 1887; meets at Masonic Hall, Kaikoura, Thursday on or before full moon. Install. Feb. W.M., S. T. Harris; S.W., E. W. Flower; J.W., W. F. Perrin; Sec., C. A. Jensen.

Christchurch, 91:—Founded 1898; meets Masonic Hall, Gloucester St., Christchurch, fourth Tues., 7.30. Install. Nov. W.M., H. R. Adams; S.W., H. Clarke; J.W., E. J. Bell; Sec., W. L. N. Newth, 19, Peverell St., Riccarton.

Mackenzie, 93:—Founded 1894; meets Masonic Hall, Fairlie, Thurs. nearest full moon, 8. Install. third Thurs. Oct. W.M., W. A. Robertson; S.W., J. McLean; J.W., B. S. Robertson; Sec., A. Cooper, Fairlie.

St. Augustine, 99:—Founded 1875; meets Masonic Hall, Leonard St., Waimate, second Wed. 7.30. Install. Aug. W.M., S. Maitus; S.W., B. Watkin; J.W., J. Bird; Sec., A. J. Hoskins, P.M., Box 46, Waimate.

Thistle, 113:—Founded 1898; meets Masonic Hall, Havelock St., W., Ashburton, third Wed., 7.30. Install. 30th Nov. W.M., D. M. Jones; S.W., J. Smith; J.W., W. R. Furniss; Sec., F. H. Knight, Box 108, Ashburton.

Cheviot, 124:—Founded 1902; meets Cheviot, Thurs. nearest full moon. Install. — W.M., G. M. Truman; S.W., F. G. Barnes; J.W., A. R. Murray; Sec., L. H. Pruden, Box 46, Cheviot.

Mairaki, 131:—Founded 1908; meets Masonic Hall, Cust, third Fri., Install. April. W.M., E. W. Cooper; S.W., G. Cowen; J.W., G. E. Fergus; Sec., T. B. Lock, Cust.

Paraora, 134:—Founded 1904; meets Masonic Hall, St. Andrew's, Tues. nearest full moon, 7.30. Install. April. W.M., G. Dellow; S.W., J. H. Stowell; J.W., T. Hubbard; Sec., R. J. Pugh, 387 Talbot St., Geraldine.

Crown, 138:—Founded 1882; meets Masonic Hall, Wordsworth St., Sydenham, first Thurs., 7.30. Install. Dec. W.M., J. S. Temple; S.W., S. Baird; J.W., W. J. Edwards; Sec., T. W. Lee, P.M., 88, Barbour St., Linwood, Christchurch.

Robert Burns, 139:—Founded 1877; meets Masonic Temple, Gloucester St., Christchurch, third Tues., 7.30. Install. Aug. W.M., W. W. Newman; S.W., A. Ryland; J.W., A. J. Towns; Sec., R. W. S. Eastwood, P.G.B.B., 39, Hopkins St., Woolston.

Waihora, 141:—Founded 1905; meets Oddfellows' Hall, Leeston, second Thurs., 8 p.m. Install. April. W.M., F. B. Clausen; S.W., R. M. Robertson; J.W., W. Watson; Sec., F. S. Jarman, P.O. Box 11, Leeston.

Civic, 157:—Founded 1908; meets Masonic Hall, Gloucester St., W., Christchurch, first Tues., 7.30. Install. Aug. W.M., D. Crozier; S.W., W. Sherris; J.W., F. G. Clark; Sec., N. S. Lawn, Box 957, Christchurch.

St. Martin, 162:—Founded 1909; meets Masonic Hall, Pleasant Point, fourth Thurs., 7.30. Install. Aug. W.M., A. J. Agnew; S.W., Wm. Blackwood; J.W., P. McPherson; Sec., J. Stewart, P.M., Pleasant Point.

Ahurewa, 181:—Founded 1911; meets Schoolroom, Dunsandel, fourth Thurs. Install. Oct. W.M., J. H. Williams; S.W., F. T. Claydon; J.W., W. Robertson; Sec., F. Lill, P.G.D.C., Box 1, Dunsandel.

Amuri, 184:—Founded 1911; meets Masonic Hall, Rotherham, Amuri, Fri. nearest full moon, 7.30. Install. Oct. W.M., E. Jennings; S.W., W. D. Banks; J.W., W. S. D. Smale; Sec., George Powis, Waiata.

Avon, 185:—Founded 1896; meets Masonic Hall, Gloucester St., Christchurch, first Thurs. Install. Sept. W.M., J. W. Barraclough; S.W., G. E. Billson; J.W., J. Munnings; Sec., B. Falck, P.M., Box 844, Christchurch.

Tawera, 188:—Founded 1912; meets Masonic Hall, Oxford, first Tues., 7.30. Install. March. W.M., W. C. Jamieson; S.W., E. H. Buckridge; J.W., T. L. P. Duckworth; Sec., G. Smith, P.M., Oxford.

Timaru, 196:—Founded 1913; meets St. John's Masonic Hall, Church St., Timaru, third Monday in month (except Dec.). Install. April. W.M., A. L. Taylor; S.W., R. Kilgour; J.W., C. G. Curtis; Sec., J. Scott, Box 89, Timaru.

Koranga, 197:—Founded 1913; meets Masonic Hall, Sophia St., Timaru, fourth Tues., 7.30. Install. Aug. W.M., A. Wotherspoon; S.W., E. Porter; J.W., R. F. Provan; Sec., N. S. Cramond, 269, Olipha Rd., Timaru.

Erewhon, 200:—Founded 1914; meets Masonic Hall, Mt. Somers, Thurs. on or before full moon, 7.30. Install. Oct. W.M., R. Oakley; S.W., E. C. D. Withell; J.W., W. J. S. Hood; Sec., F. W. Giffkins, Box 42, Mt. Somers.

Acacia, 209:—Founded 1918; meets Masonic Hall, Waikari, Mon. on or after full moon, 7.30. Install. Oct. W.M., A. Black; S.W., C. E. Saunderson; J.W., H. W. Saunderson; Sec., D. J. Black, Box 15, Waikari.

Eirene, 211 (Little River).

Ionic, 212:—Founded 1919; meets Masonic Hall, Gloucester St., Christchurch, fourth Thurs., 7.30. Install. Aug. W.M., A. G. Bennett; S.W., M. H. Moyle; J.W., L. Salt; Sec., J. E. Dunstan, P.M., 277, Fitzgerald Av., Christchurch.

Malvern, 230:—Founded 1922; meets Oddfellows' Hall, Glentunnel, third Thurs. May, June, July, and Aug., at 7.30, the remaining year at 8. Install. March. W.M., A. W. Ironside; S.W., R. G. Keith; J.W., E. C. Percival; Sec., S. R. Wright, Box 4, Hororata.

Brighton, 236:—Founded 1922; meets Joyland Building, New Brighton, second Wed., 7.30. Install. July. W.M., F. J. Parson; S.W., A. G. Nicholson; J.W., T. H. Broadbelt; Sec., W. Midgley, P.M., 38, Nelson St., New Brighton.

Summer, 242:—Founded 1922; meets Masonic Hall, Summer, third Mon., 7.30. Install. Sept. W.M., W. H. Nicholson; S.W., E. Stocks; J.W., C. L. Angus; Sec., C. H. Smith, P.M., Neyland St., Summer.

United Forces, 246:—Founded 1922; meets Masonic Hall, Gloucester St., Christchurch, second Wed., 7.30. Install. Sept. W.M., S. C. Bingham; S.W., O. Baker; J.W., J. P. E. Veale; Sec., A. H. Covell, 140, Hereford St., Christchurch.

Southern Star, 256:—Sydenham.

Shirley, 263:—Founded 1924; meets second Tuesday, St. Stephen's School, Hills Rd., St. Albans. Install. May. W.M., C. H. Bursion; S.W., L. B. Bradstock; J.W., H. Cato; Sec., A. C. Wilson, 37 Kinlock St., St. Albans, Christchurch.

PROVINCE OF OTAGO: 34 LODGES.

(R.W., Bro. Wm. Lischner, Prov. G.M.)
Otago 7:—Founded 1860; meets Masonic Hall, Great King St. (opp. Museum), Dunedin, second Wed., 7.30. Install. Oct. W.M., J. H. E. Wilson; S.W., G. G. McKenzie; J.W., C. J. Hayward; Sec., S. F. Bridgman, Green Island.

Waitaki, 11:—Founded 1869; meets Masonic Hall, Wansbeck St., Oamaru, second Wed., 7.30. Install. May. W.M., D. McPhail; S.W., N. C. Gilchrist; J.W., F. Crawshaw; Sec., C. A. La Roche, Harbour Board Office, Oamaru.

Clutha, 14:—Founded 1866; meets Masonic Hall, Douglas St., Balclutha, second Mon., 7.30. Install. Sept. W.M., J. R. Copland; S.W., J. Perkins; J.W., P. Mason; Sec., C. R. Mazengarb, carp. National Bank, Balclutha.

Palmerston, 26:—Founded 1876; meets Masonic Hall, Palmerston S., Fri. on or before full moon, 8. Install. Aug. W.M., J. Lang; S.W., J. Purvis; J.W., W. Webster; Sec., G. B. Smith, P.M., Box 24, Palmerston, Otago.

Hercules, 36:—Founded 1880; meets Masonic Hall, Tapanui, Wed. nearest full moon, 7.30. Install. April. W.M., A. Bradley; S.W., A. Waite; J.W., D. Crossan; Sec., J. W. Nicholson, Box 19, Tapanui.

Hiram, 46:—Founded 1883; meets Masonic Hall, Gargill Rd., South Dunedin, fourth Tues., 7.30. Install. Oct. W.M., A. Logic; S.W., W. S. Gardner; J.W., I. G. Weir; Sec., R. G. V. Parker, P.M., 17, Princes St., St. Kilda.

Ngapara, 68:—Founded 1891; meets Masonic Hall, Ngapara, Mon. on or before full moon, 7.30. Install. Oct. W.M., G. D. Watson; S.W., G. Munro; J.W., W. P. Nimmo; Sec., H. Webber, P.M., Ngapara, Otago.

Oamaru Kil., 82:—Founded 1872; meets Masonic Hall, Oamaru, third Wed., 7.30. Install. Oct. W.M., P. Ledingham; S.W., A. Miller; J.W., A. G. Fischer; Sec., Jas. McLaren, Oamaru.

St. Thomas Kil., 83:—Founded 1881; meets Masonic Hall, Kaitangata, fourth Wed. from 21st May, 1924, 7 p.m. Install. March. W.M., G. Wilson; S.W., C. H. Williams; J.W., W. Ramage; Sec., A. S. McIntosh, Kaitangata.

St. John, 84:—Founded 1885; meets second Thurs., Oddfellows' Hall, Gordon Rd., Mosgiel, 7.30. Install. Nov. W.M., J. K. Neil; S.W., T. T. Crozier; J.W., W. Blackie; Sec., J. Williamson, Box 23, Mosgiel.

Mount Ida, 97:—Founded 1868; meets Masonic Hall, Naseby, Wed. on or after full moon. Install. Feb. W.M., J. I. Frazer; S.W., J. W. Laisley; J.W., L. J. E. Smith; Sec., A. E. Brown, P.M., P.O. Box 13, Naseby.

Cromwell Kil., 98:—Founded 1878; meets Masonic Hall, Cromwell, Wed. nearest full moon, 7.30. Install. Feb. W.M., L. M. Jolly; S.W., W. Lind; J.W., C. W. Johnson; Sec., W. Campbell, P.M., Horace St., Cromwell.

Dunstan, 103:—Founded 1869; meets Masonic Hall, Clyde, Tues. on or nearest full moon, 7.30. Install. Feb. W.M., H. J. Partridge; S.W., W. Sutherland; J.W., R. A. Buchanan; Sec., H. E. Stevens, P.M., Clyde.

Maori, 105:—Founded 1896; meets Masonic Hall, Revenbourne, Dunedin, first Mon., 7.30. Install. Mar. W.M., J. C. Seelye; S.W., G. Green; J.W., G. Trimmell; Sec., A. Jordan, P.M., 91 Albany St., Dunedin.

Manuherikia Kil., 109:—Founded 1896; meets Masonic Hall, Alexandra, Fri. on or nearest full moon, 7.30. Install. Feb. W.M., J. White; S.W., J. R. Marks; J.W., W. H. King; Sec., J. B. Arnott, P.M., Box 51, Alexandra.

St. Bathans, 126:—Founded 1902; meets Masonic Hall, Becks, Thurs. nearest full moon, 8. Install. Feb. W.M., Jas. Sheppard; S.W., C. G. Davies; J.W., W. Johnsen; Sec., Rev. A. V. G. Chandler, P.G.C., Becks, Central Otago.

Otago Kil., 143:—Founded 1865; meets Masonic Hall, Moray Place, Dunedin, first Thurs., 7.30. Install. Dec. W.M., E. Syrett; S.W., E. Sincok; J.W., B. G. Midgley; Sec., E. W. G. H. Watts, P.D.G.M., 71 Clyde St., Dunedin.

Teviot, 148:—Founded 1907; meets Masonic Hall, Roxburgh, Sat. on or nearest full moon, 8. Install. Mar. W.M., W. Toms; S.W., R. Glendinning; J.W., W. S. Craig; Sec., Dr. J. R. Gilmour, P.M., Box 18, Roxburgh.

Oceanic, 154:—Founded 1907; meets St. Kilda Masonic Hall, third Wed., 7.30. Install. Oct. W.M., L. Dickel; S.W., R. M. Mercer; J.W., E. G. E. Price; Sec., A. A. Clatworthy, Box 417, Dunedin.

Haeremai, 155:—Founded 1907; meets Masonic Hall, Great King St. (opp. Museum), Dunedin, third Mon., 7.45. Install. April. W.M., F. E. Newall; S.W., T. Pearce; J.W., G. S. Roberts; Sec., J. D. King, P.M., 2 Dudley Place, Maori Hill, Dunedin.

Masters, 161:—Founded 1909, Dunedin.

Kurov, 164:—Founded 1909; meets Masonic Hall, Kurov, Thurs. on or before full moon, 7.30. Install. Sept. W.M., J. C. Harris; S.W., H. G. Hamner; J.W., F. W. G. Quaife; Sec., W. W. Mercer, care Barclay Bros., Kurov.

Owaka, 180:—Founded 1911; meets Masonic Hall, Owaka, Tues. nearest full moon, 7.30. Install. March. W.M., T. L. Spence; S.W., G. F. A. Sargeant; J.W., E. G. Dale; Sec., J. Logan, P.M., Owaka.

Clinton, 183:—Founded 1911; meets Masonic Hall, Clinton, Thurs. nearest full moon, 7.30. Install. Mar. W.M., A. Murray; S.W., G. K. McKenzie; J.W., F. Waite; Sec., W. T. Dark, P.M., Clinton.

Ionic, 191:—Founded 1912; meets Kirkland Hall, Green Island, second Mon., 7.30. Install. July. W.M., J. Miller; S.W., J. C. Lindsay; J.W., R. J. Short; Sec., S. F. Bridgman, Green Island.

Morning Star, 192:—Founded 1912, Mornington.

Strath-Taieri, 199:—Founded 1914; meets Presbyterian Church Hall, Middlemarch, Mon. on or before full moon. Install. April. W.M., J. Milne; S.W., A. H. Finnie; J.W., J. T. James; Sec., J. Slater, Middlemarch.

Karitane, 221:—Founded 1921; meets Masonic Hall, Waikouaiti, second Mon., 7.30. Install. March. W.M., W. Anderson; S.W., A. Edmenson; J.W., W. Chisholm Lee; Sec., G. L. Swift, Mental Hospital, Sealiff.

Waverley, 226:—Founded 1921; meets in Lodge Room, Anderson's Bay, third Tues., 7.30. Install. Sept. W.M., C. B. Gollop; S.W., J. Anderson; J.W., A. Morrison; Sec., W. J. Davidson, 57 Bird St., St. Kilda, Dunedin.

Taharangi, 235:—Founded 1922; meets Lodge-room, Sim St., Macri Hill, second Tues., 7.30. Install. March. W.M., H. Turner; S.W., R. W. Shrimpton; J.W., J. B. Moss; Sec., J. R. Steven, 2 Chamberlain St., Maori Hill, Dunedin.

The Service, 237:—Founded 1922; meets Masonic Hall, Great King St., Dunedin, second Thurs., 7.30. Install. April. W.M., A. R. Cockerell; S.W., J. R. McKissock; J.W., A. Smith; Sec., W. J. Suters, Grand Hotel Buildings, High St., Dunedin.

Koputai, 239:—Founded 1922; meets Masonic Hall, Port Chalmers, fourth Mon., 7.30. Install. May. W.M., E. H. Cook; S.W., W. H. Sutherland; J.W., F. C. Smith; Sec., W. D. Sutherland, Burns St., Port Chalmers.

St. Clair, 246:—Founded 1922; meets in Lodge room, Albert St., St. Clair, first Wednes., 7.30. Install. Nov. W.M., H. W. Jones; S.W., J. A. Paterson; J.W., W. R. Waters; Sec., J. Seddon, Victoria Rd., St. Clair.

Roslyn, 250:—Founded 1919; meets Linden Hall, Roslyn, fourth Thursday, 7.30. Install. 11th Dec. W.M., G. Hutton; S.W., G. Walkinshaw; J.W., A. L. Smythe; Sec., W. J. Winefield, P.O. Box 395, Dunedin.

PROVINCE OF SOUTHLAND: 19 LODGES.

(R.W. Bro. W. A. Stout, Prov. G.M.)

Southern Cross, No. 9—Founded 1864; meets Masonic Hall, Forth St., Invercargill, first Thurs., 7.30. Install. June. W.M., H. J. Farrant; S.W., W. J. Watson; J.W., E. G. Sherborne; Sec., T. H. Smith, Box 107, Invercargill.

Harvey, 49—Founded 1883, meets Masonic Hall, Gore, third Wed., 7.30. Install. April. W.M., G. B. Paterson; S.W., H. H. Grant; J.W., A. L. Dolamore; Sec., E. Frobarth, P.M., Main St., Gore.

Mokoreta, 63—Founded 1888, meets Masonic Temple, Wyndham, third Thurs., 8. Install. fourth Wed. in Sept. W.M., F. Williams; S.W., G. Clark; J.W., A. T. Ross; Sec., A. W. Crosbie, P.M., Box 48, Wyndham.

Fortitude, 64—Founded 1888; meets Masonic Hall, Bluff, second Wed., 7.30. Install. June. W.M., R. Erasmussen; S.W., G. W. Effe; J.W., R. Richards; Sec., E. Parker, P.M., Hazelwood, Bluff.

Aparima, 77—Founded 1876, meets Masonic Hall, Riverton, fourth Tues. (Dec. third Tues.), 7.30. Install. Aug. W.M., E. B. Patrick; S.W., J. Martin; J.W., G. Kerr; Sec., E. B. Gee, P.M., Riverton.

Lake Lodge of Ophir, 85—Founded 1864, meets Masonic Hall, Queenstown, third Tues. Install. Feb. W.M., O. Overton; S.W., F. McDowall; J.W., A. Simon; Sec., W. D. Warren, P.M., Box 26, Queenstown.

Arrow Kil, 86—Founded 1879; meets Mon. on or before full moon, Masonic Hall, Arrowtown. Install. Feb. W.M., D. R. Rowe; S.W., T. Kinross; J.W., W. Ewart; Sec., S. George, P.M., Box 54, Arrowtown.

St. John, 94—Founded 1877; meets Masonic Hall, Forth St., Invercargill, third Thurs., 7.30. Install. May. W.M., G. H. Curle; S.W., F. C. Pedler; J.W. —; Sec., F. Bonifant, 15 Clifton St., Invercargill.

Taringatura, 100—Founded 1887, meets Masonic Hall, Lumsden, Mon. nearest full moon, 7.30. Install. third Wed. Nov. W.M., F. Gluyas; S.W., A. McAlister; J.W., G. W. Johnson; Sec., J. S. Nelson, Box 61, Lumsden.

Winton, 108—Founded 1896, meets Masonic Hall, Park St., Winton, Tues. on or before full moon, 7.30. Install. Oct. W.M., J. A. Miller; S.W., R. J. Woods; J.W., J. I. Dixon; Sec., T. Walker, P.M., Box 7, Winton.

Wallace, 129—Founded 1904, meets Masonic Hall, Otautau, third Tues., 7.30. Install. Oct. W.M., A. H. Lindsay; S.W., R. H. Walker; J.W., J. C. Millar; Sec., E. Matheson, P.M., Box 10, Otautau.

Orepuki, 137—Founded 1905; meets Masonic Hall, Orepuki, second Thurs., 7.30. Install. third Wed. April. W.M., H. J. Simpson; S.W., F. Mayhew; J.W., Bro. D. McKenzie; Sec., R. W. Rotch, P.M., Box 32, Orepuki.

Wairaki, 145—Founded 1906, meets Masonic Hall, Nightcaps, Fri. on or nearest full moon, 7.30. Install. Mar. W.M., R. Sheddin; S.W., J. Hamilton; J.W., D. Goldie; Sec., J. O. Clapp, Jun., P.M., Box 19, Nightcaps.

Victoria, 147—Founded 1883, meets Masonic Hall, Forth St., Invercargill, second Tues., 7.30. Install. Aug. W.M., H. W. T. Denton; S.W., R. Buchanan; J.W., C. J. McEachran; Sec., N. J. Brokenshire, P.M., Box 95, Invercargill.

Waikaka, 151—Founded 1907, meets Lodge-room, Waikaka, Mon. nearest full moon, 7.30. Install. June. W.M., G. S. Rees; S.W., R. J. Burns; J.W., D. J. Bennetto; Sec., T. Keating, P.M., Box 11, Waikaka.

Mataura, 174—Founded 1910, meets Masonic Hall, Mataura, second Mon., 7.30. Install. second Wed. in July. W.M., R. Brown; S.W., J. H. Park; J.W., J. McDonald; Sec., P. J. De La Mare, P.M., P.O., Mataura.

Waihopa, 189—Founded 1912; meets Masonic Hall, Grey St., Gladstone, Invercargill, third Mon., 7.30. Install. May. W.M., S. C. K. Smith; S.W., W. R. Copland; J.W., J. A. Cushen; Sec., A. B. Edmonds, P.M., Box 188, Invercargill.

Tuatapere, 210—Founded 1919, meets Lodge-room, Tuatapere, Wed. nearest full moon, 7.30. Install. Feb. W.M., R. J. Windelburn; S.W., G. H. Stancombe; J.W., A. Rillstone; Sec., R. Wilson, P.O., Tuatapere.

Switzers, 223—Founded 1821, meets Masonic Hall, Waikaka, first Mon., 7.30. Install. first Wed. in Sept. W.M., W. Christie; S.W., J. M'Kissock; J.W., R. L. Gilmour; Sec., A. J. Cameron, "Ferodale," Wendonside.

ENGLISH CRAFT LODGES.

Southern Star, 735, E.C.—Founded 1853, meets Freemasons' Hall, Collingwood St., on fourth Tues., 7.30 (except Dec.). Install. Oct. W.M., J. S. Walter; S.W., J. T. —; J.W., W. B. Heath; Sec., W. J. S. M., Rocklewen 70, Halifax St., Nelson.

Canterbury, 1048, E.C.—Founded 1864, meets Masonic Hall, Gloucester St., Christchurch, third Thurs., 7.30. Install. Feb. W.M., J. G. MacLachlan; S.W., J. L. Freeman; J.W., W. A. Drake; Sec., G. H. Cooper, P.D.G.W., 15 Bishop St., St. Albans, Christchurch.

Greymouth, 1233, E.C.—Founded 1868, meets Masonic Hall, Greymouth, Tues. on or before full moon, 7.30. Install. July. W.M., L. D. McGlashan; S.W., S. F. Tomlinson; J.W., J. Hayton; Sec., R. A. Barrowman, Box 182, Greymouth.

Pacific, 1453, E.C.—Founded 1873, meets Masonic Hall, Reefton, Tues. nearest full moon, 7.30. Install. July. W.M., H. L. Ching; S.W., J. R. Watt; J.W., W. E. Newton; Sec., A. A. Rouse, P.M., Box 41, Reefton.

Wellington, 1521, E.C.—Founded 1874, meets Masonic Hall, Boulcott St., Wellington, third Wed., except in Jan., Feb. and March. Install. June. W.M., J. M. A. Iott; S.W., E. W. Hunt; J.W., E. K. Kirkaldie; Sec., H. Amos, P.O. Box 1261, Wellington.

Conyers, 1916, E.C.—Founded 1881; meets Masonic Hall, Gloucester St., Christchurch, second Thurs. Install. March. W.M., B. Crowhurst; S.W., W. J. Boon; J.W., L. J. Lewis; Sec., J. Wallace, Box 42, Christchurch.

BOARDS OF INQUIRY.

Marlborough—Meets Masonic Hall, Charles St., Blenheim, first Thurs. Pres., R. P. Furness; Sec., W. C. Lucas, P.M., Redwood St., Blenheim.

New Plymouth—Meets Masonic Hall, first Tues. Pres., R. H. Rockel, P.M.; Sec., R. M. Corney, P.M., Frankleigh Park, New Plymouth.

Wellington—Meets Masonic Hall, Boulcott St., third Tues., except Dec. Pres., E. Smythe; Vice-Pres., A. McL. Wilson; Sec., H. Hobbs, P.M., 544 Adelaide Rd., Berhampore.

North Canterbury—Meets Masonic Hall, Gloucester St., Christchurch, first Mon., 7.30. Pres., S. C. Bingham, P.G.M.; Sec., R. Baldwin, P.M., 72 Ackman's Rd., Christchurch.

South Canterbury—Meets Masonic Hall, Church St., Timaru, third Thurs., 7.30. Pres., W. McBride, Prov. G.M.; Sec., Axel Newton, P.M., 12 Dee St., Timaru.

Otago—Meets No. 15, Empire Buildings, Princes St., Dunedin, second Sat. Pres., J. A. P. Fredric, P.M.; Sec., T. W. O'Driscoll, P.M., 158 Dundas St., Dunedin.

Buller United—Meets Masonic Hall, Westport, fourth Sat., 7. Pres., —, McDonald, P.M.; Sec., J. Rose, Box 90, Westport.

ANCIENT AND ACCEPTED SCOTTISH RITE.

GRAND LODGE OF FRANCE.

Veritas, 384—Founded 1907, meets Freemasons' Hall, Mission St., Papete, fourth Sat., 7.30. Install. Dec. W.M., V. Gooding; S.W., F. Holmes; J.W., C. H. Norris; Sec., A. J. Barbarel. (This Lodge, working in English, cordially invites brethren from New Zealand.)

SUPREME G.R.A. CHAPTER OF NEW ZEALAND.

Having jurisdiction over 49 Active Chapters and 1 Mark Lodge, and having an approximate membership of 3047. Constituted in 1892.

First Grand Principal Z.
M.E. Comp. S. S. Allen, Box 12, Morrinsville.

Past First Grand Principals.
1892—M.E. Comp. E. T. Gillon (deceased).
1893—M.E. Comp. E. T. Gillon (deceased).
1894—M.E. Comp. H. Thomson (deceased).
1895—M.E. Comp. W. R. Scandrett (deceased).
1896—M.E. Comp. Dr. L. G. Boor (deceased).
1897—M.E. Comp. G. H. Powley.
1898—M.E. Comp. G. H. Powley.
1899—M.E. Comp. Rev. T. Porritt.
1900—M.E. Comp. J. M. Brown.
1901—M.E. Comp. H. Wetherill.
1902—M.E. Comp. D. Greig (deceased).
1903—M.E. Comp. W. W. De Castro.
1904—M.E. Comp. Rev. E. E. Chambers (deceased).
1905—M.E. Comp. G. Fowlds.
1906—M.E. Comp. J. Macgregor (deceased).
1907—M.E. Comp. R. Fletcher (deceased).
1908—M.E. Comp. C. J. W. Griffiths (deceased).
1909—M.E. Comp. S. C. Bingham.
1910—M.E. Comp. A. Clothier.
1911—M.E. Comp. J. D. Webster.
1912—M.E. Comp. J. D. Webster.
1913—M.E. Comp. W. Smith.
1914—M.E. Comp. J. J. Esson.
1915—M.E. Comp. A. C. Andrews.
1916—M.E. Comp. T. Ross.
1917—M.E. Comp. M. J. Harris.
1918—M.E. Comp. J. H. Harkness.

1919—M.E. Comp. J. Moncrieff (deceased).
1920—M.E. Comp. T. Hobson.
1921—M.E. Comp. C. Flavell.
1922—M.E. Comp. A. J. Graham.
1923—M.E. Comp. E. Lane.

Honoris Causa:
1897—M.E. Comp. H. J. Williams (deceased).
1908—M.E. Comp. O. Nicholson.
1914—M.E. Comp. M. Niccol.

Grand Chapter Officers.
D.G.Z.—R.E. Comp. G. Russell, Waterloo.
G.H.—R.E. Comp. T. M. Rankin, Southern Cross.
G.J.—R.E. Comp. G. J. Wallace, Timaru.
C.S.E.—R.E. Comp. C. W. Nielsen, Waterloo.
G.S.N.—V.E. Comp. T. W. Lee, St. Augustine.
G.Treas.—R.E. Comp. A. Veitch, Waterloo.
G.Reg.—V.E. Comp. R. H. Webb, Waterloo.
G.Chanc.—V.E. Comp. W. Brown, Waitaki Kil.
1st G. Soj.—V.E. Comp. A. A. Andrewes, Westland Kil.
2nd G. Soj.—V.E. Comp. J. R. Foster, Wanganui.
3rd G. Soj.—V.E. Comp. A. J. Furville, Victoria.
G.Supt. of W.—V.E. Comp. J. Furneaux, Albert Edward.
G.Supt. of W.—V.E. Comp. E. L. S. H. Skilton, Kawatiri.
G.D. of C.—V.E. Comp. R. Tracey-Ingils, Auckland Pro.
G.D. of C.—V.E. Comp. J. L. Ching, Victoria.
G.D. of C.—V.E. Comp. J. W. Elliott, Bedford.
G.D. of C.—V.E. Comp. E. C. Smith, Southern Cross.
G.Swd.B.—V.E. Comp. W. J. Andrews, Piako.
G.Swd.B.—V.E. Comp. J. B. Hird, Heretaunga.
B.Std.B.—V.E. Comp. J. Stone, Manawatu.
G.Std.B.—J. Ritchie, Cromwell Cor.
G. Organist—V.E. Comp. M. A. Cheek, Marlborough.

Grand Superintendents.
Auckland—M.E. Comp. G. T. Bull.
Ruapehu—R.E. Comp. G. G. Bullock.
Hawkes Bay—R.E. Comp. C. H. Critchley.
Wellington—R.E. Comp. S. T. S. Martin.
Canterbury—R.E. Comp. W. M. Hindmarsh.
Westland—M.E. Comp. J. H. Harkness, P.G.Z.
Otago—R.E. Comp. H. W. S. Hellyer.
Southland—R.E. Comp. W. F. Irvine.

Supreme Committee.
Chairman—M.E. Comp. J. J. Esson, P.G.Z.
Elected Members—V.E. Comps. J. Rod, G. F. L. Lenzini, J. MacLachlan, P. C. Watt, J. C. Riddell.
C. W. NIELSEN,
Grand Scribe E.,
Box 236, Wellington.

NEW ZEALAND CHAPTERS.

St. Augustine, 1—Founded 1869, meets Masonic Hall, Gloucester St., Christchurch, second Wed., 7.30. Install. Oct. Z., V.E. Comp. R. W. S. Eastwood; H., E. Comp. A. L. Gray; J., E. Comp. J. Beaman; S.E., Comp. C. S. Johnston, 40 Andover St., Merivale.

Waterloo, 2—Founded 1875, meets Masonic Hall, Boulcott St., Wellington, fourth Wed. Install. Sept. Z., V.E. Comp. W. Berry; H., V.E. Comp. J. McLachlan; J., E. Comp. T. S. Robertson; S.E., V.E. Comp. J. Gordon, P.Z., 17 Hataitai Rd.

Southern Cross, 3—Meets Masonic Hall, Invercargill, first Wed., excluding Dec. Install. Sept. Z., V.E. Comp. R. Winning; H., E. Comp. A. Scott; J., E. Comp. F. Bonifant; S.E., E. Comp. C. B. Gibbs, 31 Nelson St., Invercargill.

Victoria, 4—Founded 1879, meets Masonic Hall, Muoro St., Napier, fourth Tues., except Dec. Install. Sept. Z., V.E. Comp. A. A. Hastings; H., E. Comp. W. M. Lambie; J., E. Comp. W. H. Liggett; S.E., Comp. A. J. Turville, Kennedy Rd., Napier.

Albert Edward, 6—Founded —, meets Masonic Hall, Lyttelton, third Tues. in Sept., Nov., Jan., Mar., May, July, and Aug. Install. Sept. Z., V.E. Comp. C. S. Johnston; H., E. Comp. H. J. Oates; J., E. Comp. F. N. Kerr; S.E., V.E. Comp. T. C. Hatton, P.Z., Oxford St., Box 33, Lyttelton.

Otago, No. 7—Founded —, meets Masonic Hall, St. Kilda, Dunedin, first Sat. Instruction meeting last Sat. Install. Nov. Z., Comp. M. J. Pierce; H., Comp. A. R. Harrison; J., Comp. J. Will; S.E., Comp. T. G. Weir, 30 Goodall St., Caversham, Dunedin.

Waitaki Kil, 8—Founded 1901, meets Masonic Hall, Wansbeck St., Oamaru, fourth Wed. Install. Sept. Z., Comp. J. G. Wallace; H., Comp. S. Mollison; J., Comp. D. A. Bee; S.E., M.E. Comp. J. M. Brown, P.G.Z., Thames St., Oamaru.

Auckland Prov., 9—Founded 1892, meets Masonic Hall, Auckland, third Wed., except Dec. and Jan. Install. Sept. Z., V.E. Comp. A. N. McKelvey; H., E. Comp. F. W. Herbert; J., E. Comp. A. C. Hallett; S.E., E. Comp. J. W. Probert, Box 13, Auckland.

Wairarapa, 10:—Founded 1892, meets Masonic Hall, Masterton, first Thurs., Jan. excepted. Install. Sept. Z., Comp. A. W. Chapman; H., Comp. S. H. Conder; J., Comp. F. W. Temple; S.E., Comp. C. W. Perrin, Queen St., Masterton.

Manawatu, 11:—Founded 1892, meets Masonic Hall, Palmerston North, third Thurs. Install. — Z., V.E. Comp. S. H. Snell; H., E. Comp. E. V. West; J., E. Comp. W. Mundy; S.E., V.E. Comp. J. W. Sinclair, 28 Duke St., Palmerston N.

Victory, 12:—Founded 1892, meets Masonic Hall, Nelson, fourth Thurs. in month as required. Install. Sept. Z., Comp. L. M. Estcourt; H., Comp. C. M. Collins; J., Comp. Bro. R. W. Harrold; S.E., V.E. Comp. R. W. Stiles, Box 105, Nelson.

Marlborough, 14:—Founded 1892, meets Masonic Hall, Charles St., Blenheim, third Thurs. Oct., Dec., Feb., April, June, and Aug. Install. Sept. Z., V.E. Comp. W. J. Girling; H., E. Comp. R. P. Furness; J., E. Comp. H. R. Bagge; S.E., V.E. Comp. C. A. Eckford, Box 34, Blenheim.

Timaru, 15:—Meets Chapter-room, Sophia St., Timaru, first Wed. Install. Sept. Z., Comp. J. T. Hunt; H., Comp. A. G. Horsey; J., Comp. W. G. Cooper; S.E., Comp. G. A. Hastie, 26 Victoria St., Timaru.

Waimate, 16:—Founded 1901, meets St. Augustine's Masonic Hall, Waimate, fourth Wed. Install. Sept. Z., V.E. Comp. W. E. Evans; H., E. Comp. A. J. Jones; J., E. Comp. S. Malthus; S.E., V.E. Comp. J. Meuzies, P.Z., Parsonage Rd., Waimate.

Ohinemuri, 17:—Founded 1901, meets Masonic Hall, Paeroa, first Wed. after full moon in Sept., Oct., Dec., Feb., April, June, Aug. Install. Sept. Z., Comp. J. A. Reid; H., Comp. J. Whitehead; J., Comp. T. Larsen; S.E., Comp. C. B. Gentil, P.Z., P.O. Box 33, Paeroa.

Inangahua, 18:—Founded 1892, meets Masonic Hall, Kelly St., Reefton, second Tues. Install. Sept. Z., Comp. M. Law; H., Comp. J. B. Auld; J., Comp. D. Pankhurst; S.E., Comp. N. M. Rivers, Broadway, Reefton.

Ruapehu, 19:—Founded 1902, meets Masonic Hall, Marton, second Tues. in month, 7.30, except December and January. Install. Sept. Z., Comp. A. C. Drury; H., Comp. R. A. Upchurch; J., Comp. J. W. Gibson; S.E., V.E. Comp. W. R. Snellgrove, P.Z., Box 14, Marton.

Cromwell Coronation, 20:—Founded 1902, meets Masonic Hall, Cromwell, third Thurs. Jan., March, May, July, Sept., Nov. Install. Sept. Z., V.E. Comp. A. M. Brodrick; H., E. Comp. J. Ritchie; J., E. Comp. D. S. Middleton; S.E., V.E. Comp. A. M. Irvine, P.Z., Box 4, Cromwell.

Kawaitiri, 21:—Founded 1904, meets Masonic Hall, Westport, third Wed., except Jan. Install. Sept. Z., V.E. Comp. A. T. Peterkin; H., E. Comp. S. J. Atkinson; J., E. Comp. F. S. Wood; S.E., M.E. Comp. J. H. Harkness, P.G.Z., 85 Queen St., Westport.

Waikato, 22:—Founded 1905, meets Masonic Hall, Hamilton, fourth Tues. Sept., Oct., Dec., Feb., April, June, Aug. Install. Sept. Z., V.E. Comp. C. Speight; H., E. Comp. A. Bullock; J., E. Comp. G. W. Primrose; S.E., E. Comp. J. W. Hodde, care Hannah's, Hamilton.

Wanganui, 23:—Founded 1906, meets Masonic Hall, Wanganui, first Thurs., except Dec. and Jan. Install. Sept. Z., Comp. D. Munro; H., Comp. P. Flavell; J., Comp. W. Veitch; S.E., Comp. C. H. Jacobs, Box 263, Wanganui.

Brooklyn, 24:—Founded 1906, meets Masonic Hall, Brooklyn, second Wednes. Feb., April, June, Aug., Oct., Dec. Install. Sept. Z., V.E. Comp. H. Hanson; H., E. Comp. A. McLaren; J., E. Comp. A. A. George; S.E., V.E. Comp. E. B. Parsons, P.Z., 38 Riddiford St., Wellington South.

Hinemoa, 25:—Founded 1906, meets Masonic Hall, Donald McLean St., third Thurs. Install. Sept. Z., V.E. Comp. C. W. Martin; H., E. Comp. E. Vine; J., E. Comp. A. Roberts; S.E., V.E. Comp. J. W. Sexton, 134 Daniel St., Wellington.

Whangarei, 27:—Founded 1907, meets Masonic Hall, Waitea St., Whangarei, last Fri. (excepting Dec. and Jan.). Install. Oct. Z., Comp. W. J. Dawson; H., Comp. C. B. Kerr; J., Comp. J. W. B. Kerr; S.E., Comp. A. E. Brown, Box 22, Whangarei.

Maori, 28:—Founded 1907, meets Masonic Hall, Ravensbourne, fourth Wednes. in month, except Dec. Install. Oct. Z., V.E. Comp. G. F. Smith; H., E. Comp. G. Winter; J., E. Comp. J. W. Hutton; S.E., Comp. J. Robb, Union St., Ravensbourne.

Westland Kill, 29 (Hokitika).

Rawhiti, 30:—Founded 1908, meets Masonic Hall, Dannevirke, first Mon., 7.30. Install. Sept. Z., Comp. G. Harris; H., Comp. W. Beedie; J., Comp. C. J. Hansard; S.E., Comp. W. Dobson, P.Z., Box 69, Dannevirke.

Prince of Wales, 31:—Founded 1895, meets Masonic Hall, Gloucester St., Christchurch, third Wednes. Feb., April, June, Aug., Oct., Dec. Install. Aug. Z., Comp. W. E. Scott; H., Comp. R. Hyman; J., Comp. B. Falck; S.E., Comp. S. C. Bingham, jun., Box 17, Christchurch.

Takahoa, 32:—Founded 1912, meets Masonic Temple, Eltham and Hawera, alternately, fourth Thurs., 7.30, except Dec. and Jan. Install. Sept. Z., V.E. Comp. E. E. Carter; H., E. Comp. N. E. Drayton; J., E. Comp. R. H. Free; S.E., E. Comp. A. M. Burrows, Collingwood St., Eltham.

Iwikatea, 33:—Founded 1912, meets Masonic Hall, Douglas St., Balclutha, last Mon. Install. Nov. Z., V.E. Comp. R. Henderson; H., Ex. Comp. S. V. White; J., Ex. Comp. A. Cohen; S.E., Ex. Comp. G. J. Downes, Balclutha.

Wallace, 34:—Founded 1913, meets Masonic Hall, Otautau, fourth Thurs. Jan., Mar., May, July, Sept., and Nov. Install. Oct. Z., Comp. G. E. Charlton; H., Comp. C. G. G. Sinclair; J., Comp. W. Excell; S.E., Comp. G. H. Stevens, Box 23, Otautau.

Rose and Thistle Chapter, 35:—Founded 1914, meets in Masonic Hall, Ashburton, fourth Sat. Jan., March, May, July, Sept., and Nov. Install. Sept. Z., V.E. Comp. W. H. Woods; H., E. Comp. E. H. Orr; J., E. Comp. A. Lane; S.E., V.E. Comp. J. H. Harle, P.G. Soj., 181 Burnett St., Ashburton.

Gisborne, 36:—Founded —, meets Abercorn Hall, fourth Tues. Feb., April, June, Aug., Sept., Oct., and Dec. Install. Sept. Z., V.E. Comp. C. Matthews; H., E. Comp. G. R. Grant; J., E. Comp. E. A. Muir; S.E., R.E. Comp. G. T. Bull, P.Z., Box 208, Gisborne.

Egmont, 37:—Founded 1915, meets Masonic Hall, Stratford and Inglewood alternately, 7.30, first Mon., except Dec. and Jan. Z., V.E. Comp. W. McInnes; H., E. Comp. R. F. Harkness; J., E. Comp. G. P. Harkness; S.E., E. Comp. E. Carryer, Box 99, Stratford.

Heretaunga, 38:—Founded 1915, meets Masonic Hall, Hastings, first Thurs., 8. Install. April, Z., Comp. J. E. Jones; H., Comp. A. W. Hamilton; J., Comp. C. S. Palmer; S.E., Comp. R. Shaw, 604 Nelson St., Hastings.

Bedford, 39:—Founded 1916, meets Masonic Hall, Waipukurau, fourth Thurs., 7.30. Install. Sept. Z., Comp. P. J. Ryan; H., Comp. R. J. Pellow; J., Comp. E. E. Bott; S.E., Comp. W. H. L. Williams, Box 115, Waipukurau.

Paritutu, 40:—Founded 1920, meets Masonic Hall, Robe St., New Plymouth, first Wed., except Jan. and Feb. Install. Oct. Z., V.E. Comp. R. N. Renaud; H., E. Comp. A. W. Stevens; J., E. Comp. L. C. Sladden; S.E., E. Comp. A. Nisbet Smith, Box 59, New Plymouth.

Hutt Valley, 41:—Founded 1921, meets Masonic Hall, Lower Hutt, fourth Tues., except Dec. Install. March. Z., V.E. Comp. T. Mather; H., E. Comp. A. Carver; J., E. Comp. A. Burgess; S.E., Comp. E. P. Campbell, National Bank, Grey St., Wellington.

Celtic, 42:—Founded —, meets Masonic Hall, King Street, Dunedin, first Tues., Feb., Mar., April, May, June, July, Aug., Sept., Oct., Nov., Dec. Install. June. Z., V.E. Comp. J. A. Sparrow; H., E. Comp. H. F. Dencker; J., E. Comp. R. H. Bagshaw; S.E., Comp. R. Stephen, Duke's Buildings, Cargill's Corner, Dunedin.

Otaihape, 43:—Founded —, meets Masonic Hall, Taihape, first Mon. alternative months. Install. Oct. Z., V.E. Comp. J. G. Oldham, P.Z.; H., Comp. L. B. H. de Lautour; J., Comp. P. E. Wakeman; S.E., Comp. A. Leighton, 83 Hautapu St.

Rotorua, 44:—Founded 1921, meets Masonic Hall, Rotorua, first Thurs. Jan., Mar., May, July, Sept., and Nov. Install. Nov. Z., V.E. Comp. A. H. J. Brackebush; H., E. Comp. W. T. Pakes; J., E. Comp. G. H. French; S.E., E. Comp. Geo. Urquhart, Box 52, Rotorua.

Ashley, 45:—Founded 1921, meets Masonic Hall, Rangiora, fourth Thurs. Install. Nov. Z., V.E. Comp. C. Dash; H., E. Comp. G. Harlow; J., E. Comp. A. Orton; S.E., E. Comp. A. Shankland, Box 47, Rangiora.

Palmerston-Karitane, 46:—Founded 1922, meets alternately Masonic Hall, Waikouaiti and Palmerston. Install. Aug. Z., V.E. Comp. W. R. McKenzie; H., E. Comp. W. Anderson; J., E. Comp. J. McGill; S.E., E. Comp. G. L. Swift, Mental Hospital, Seaciff.

Huiroa, 47:—Founded 1922, meets Masonic Hall, Gore, second Tues., except Dec. and Jan. Install. Aug. Z., V.E. Comp. W. Gee; H., E. Comp. F. Young; J., E. Comp. J. C. Ray; S.E., E. Comp. R. P. Boyne, Box 90, Gore.

Piako, 48:—Founded 1922, meets Masonic Hall, Morrinsville, Mon. on or nearest full moon, Sept., Oct., Dec., Feb., April, June, and Aug. Install. Sept. Z., V.E. Comp. N. D. Clifford; H., E. Comp. R. J. McCausland; J., E. Comp. F. A. Pickett; S.E., E. Comp. R. B. Morton, Box 12, Morrinsville.

Oroua, 49:—Founded 1922, meets Masonic Hall, Feilding, first Mon. except Jan. Install. Oct. Z., V.E. Comp. W. Quyle; J., E. Comp. H. J. T. Jaggard; H., E. Comp. H. Sims; S.E., E. Comp. H. G. Shakes, Box 103, Feilding.

Waimarino, 50:—Meets Masonic Hall, Raetihi, Wed. after full moon. Install. Dec. Z., V.E. Comp. C. Illingworth; H., E. Comp. M. J. Johansen; J., E. Comp. R. M. Tinsley; S.E., E. Comp. W. H. Sandford, Duncan St., Raetihi.

Russell, 51:—Founded 1923, meets Masonic Temple, Donald McLean St., Wellington S. (Tel. 25-123), second Mon. Install. — Z., V.E. Comp. Evans Jackson; H., E. Comp. R. H. Wilson; J., E. Comp. P. E. Reid; S.E., E. Comp. G. E. Fowles, 110 Riddiford St., Wellington.

Rangitoto, 52:—Founded 1923, meets Masonic Hall, Devonport, first Wed. Install. Sept. Z., V.E. Comp. W. G. Allen; H., Ex. Comp. F. H. Hounsell; J., Ex. Comp. D. G. Thornton; S.E., Ex. Comp. Albert W. Clark, 91 Queen St., Auckland.

Te Marama, 54:—Founded 31st March, 1924, meets in Masonic Temple, Ngaruawahia, third Monday. Install. Mar. Z., V.E. Comp. H. M. Thoepe, P.Z.; H., Comp. R. Brown; J., Comp. W. Hyde; S.E., Comp. G. E. Hall, Horothu.

**ROSE CROIX OF H.R.D.M.
A. and A. Rite.**

Inspector-General for New Zealand—V.III. C. Dillworth Fox, 33deg.

Southern Cross, 88 (Auckland).

Wellington, 91:—Meets Masonic Hall, Boucott St., Wellington, third Fri. Jan., April, July, and Oct., or as near these dates as possible. Install. — M.W.S., E. and P. J. J. Esson; High Prelate, E. and P. Rev. J. H. Sykes; Recorder, E. and P. G. E. Smith, P.M.W.S., Box 811, Wellington.

Latham Chapter, 93:—Meets Masonic Hall, Wanganui, first Mon. April, May, Oct., Nov., and Dec. Install. Nov. M.W.S., III. E. E. Porritt; Prelate, L. Craig; Recorder, John Ashwell, P.M.W.S., Box 126, Wanganui.

Beckett, 185 (Christchurch).

Hawkes Bay, 199:—Meets Masonic Hall, Hastings, third Wed. March, June, Sept., and Dec., or as near those dates as possible. Install. Dec. M.W.S., E. and P. A. W. Hamilton; Prelate, E. and P. Rev. T. Fisher; Recorder, E. and P. J. J. Pickett, 410 Southampton St., Hastings.

Marlborough, 206:—Founded 1920, meets Masonic Hall, Charles St., Blenheim, first Tues. Feb., May, Sept. (Install.), and Nov., or as near those dates as possible. M.W.S., E. and P. C. A. Eckford; Prelate, E. and P. Ven. Archdeacon G. W. York; Recorder, E. and P. W. E. Redman, P.M.W.S., Spring Creek, Blenheim.

Tararua, 219:—Founded 1921, meets Masonic Hall, Masterton, third Wed. Aug., Nov., Feb., and May. M.W.S., E. and P. O. N. C. Pragnell; Prelate, E. and P. Rev. W. Bullock; Recorder, E. and P. S. H. Condon, 83 South Rd., Masterton.

Nelson Provincial, 221:—Founded 1921, meets Masonic Hall, Nelson, fourth Tues. Dec., Mar., July, Sept. (Install.). M.W.S., H. A. Hobbs; Prelate, J. L. Ching; Recorder, A. G. Shrimpton, Box 14, Nelson.

Marama, 224:—Founded 1921, meets Masonic Hall, Church St., Palmerston N., second Tues. in March, June, Sept. and Dec. (Install.). M.W.S., E. and P. A. J. Graham; High Prelate, E. and P. J. C. Abbott; Recorder, E. and P. Bro. C. D. Fraser, Box 94, Palmerston North.

Hinemoa, 228:—Founded —, meets Masonic Hall, Donald McLean St., Newtown, fourth Fri. Mar., June, Sept., and Dec. Install. Dec. M.W.S., E. and P. S. T. S. Martin; High Prelate, E. and P. R. H. Wilson; Recorder, E. and P. Evans Jackson, Box 566, Wellington.

A. AND A. S. RITE.

Inspector-General for New Zealand: III Colonel Geo. Barclay, 33deg.

Sphinx, 23, S.C.:—Founded 1878; meets Masonic Hall, Moray Place, Dunedin, third Mon. March, June, Sept. and Dec. Install. Shrove Tues. M.W.S., E. and P. A. C. McKillop; H.P., R. McIndoe, P.M.W.S.; Sec., E. and P. W. A. Russell, 629 George St., Dunedin.

Zealandia, 30, S.C.—Founded 1914; meets Masonic Hall, Gloucester St., Christchurch, first Wed., Jan., April, July and Oct. Install. Shrove Tues. M.W.S., E. and P. J. A. Pinsep; H.P., E. and P. R. Barnes; S.W., E. and P. F. S. Palmer; J.W., E. and P. R. S. Draper; Treas., E. and P. T. C. W. Pugh; Sec., E. and P. J. W. Roberts, 31, Stevens St., Sydenham.

Nelson, 35 (Nelson).

Murihiku, 36—Founded 1919; meets Masonic Hall, FORTH ST., Invercargill, four times a year (fifth Friday). Special meets as arranged. Install. Shrove Tues. M.W.S., E. and P. A. Scott; High Prelate, E. and P. F. A. Steans; S.W., E. and P. W. F. Irvine; J.W., E. and P. E. McK. Lyon; Sec. E. and P. Sydney Smith, 14 Mitchell St., Invercargill.

Waikato, 37—Founded —; meets Masonic Hall, Hamilton East, third Mon. Feb., May, Aug. and Nov. Install. Shrove Tues. W.M.S., E. and P. Bro. S. B. Sims; D.M.W.S., E. and P. J. Baillie; High Prelate, E. and P. H. N. Forsythe; Sec., E. and P. J. W. Hodde, care Hannah's, Hamilton.

Rose and Thistle, 41 (Gisborne).

Aorangi, — (Timaru).

Mawheranui, — (Greymouth).

KNIGHTS TEMPLAR.

Great Priory of Scotland of the Religious and Military Order of the Temple.

District Grand Prior of New Zealand, V. Eminent Sir Kt. George Barclay, K.G.C.T.

District Grand Secretary, Eminent Sir Kt. Evans Jackson, P.P., Box 566, Wellington.

District Grand Seneschal, S. C. Bingham, K.C.T., P.P.; District Grand Sub-Prior, H. O. Carter, K.C.T., P.P.; District Grand

Constable, George Russell, K.C.T., P.P.; District Grand Treasurer, A. L. Gray, P.P.

Otago Preceptory—Founded —; meets Masonic Hall, Moray Pl., Dunedin, third Mon., Feb., May, Aug., and Nov. Preceptor, Sir Kt. John Will; Past Preceptor Sir Kt. Thos. Ross; Treas., Sir Kt. H. O. Carter, K.C.T.; Sec., Sir Kt. Thos. M. Gillies, P.P., Box 123, Dunedin.

Wellington Preceptory—Founded —; meets Masonic Temple Donald McLean St., Wellington South, fourth Thurs. Dec., March, June, and Sept. (install. meeting). Preceptor, Venerable Sir Kt. S. T. S. Martin; Sub-Preceptor, Sir Kt. James Rod; Treas. Eminent Sir Kt. Evans Jackson, P.P., Sec., Sir Kt. E. J. Guinness, Hautana Square, Lower Hut.

De Molay Preceptory and Priory—Founded 1921; meets quarterly alternately at Auckland and Hamilton, June, Sept. (install.), Dec., and March. Preceptor and Prior, Venerable Sir

Kt. D. B. Wallace; Sub-Preceptor, Sir Kt. C. H. Jenkins; Sec. and Registrar, Sir Kt. V. H. Potter, 533, Mt. Eden Rd., Auckland.

St. Augustine Preceptory and Priory, Christchurch—Founded 1921; meets Nov., Feb., May, and Aug. (Install. Meeting). Preceptor, Eminent Sir Kt. R. W. S. Eastwood; Sub-Preceptor, Sir Kt. James Gillanders; Treas. and Sec., Eminent Sir Kt. J. C. Bingham, K.C.T., P.P., Christchurch.

ROYAL ORDER OF SCOTLAND.

New Zealand Provincial Grand Lodge.

Meets four times per year in different parts of New Zealand. Prov. G.M., R.W. S. C. Bingham, Christchurch; Dep. G.M., R.W. Thos. Ross, Dunedin; P.S.G.W., R.W. George Russell, Wellington; P.J.G.W., R.W. E. McK. Lyon, Invercargill; P.G. Sec., A. L. Gray, P.M., Box 877, Christchurch.

ORDER OF THE SECRET MONITOR.

Representatives Grand Council: V.W. G. Barclay, P.G.B.B., P.S.R., G.R.; V.W. A. L. Gray, P.S.R., P.G.B.B., G.R.

Aotearoa Conclave, 44—Meets four times a year, Masonic Hall, Boulcott St., Wellington. S.R.N., G. Russell; I.P.S.R., J. W. Bright; G.S., C. J. S. Martin; G., W. B. Reesby; Sec., J. A. Laing, 32, Overtoun Terrace, Hataitai, Wellington.

The Bristol Piano Co. Ltd.

By far the Largest Importers of British Pianos in the Dominion.

ENGLAND'S GREATEST PIANOS:

John Broadwood & Sons

Wm. Sames

Walter Collinson

Collard & Collard

BABY GRANDS and PLAYER PIANOS a Specialty
GRAMOPHONES—All sizes and prices; including the famous—

His Master's Voice

Metronola

Columbia

PRICES AND TERMS TO SUIT ALL. WE INVITE INQUIRY.

Sheet and Book Music, Small Instruments, Strings, Reeds, Player Rolls, everything for every musician and lover of music can be obtained from

The Bristol Piano Company Ltd.
WELLINGTON.

M. J. BROOKES, North Island Manager.

A. M. P.

Australian Mutual Provident Society.

Funds, £52,278,099.

Bonuses for one year (1923) £3,350,000
Cash value of these £1,967,456

All surplus allotted to Policy-holders annually. No share-holders.

Largest Mutual Society in the Empire.

All kinds of tables. Write for particulars.

FORSYTH (Walter) & HYDE (Arthur), Napier,
Representatives for Hawkes Bay.

H. GLOVER

MONUMENTAL and GENERAL MASON

**59 KENT TERRACE,
WELLINGTON.**

REINFORCED CONCRETE WALLS.

GRANITE AND MARBLE KERBS.

MARBLE STAIR CASES.

STEPS AND SHOP WINDOWS FITTED.

STALLBOARDS, Etc., Etc.

'Phone 21-788

Masonic Regalia Manufacturers

M.M. Aprons always in stock, best quality 42/-

Royal Arch Sets always in stock, best quality 65/-

Estimates given for Officers' Collars, Jewels, Gaunlets, Aprons, etc. We stock only the best quality materials. Repairs and Renovations a Specialty.

If you want to save money, try our tailor for Dress Suits, Dinner Jackets, etc. The utmost satisfaction guaranteed.

GEORGE & GEORGE Family Drapers, House Furnishers
161-163 Cuba St., Wellington